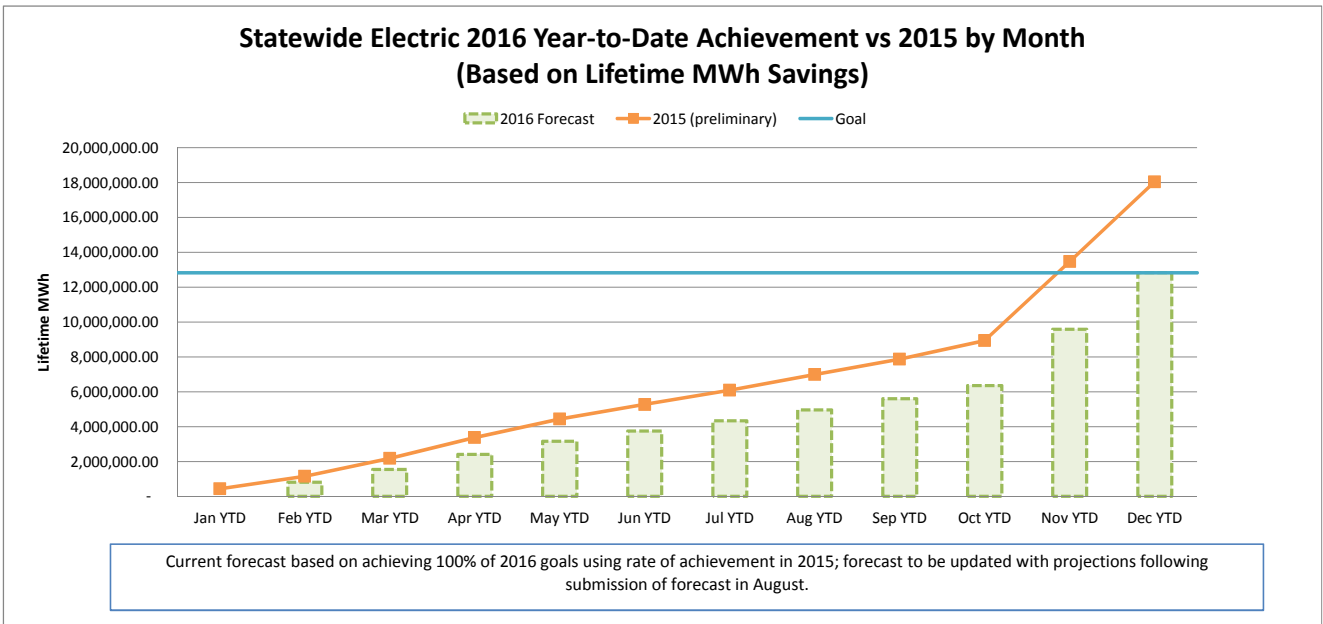
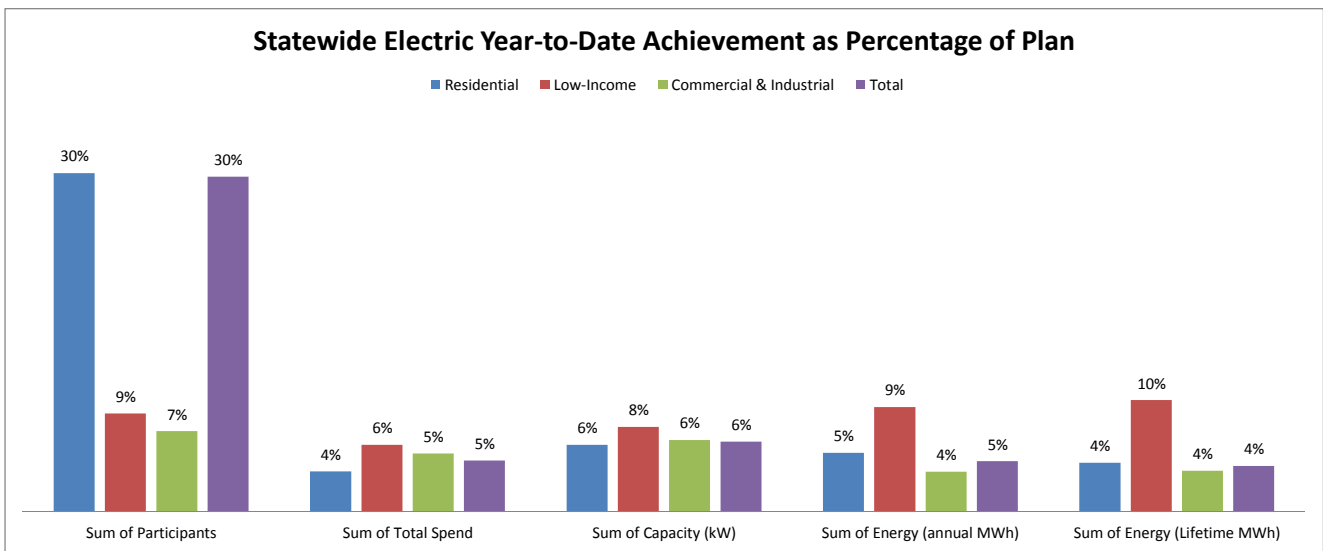


## MARCH 2016 STATEWIDE ELECTRIC DATA DASHBOARD - FROM JAN 1, 2016 THROUGH JAN 31, 2016

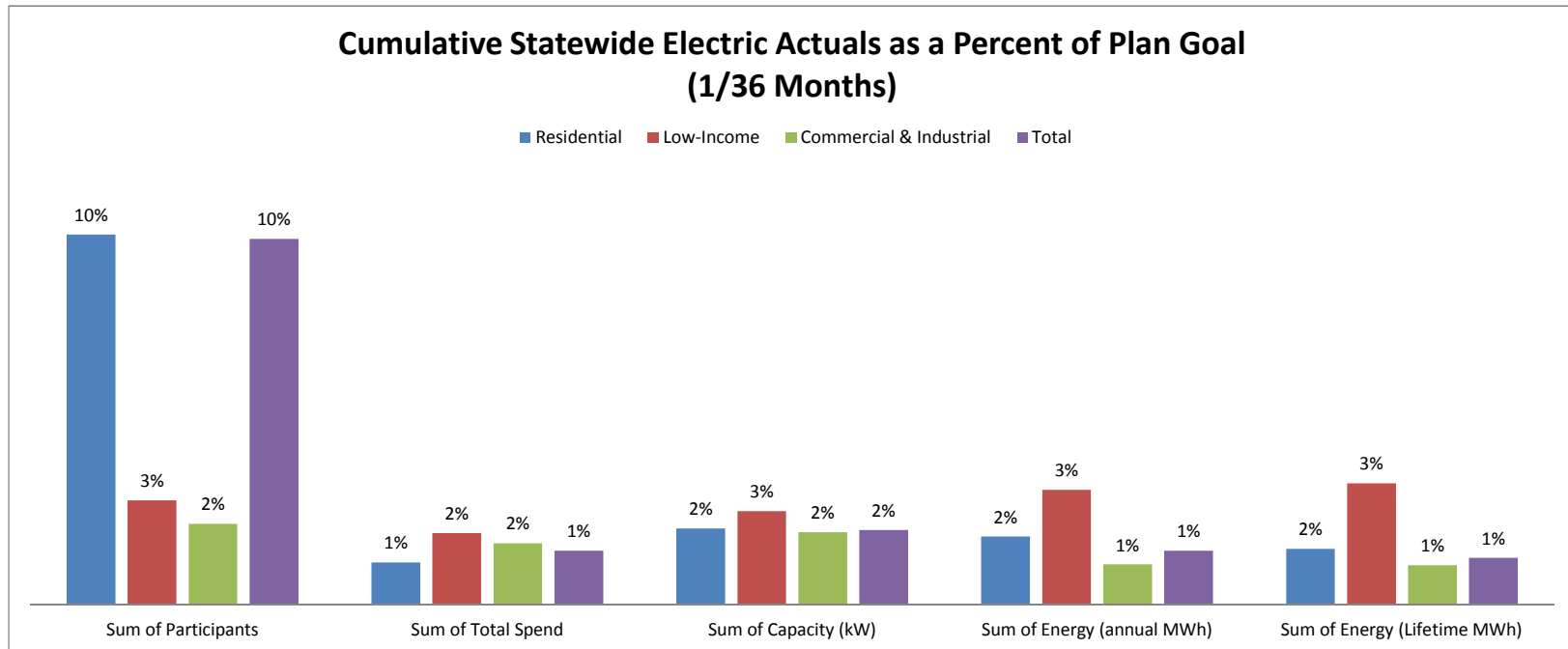
Row Labels	Values				
	Sum of Participants	Sum of Total Spend	Sum of Capacity (kW)	Sum of Energy (annual MWh)	Sum of Energy (Lifetime MWh)
<b>Electric</b>					
<b>Goal</b>	<b>3,750,058</b>	<b>\$ 599,092,724</b>	<b>192,033</b>	<b>1,372,871</b>	<b>12,834,066</b>
Residential	3,695,475	262,032,395	83,864	627,510	4,695,770
Low-Income	31,829	67,636,035	4,847	40,560	354,191
Commercial & Industrial	22,754	269,424,294	103,322	704,801	7,784,105
<b>Jan YTD</b>	<b>1,116,466</b>	<b>27,462,941</b>	<b>11,972</b>	<b>61,821</b>	<b>526,085</b>
Residential	1,112,043	9,410,850	5,001	32,906	205,943
Low-Income	2,788	4,042,457	366	3,781	35,205
Commercial & Industrial	1,635	14,009,633	6,605	25,135	284,937
<b>YTD as % of goal</b>	<b>30%</b>	<b>5%</b>	<b>6%</b>	<b>5%</b>	<b>4%</b>
Residential	30%	4%	6%	5%	4%
Low-Income	9%	6%	8%	9%	10%
Commercial & Industrial	7%	5%	6%	4%	4%



*CLC is not reporting savings or costs for January while it completes the transition to new database operations this month. Any January savings or costs will be included in CLC's monthly reporting for February.*

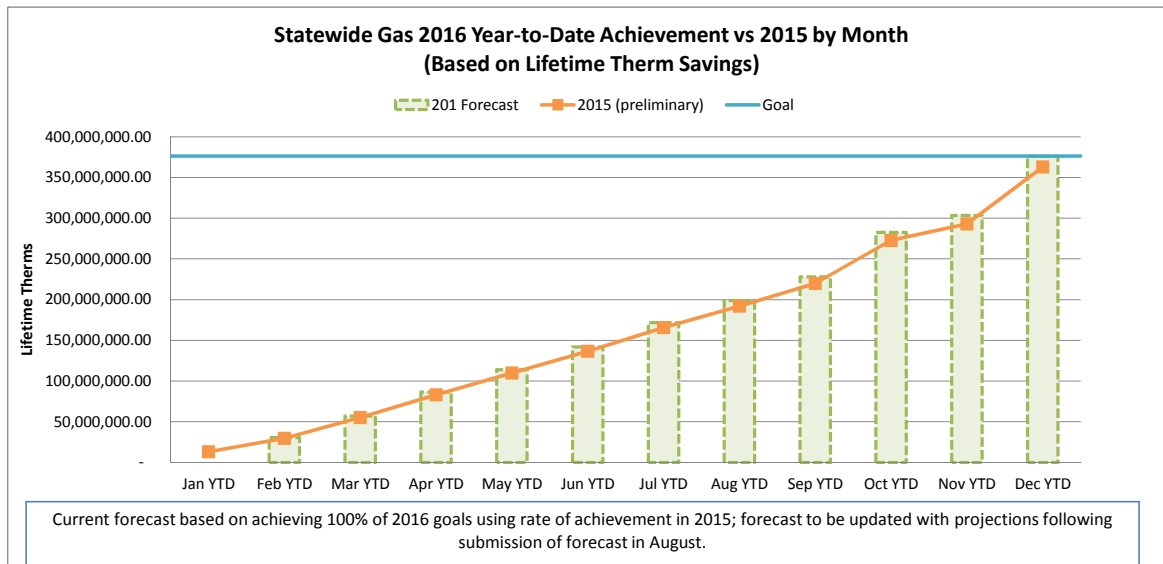
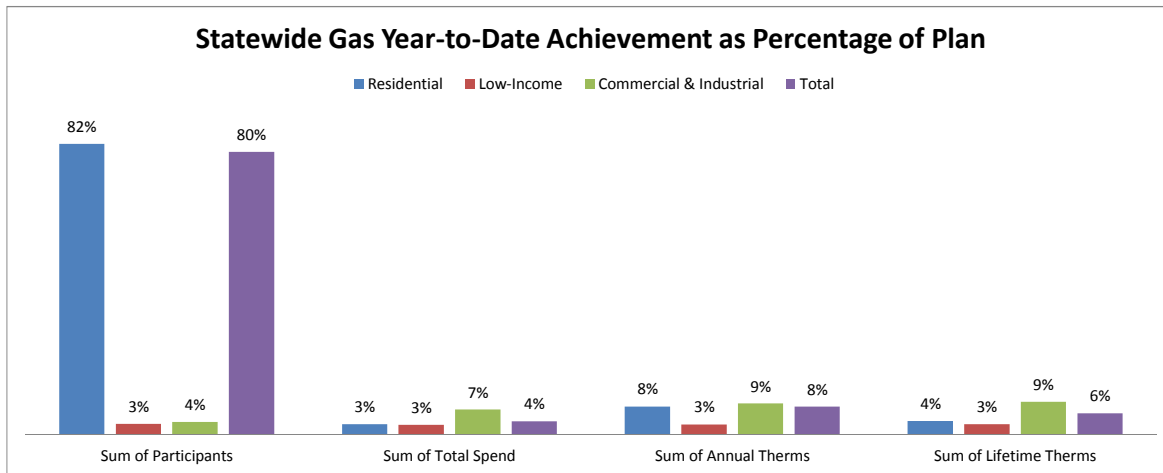
## CUMULATIVE STATEWIDE ELECTRIC DATA DASHBOARD - FROM JAN 1, 2016 THROUGH JAN 31, 2016 (1/36 MONTHS)

Row Labels	Values				
	Sum of Participants	Sum of Total Spend	Sum of Capacity (kW)	Sum of Energy (annual MWh)	Sum of Energy (Lifetime MWh)
<b>Electric</b>					
<b>Goal</b>	<b>10,905,877</b>	<b>\$ 1,834,538,576</b>	<b>577,296</b>	<b>4,122,145</b>	<b>40,483,538</b>
Residential	10,737,170	\$ 807,804,353	236,134	1,740,656	13,323,450
Low-Income	95,967	\$ 203,573,751	14,079	117,973	1,039,872
Commercial & Industrial	72,740	\$ 823,160,472	327,083	2,263,516	26,120,216
<b>Jan YTD</b>	<b>1,116,466</b>	<b>27,462,941</b>	<b>11,972</b>	<b>61,821</b>	<b>526,085</b>
Residential	1,112,043	9,410,850	5,001	32,906	205,943
Low-Income	2,788	4,042,457	366	3,781	35,205
Commercial & Industrial	1,635	14,009,633	6,605	25,135	284,937
<b>YTD as % of goal</b>	<b>10%</b>	<b>1%</b>	<b>2%</b>	<b>1%</b>	<b>1%</b>
Residential	10%	1%	2%	2%	2%
Low-Income	3%	2%	3%	3%	3%
Commercial & Industrial	2%	2%	2%	1%	1%



## MARCH 2016 STATEWIDE GAS DATA DASHBOARD - FROM JAN 1, 2016 THROUGH JAN 31, 2016

Row Labels	Values			
	Sum of Participants	Sum of Total Spend	Sum of Annual Therms	Sum of Lifetime Therms
<b>Gas</b>				
<b>Goal</b>	<b>587,136</b>	<b>\$ 217,209,003</b>	<b>28,094,852</b>	<b>376,308,951</b>
Residential	570,157	\$ 128,442,097	15,104,655	179,262,960
Low-Income	10,696	\$ 44,617,918	2,054,910	40,776,120
Commercial & Industrial	6,283	\$ 44,148,988	10,935,287	156,269,871
Jan YTD	470,694	8,137,440	2,229,108	22,655,462
Residential	470,143	3,764,024	1,203,554	6,959,577
Low-Income	324	1,233,944	59,398	1,192,044
Commercial & Industrial	227	3,139,472	966,155	14,503,841
<b>YTD as % of goal</b>	<b>80%</b>	<b>4%</b>	<b>8%</b>	<b>6%</b>
Residential	82%	3%	8%	4%
Low-Income	3%	3%	3%	3%
Commercial & Industrial	4%	7%	9%	9%



# CUMULATIVE STATEWIDE GAS DATA DASHBOARD - FROM JAN 1, 2016 THROUGH JAN 31, 2016 (1/36 MONTHS )

Row Labels	Values			
	Sum of Participants	Sum of Total Spend	Sum of Annual Therms	Sum of Lifetime Therms
<b>Gas</b>				
<b>Goal</b>	<b>1,761,720</b>	<b>\$ 666,852,036</b>	<b>85,809,615</b>	<b>1,149,211,385</b>
Residential	1,709,969	\$ 395,557,580	45,811,091	549,588,367
Low-Income	32,276	\$ 135,400,869	6,192,804	122,879,252
Commercial & Industrial	19,475	\$ 135,893,587	33,805,720	476,743,766
Jan YTD	470,694	8,137,440	2,229,108	22,655,462
Residential	470,143	3,764,024	1,203,554	6,959,577
Low-Income	324	1,233,944	59,398	1,192,044
Commercial & Industrial	227	3,139,472	966,155	14,503,841
<b>YTD as % of goal</b>	<b>27%</b>	<b>1%</b>	<b>3%</b>	<b>2%</b>
Residential	27%	1%	3%	1%
Low-Income	1%	1%	1%	1%
Commercial & Industrial	1%	2%	3%	3%

