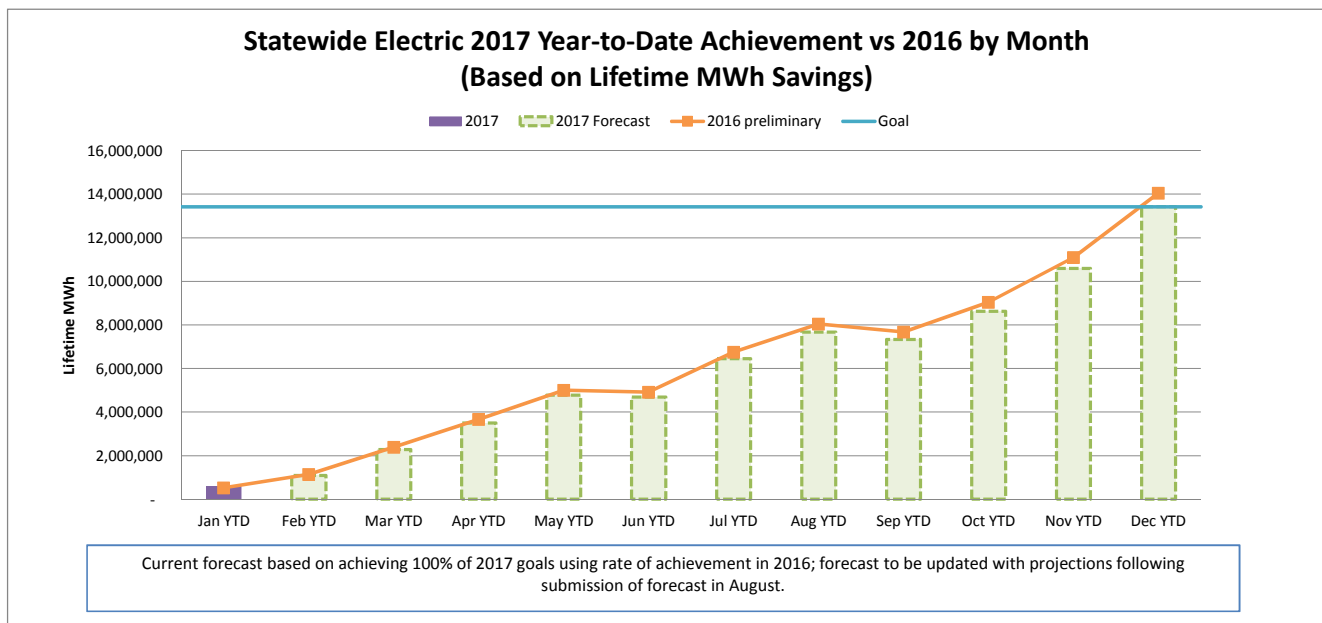
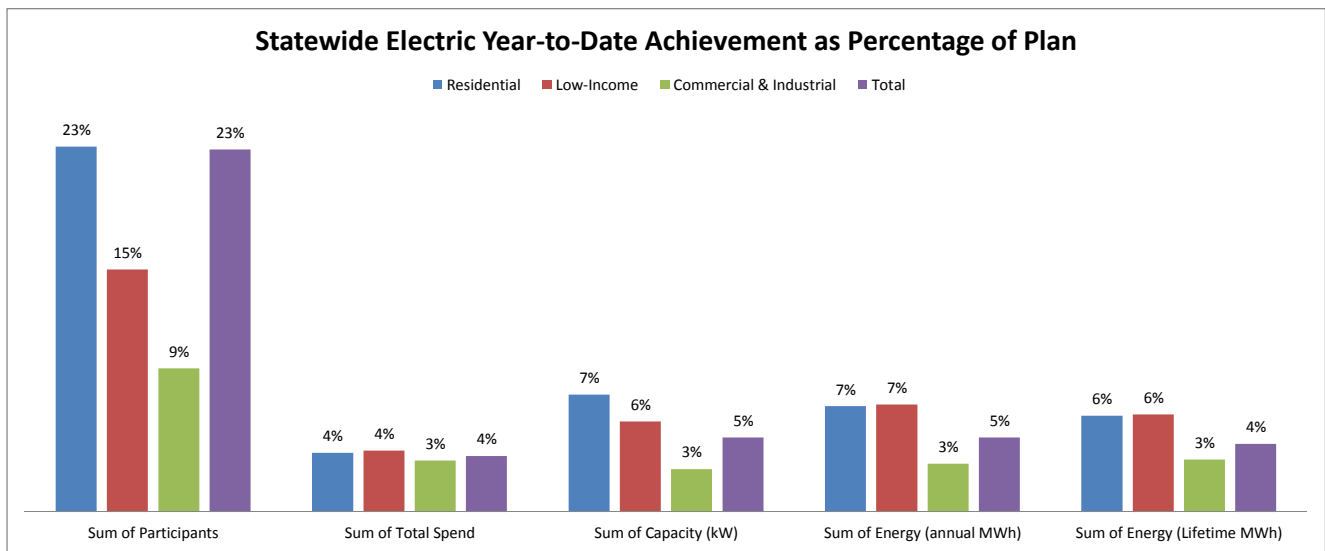


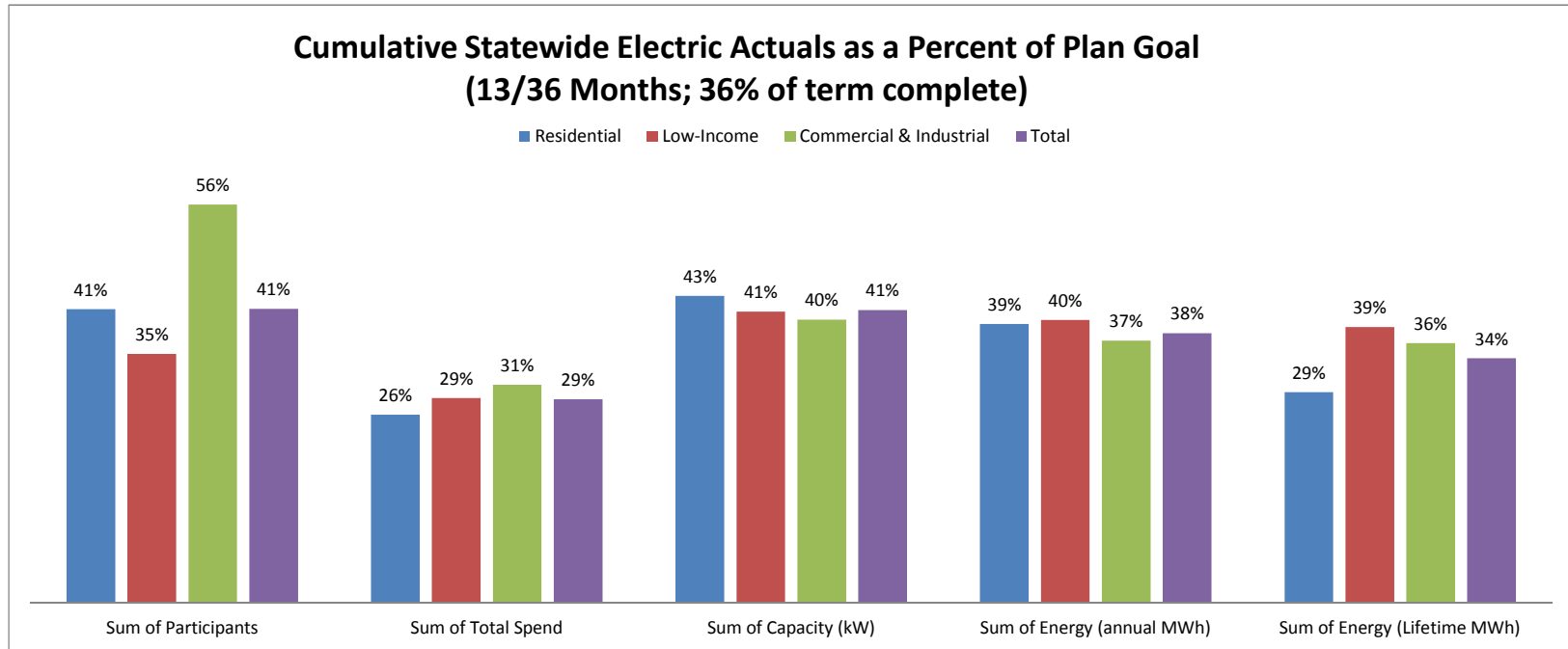
## MARCH 2017 STATEWIDE ELECTRIC DATA DASHBOARD - FROM JAN 1, 2017 THROUGH JAN 31, 2017

Row Labels	Values				
	Sum of Participants	Sum of Total Spend	Sum of Capacity (kW)	Sum of Energy (annual MWh)	Sum of Energy (Lifetime MWh)
<b>Electric</b>					
<b>Goal</b>	<b>3,650,544</b>	<b>\$ 621,237,929</b>	<b>192,937</b>	<b>1,374,065</b>	<b>13,421,472</b>
Residential	3,593,671	270,393,188	79,313	584,087	4,475,067
Low-Income	31,989	68,098,932	4,658	39,211	340,877
Commercial & Industrial	24,884	282,745,809	108,966	750,767	8,605,528
<b>Jan YTD</b>	<b>839,786</b>	<b>22,056,072</b>	<b>9,129</b>	<b>64,935</b>	<b>580,372</b>
Residential	832,597	10,155,156	5,900	39,206	272,987
Low-Income	4,924	2,646,422	267	2,670	21,104
Commercial & Industrial	2,265	9,254,494	2,961	23,059	286,280
<b>YTD as % of goal</b>	<b>23%</b>	<b>4%</b>	<b>5%</b>	<b>5%</b>	<b>4%</b>
Residential	23%	4%	7%	7%	6%
Low-Income	15%	4%	6%	7%	6%
Commercial & Industrial	9%	3%	3%	3%	3%



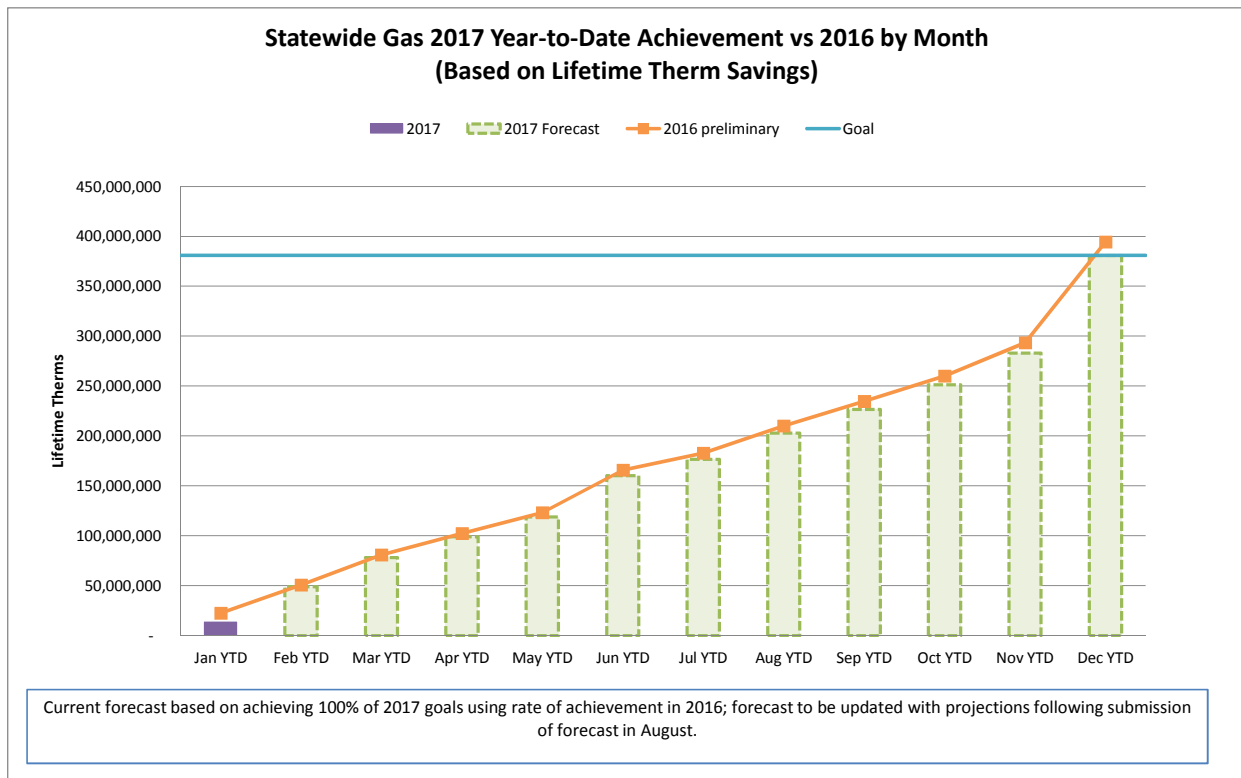
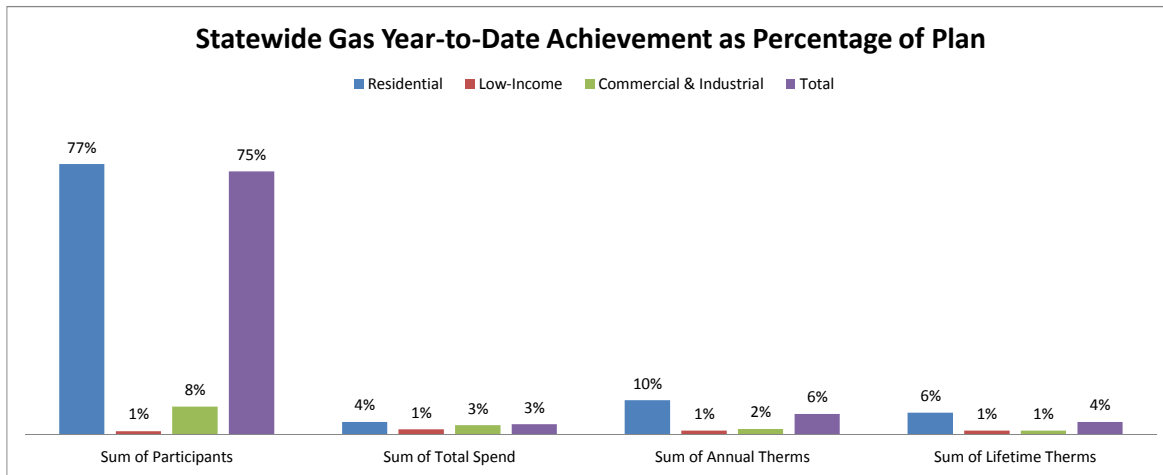
## CUMULATIVE STATEWIDE ELECTRIC DATA DASHBOARD - FROM JAN 1, 2016 THROUGH JAN 31, 2017 (13/36 MONTHS; 36% of term complete)

Row Labels	Values				
	Sum of Participants	Sum of Total Spend	Sum of Capacity (kW)	Sum of Energy (annual MWh)	Sum of Energy (Lifetime MWh)
<b>Electric</b>					
<b>Goal</b>	<b>10,806,363</b>	<b>\$ 1,880,362,093</b>	<b>578,200</b>	<b>4,123,339</b>	<b>41,070,944</b>
Residential	10,635,366	\$ 816,165,146	231,583	1,697,233	13,102,747
Low-Income	96,127	\$ 204,036,648	13,890	116,624	1,026,558
Commercial & Industrial	74,870	\$ 860,160,299	332,727	2,309,482	26,941,639
<b>Jan YTD</b>	<b>4,450,646</b>	<b>535,940,010</b>	<b>237,140</b>	<b>1,556,019</b>	<b>14,056,410</b>
Residential	4,375,349	214,878,428	99,534	662,469	3,861,352
Low-Income	33,513	58,472,311	5,662	46,209	396,234
Commercial & Industrial	41,784	262,589,271	131,943	847,341	9,798,824
<b>YTD as % of goal</b>	<b>41%</b>	<b>29%</b>	<b>41%</b>	<b>38%</b>	<b>34%</b>
Residential	41%	26%	43%	39%	29%
Low-Income	35%	29%	41%	40%	39%
Commercial & Industrial	56%	31%	40%	37%	36%



## MARCH 2017 STATEWIDE GAS DATA DASHBOARD - FROM JAN 1, 2017 THROUGH JAN 31, 2017

Row Labels	Values			
	Sum of Participants	Sum of Total Spend	Sum of Annual Therms	Sum of Lifetime Therms
<b>Gas</b>				
<b>Goal</b>	<b>586,896</b>	<b>\$ 221,747,647</b>	<b>28,504,378</b>	<b>380,806,813</b>
Residential	569,649	\$ 131,598,896	15,185,401	181,611,424
Low-Income	10,725	\$ 45,050,282	2,061,663	40,903,623
Commercial & Industrial	6,522	\$ 45,098,469	11,257,314	158,291,766
Jan YTD	437,807	6,499,744	1,675,490	13,475,382
Residential	437,183	4,660,419	1,475,477	11,242,731
Low-Income	104	651,037	22,815	452,574
Commercial & Industrial	520	1,188,289	177,198	1,780,077
<b>YTD as % of goal</b>	<b>75%</b>	<b>3%</b>	<b>6%</b>	<b>4%</b>
Residential	77%	4%	10%	6%
Low-Income	1%	1%	1%	1%
Commercial & Industrial	8%	3%	2%	1%



## CUMULATIVE STATEWIDE GAS DATA DASHBOARD - FROM JAN 1, 2016 THROUGH JAN 31, 2017 (13/36 MONTHS; 36% of term complete)

Row Labels	Values			
	Sum of Participants	Sum of Total Spend	Sum of Annual Therms	Sum of Lifetime Therms
<b>Gas</b>				
<b>Goal</b>	<b>1,761,480</b>	<b>\$ 671,390,680</b>	<b>86,219,141</b>	<b>1,153,709,247</b>
Residential	1,709,461	\$ 398,714,379	45,891,837	551,936,831
Low-Income	32,305	\$ 135,833,233	6,199,557	123,006,755
Commercial & Industrial	19,714	\$ 136,843,068	34,127,747	478,765,661
Jan YTD	558,350	201,826,008	28,424,005	394,523,246
Residential	537,591	118,796,291	15,736,222	205,051,238
Low-Income	12,087	39,267,844	1,901,536	37,398,146
Commercial & Industrial	8,672	43,761,874	10,786,246	152,073,861
<b>YTD as % of goal</b>	<b>32%</b>	<b>30%</b>	<b>33%</b>	<b>34%</b>
Residential	31%	30%	34%	37%
Low-Income	37%	29%	31%	30%
Commercial & Industrial	44%	32%	32%	32%

