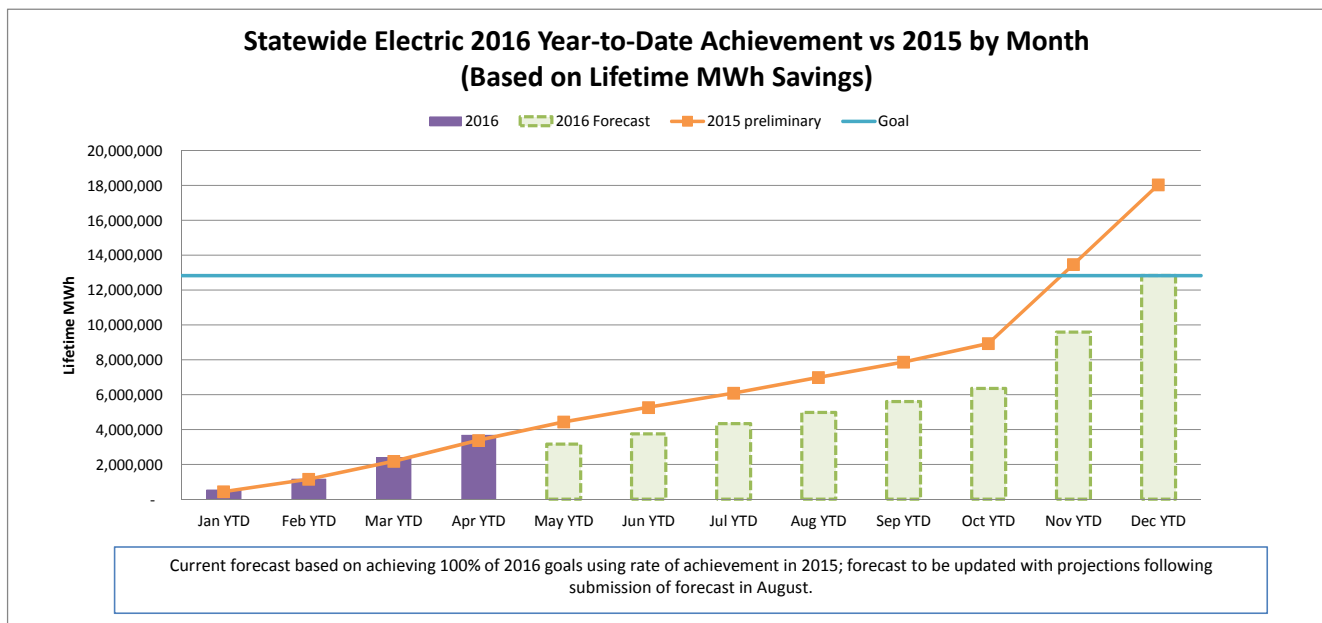
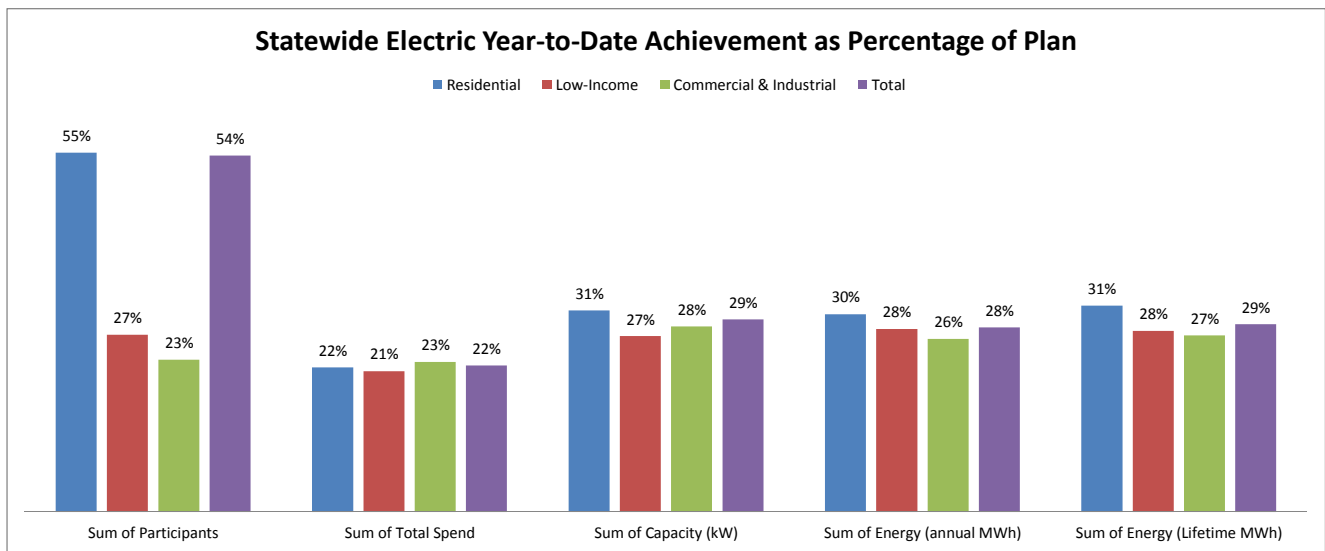


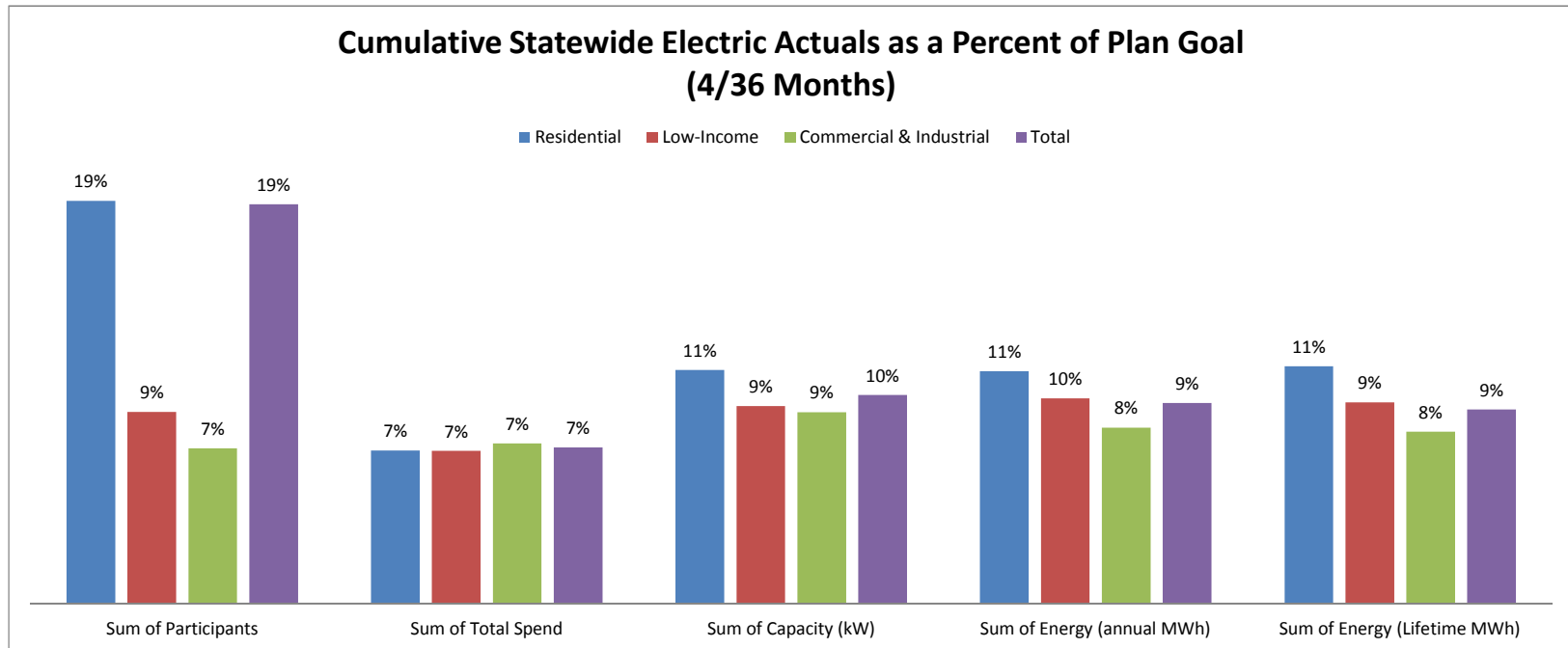
JUNE 2016 STATEWIDE ELECTRIC DATA DASHBOARD - FROM JAN 1, 2016 THROUGH APR 30, 2016

Row Labels	Values				
	Sum of Participants	Sum of Total Spend	Sum of Capacity (kW)	Sum of Energy (annual MWh)	Sum of Energy (Lifetime MWh)
Electric					
Goal	3,750,058	\$ 599,092,724	192,033	1,372,871	12,834,066
Residential	3,695,475	262,032,395	83,864	627,510	4,695,770
Low-Income	31,829	67,636,035	4,847	40,560	354,191
Commercial & Industrial	22,754	269,424,294	103,322	704,801	7,784,105
Apr YTD	2,035,278	\$ 133,696,426	56,258	386,120	3,666,779
Residential	2,021,416	57,724,697	25,749	188,959	1,475,620
Low-Income	8,591	14,495,746	1,298	11,296	97,672
Commercial & Industrial	5,271	61,475,982	29,211	185,865	2,093,487
YTD as % of goal	54%	22%	29%	28%	29%
Residential	55%	22%	31%	30%	31%
Low-Income	27%	21%	27%	28%	28%
Commercial & Industrial	23%	23%	28%	26%	27%



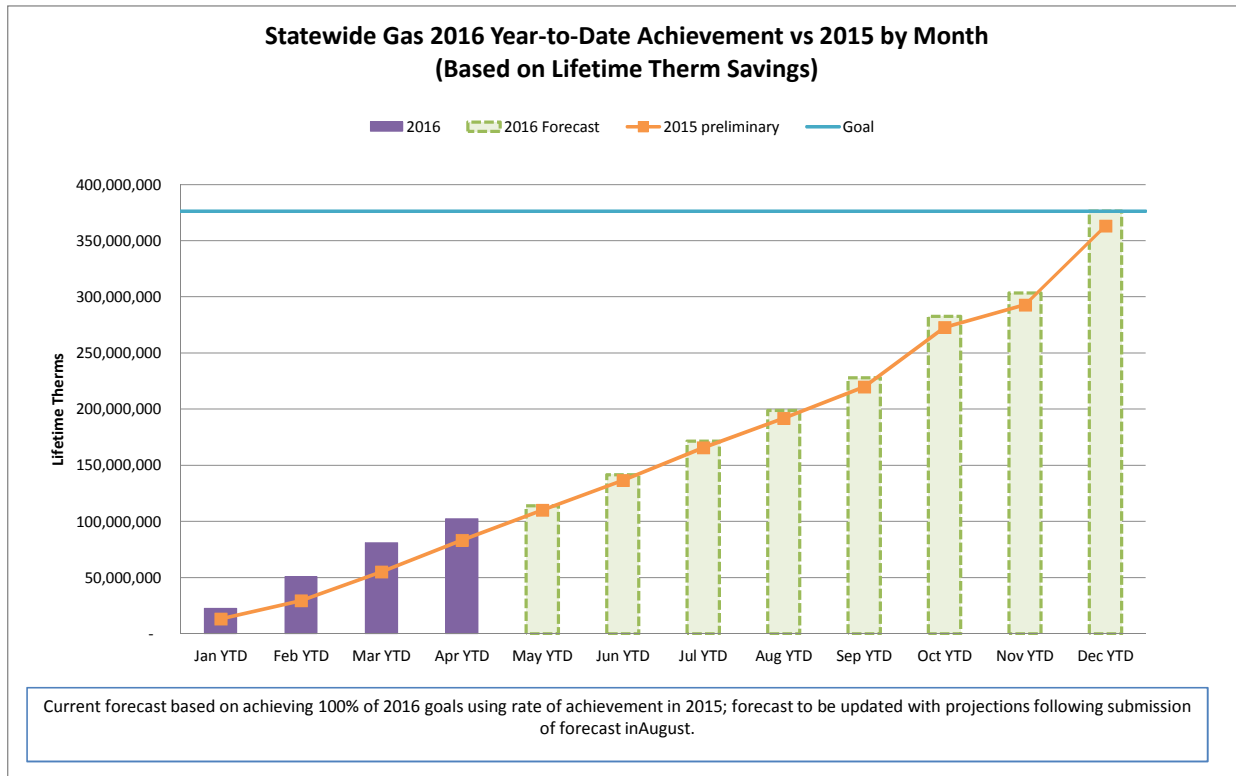
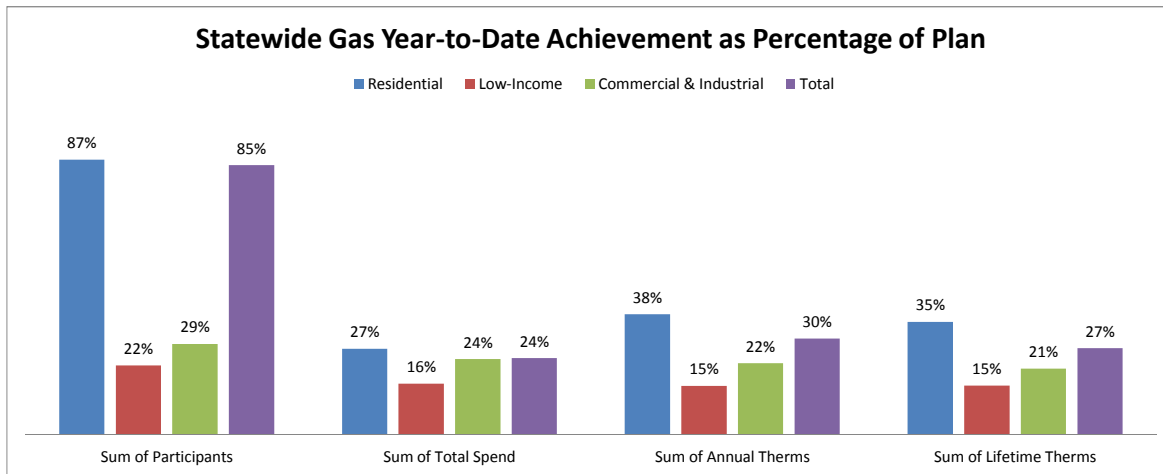
CUMULATIVE STATEWIDE ELECTRIC DATA DASHBOARD - FROM JAN 1, 2016 THROUGH APR 30, 2016 (4/36 MONTHS)

Row Labels	Values				
	Sum of Participants	Sum of Total Spend	Sum of Capacity (kW)	Sum of Energy (annual MWh)	Sum of Energy (Lifetime MWh)
Electric					
Goal	10,905,877	\$ 1,834,538,576	577,296	4,122,145	40,483,538
Residential	10,737,170	\$ 807,804,353	236,134	1,740,656	13,323,450
Low-Income	95,967	\$ 203,573,751	14,079	117,973	1,039,872
Commercial & Industrial	72,740	\$ 823,160,472	327,083	2,263,516	26,120,216
Apr YTD	2,035,278	133,696,426	56,258	386,120	3,666,779
Residential	2,021,416	57,724,697	25,749	188,959	1,475,620
Low-Income	8,591	14,495,746	1,298	11,296	97,672
Commercial & Industrial	5,271	61,475,982	29,211	185,865	2,093,487
YTD as % of goal	19%	7%	10%	9%	9%
Residential	19%	7%	11%	11%	11%
Low-Income	9%	7%	9%	10%	9%
Commercial & Industrial	7%	7%	9%	8%	8%



JUNE 2016 STATEWIDE GAS DATA DASHBOARD - FROM JAN 1, 2016 THROUGH APR 30, 2016

Row Labels	Values			
	Sum of Participants	Sum of Total Spend	Sum of Annual Therms	Sum of Lifetime Therms
Gas				
Goal	587,136	\$ 217,209,003	28,094,852	376,308,951
Residential	570,157	\$ 128,442,097	15,104,655	179,262,960
Low-Income	10,696	\$ 44,617,918	2,054,910	40,776,120
Commercial & Industrial	6,283	\$ 44,148,988	10,935,287	156,269,871
Apr YTD	498,538	\$ 52,429,087	8,505,242	102,453,656
Residential	494,411	\$ 34,741,658	5,729,960	63,621,862
Low-Income	2,330	\$ 7,183,127	316,137	6,295,881
Commercial & Industrial	1,797	\$ 10,504,303	2,459,145	32,535,913
YTD as % of goal	85%	24%	30%	27%
Residential	87%	27%	38%	35%
Low-Income	22%	16%	15%	15%
Commercial & Industrial	29%	24%	22%	21%



CUMULATIVE STATEWIDE GAS DATA DASHBOARD - FROM JAN 1, 2016 THROUGH APR 30, 2016 (4/36 MONTHS)

Row Labels	Values			
	Sum of Participants	Sum of Total Spend	Sum of Annual Therms	Sum of Lifetime Therms
Gas				
Goal	1,761,720	\$ 666,852,036	85,809,615	1,149,211,385
Residential	1,709,969	\$ 395,557,580	45,811,091	549,588,367
Low-Income	32,276	\$ 135,400,869	6,192,804	122,879,252
Commercial & Industrial	19,475	\$ 135,893,587	33,805,720	476,743,766
Apr YTD	498,538	52,429,087	8,505,242	102,453,656
Residential	494,411	34,741,658	5,729,960	63,621,862
Low-Income	2,330	7,183,127	316,137	6,295,881
Commercial & Industrial	1,797	10,504,303	2,459,145	32,535,913
YTD as % of goal	28%	8%	10%	9%
Residential	29%	9%	13%	12%
Low-Income	7%	5%	5%	5%
Commercial & Industrial	9%	8%	7%	7%

