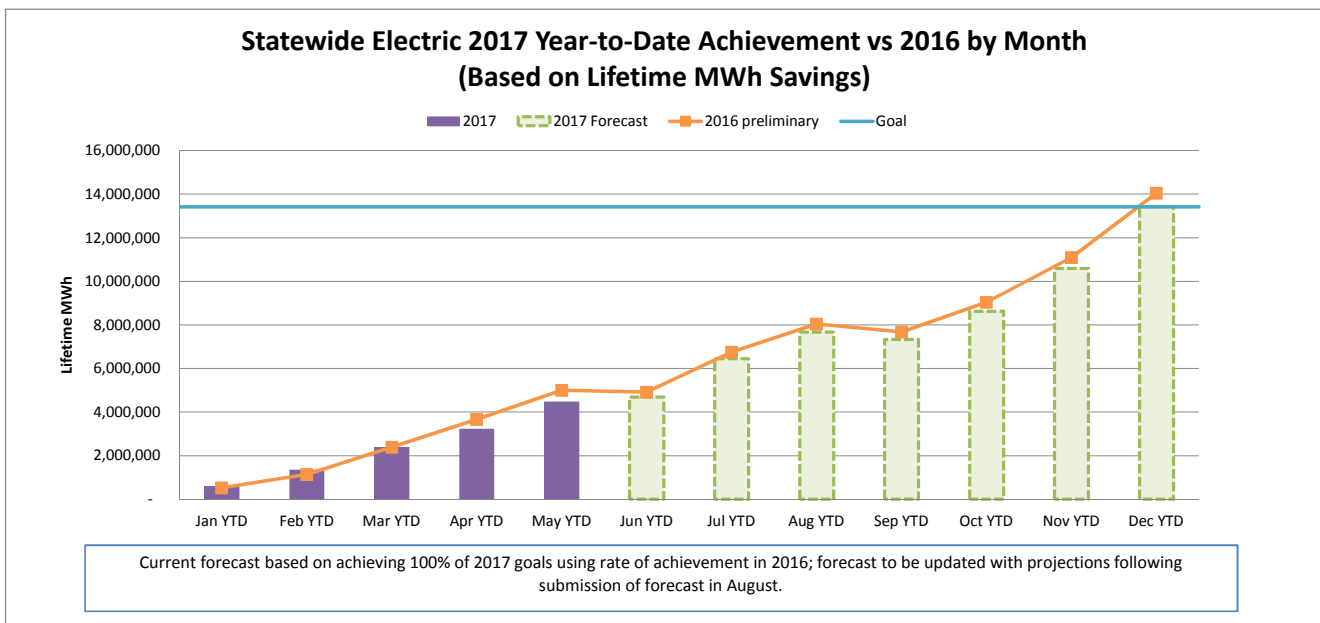
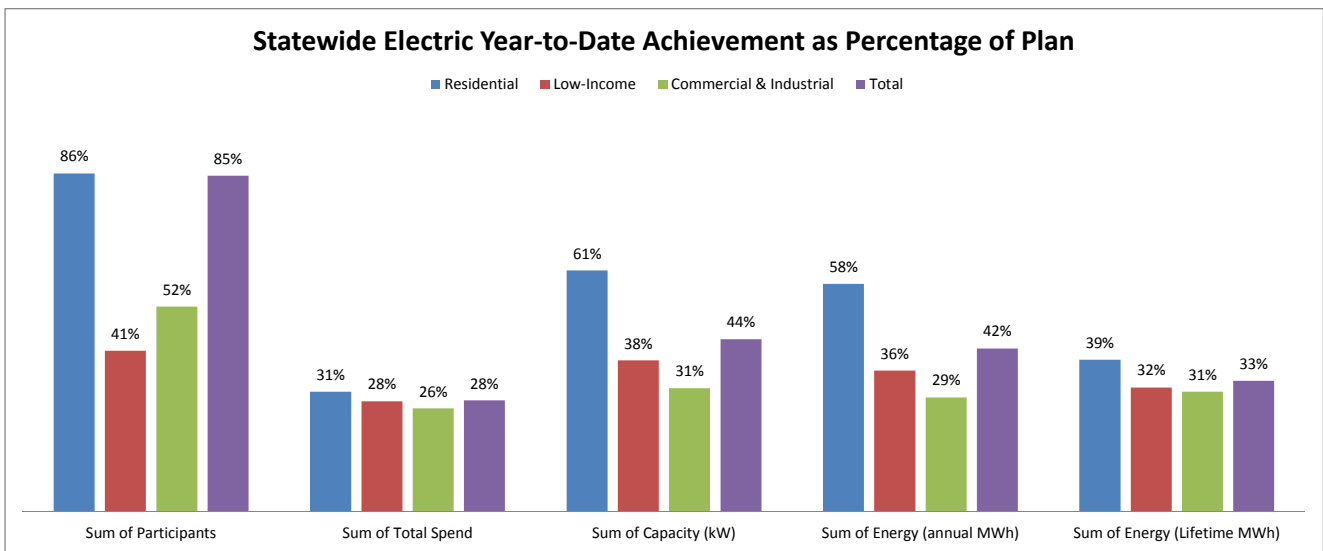


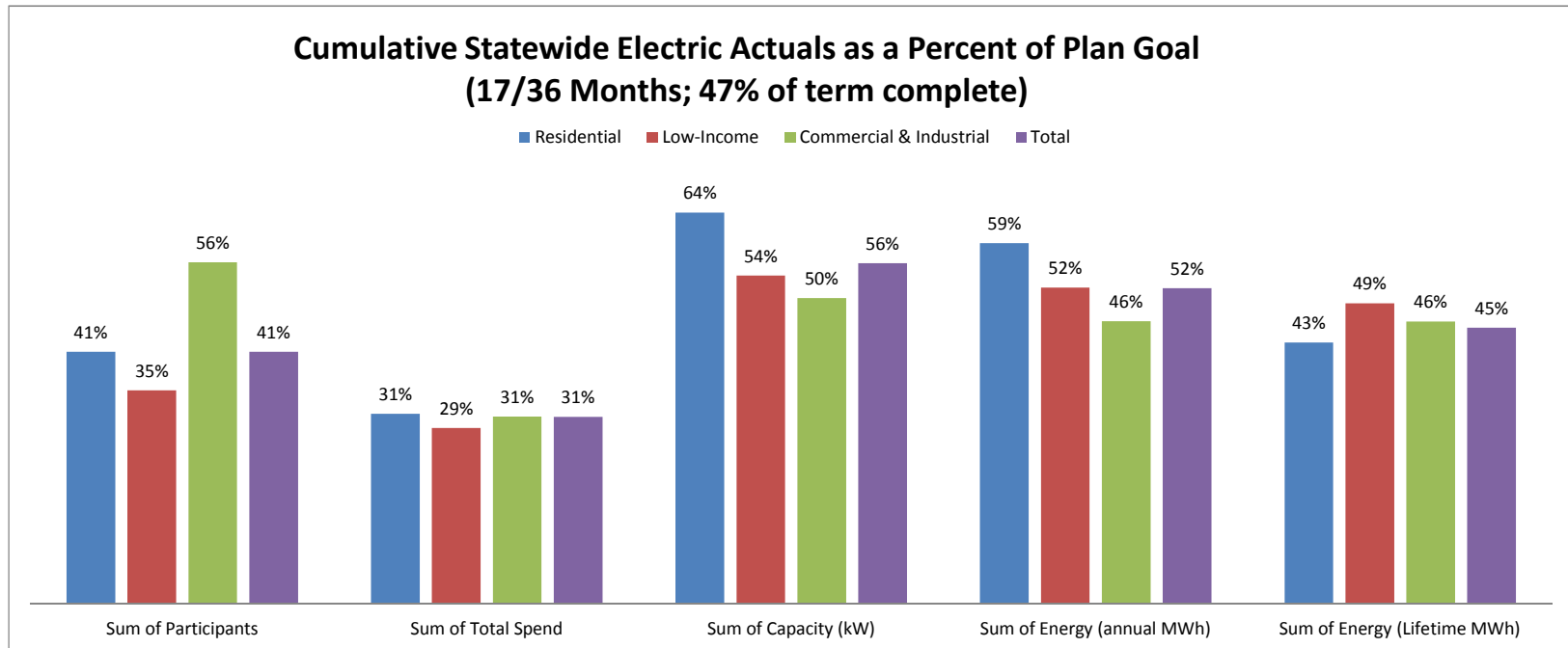
JULY 2017 STATEWIDE ELECTRIC DATA DASHBOARD - FROM JAN 1, 2017 THROUGH MAY 31, 2017

Row Labels	Values				
	Sum of Participants	Sum of Total Spend	Sum of Capacity (kW)	Sum of Energy (annual MWh)	Sum of Energy (Lifetime MWh)
Electric					
Goal	3,650,544	\$ 621,237,929	192,937	1,374,065	13,421,472
Residential	3,593,671	270,393,188	79,313	584,087	4,475,067
Low-Income	31,989	68,098,932	4,658	39,211	340,877
Commercial & Industrial	24,884	282,745,809	108,966	750,767	8,605,528
May YTD	3,113,482	175,978,229	84,624	570,450	4,463,492
Residential	3,087,433	82,593,785	48,597	338,102	1,728,590
Low-Income	13,087	19,133,363	1,791	14,053	107,687
Commercial & Industrial	12,962	74,251,081	34,236	218,295	2,627,216
YTD as % of goal	85%	28%	44%	42%	33%
Residential	86%	31%	61%	58%	39%
Low-Income	41%	28%	38%	36%	32%
Commercial & Industrial	52%	26%	31%	29%	31%



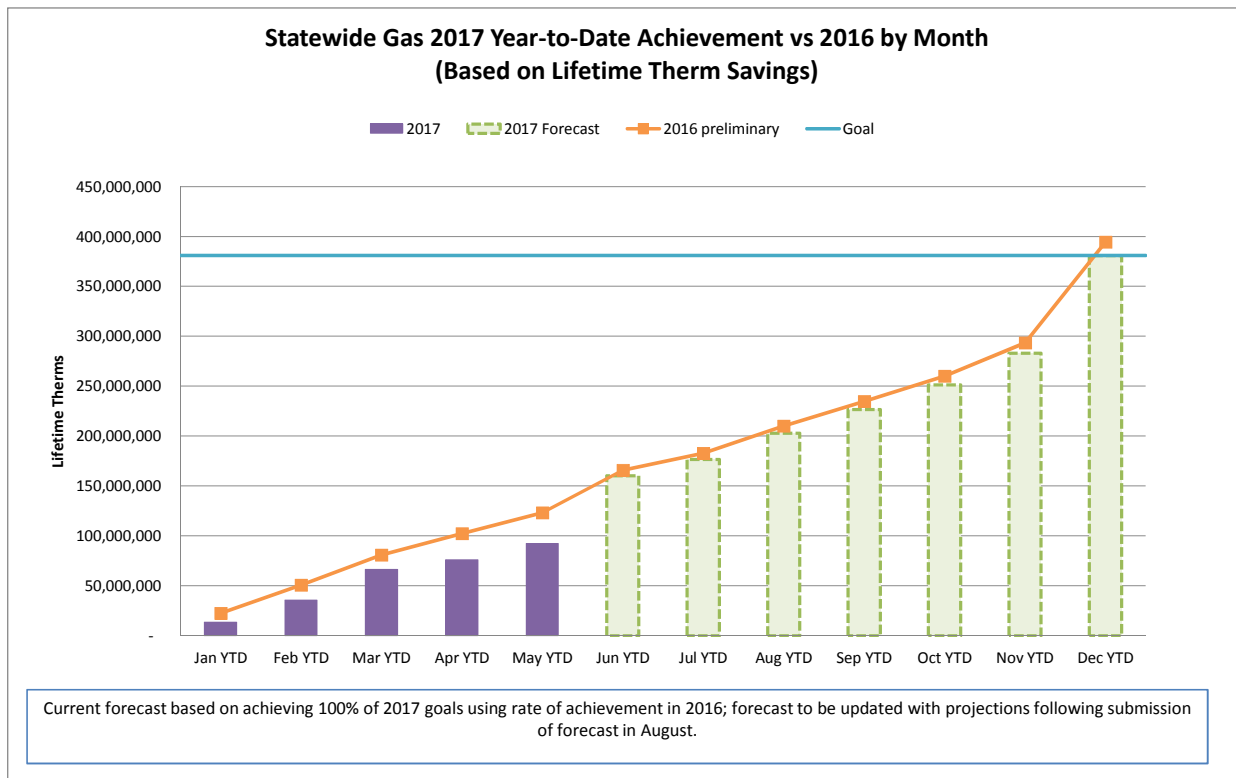
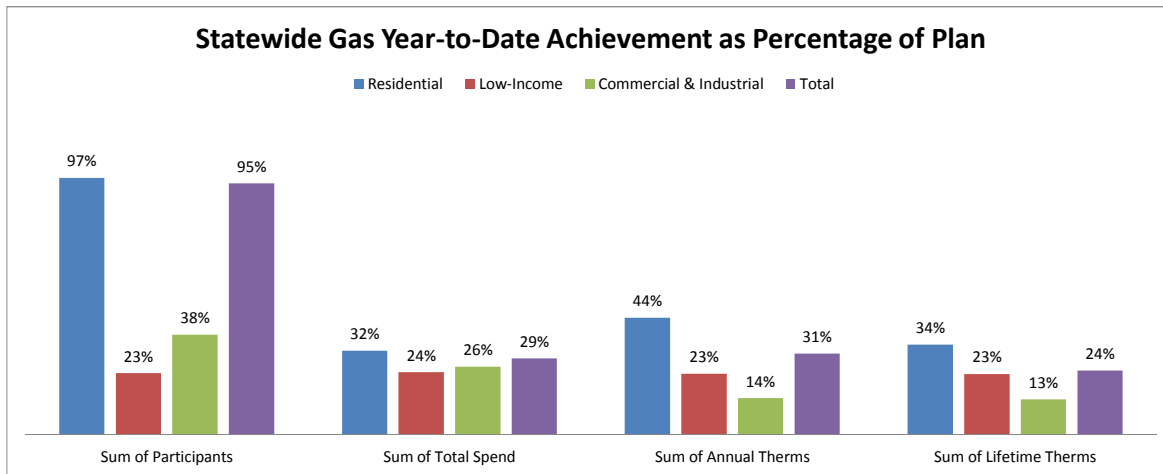
CUMULATIVE STATEWIDE ELECTRIC DATA DASHBOARD - FROM JAN 1, 2016 THROUGH MAY 31, 2017 (17/36 MONTHS; 47% of term complete)

Row Labels	Values				
	Sum of Participants	Sum of Total Spend	Sum of Capacity (kW)	Sum of Energy (annual MWh)	Sum of Energy (Lifetime MWh)
Electric					
Goal	10,806,363	\$ 1,880,362,093	578,200	4,123,339	41,070,944
Residential	10,635,366	\$ 816,165,146	231,583	1,697,233	13,102,747
Low-Income	96,127	\$ 204,036,648	13,890	116,624	1,026,558
Commercial & Industrial	74,870	\$ 860,160,299	332,727	2,309,482	26,941,639
May YTD	4,450,646	573,955,092	321,764	2,126,469	18,519,902
Residential	4,375,349	252,893,509	148,131	1,000,571	5,589,941
Low-Income	33,513	58,472,311	7,454	60,263	503,920
Commercial & Industrial	41,784	262,589,271	166,179	1,065,635	12,426,040
YTD as % of goal	41%	31%	56%	52%	45%
Residential	41%	31%	64%	59%	43%
Low-Income	35%	29%	54%	52%	49%
Commercial & Industrial	56%	31%	50%	46%	46%



JULY 2017 STATEWIDE GAS DATA DASHBOARD - FROM JAN 1, 2017 THROUGH MAY 31, 2017

Row Labels	Values			
	Sum of Participants	Sum of Total Spend	Sum of Annual Therms	Sum of Lifetime Therms
Gas				
Goal	586,896	\$ 221,747,647	28,504,378	380,806,813
Residential	569,649	\$ 131,598,896	15,185,401	181,611,424
Low-Income	10,725	\$ 45,050,282	2,061,663	40,903,623
Commercial & Industrial	6,522	\$ 45,098,469	11,257,314	158,291,766
May YTD	557,934	64,041,947	8,740,166	92,341,996
Residential	552,970	41,821,799	6,710,268	61,898,494
Low-Income	2,500	10,639,773	473,962	9,388,646
Commercial & Industrial	2,464	11,580,375	1,555,936	21,054,856
YTD as % of goal	95%	29%	31%	24%
Residential	97%	32%	44%	34%
Low-Income	23%	24%	23%	23%
Commercial & Industrial	38%	26%	14%	13%



CUMULATIVE STATEWIDE GAS DATA DASHBOARD - FROM JAN 1, 2016 THROUGH MAY 31, 2017 (17/36 MONTHS; 47% of term complete)

Row Labels	Values			
	Sum of Participants	Sum of Total Spend	Sum of Annual Therms	Sum of Lifetime Therms
Gas				
Goal	1,761,480	\$ 671,390,680	86,219,141	1,153,709,247
Residential	1,709,461	\$ 398,714,379	45,891,837	551,936,831
Low-Income	32,305	\$ 135,833,233	6,199,557	123,006,755
Commercial & Industrial	19,714	\$ 136,843,068	34,127,747	478,765,661
May YTD	558,350	201,826,008	37,164,170	486,865,242
Residential	537,591	118,796,291	22,446,490	266,949,733
Low-Income	12,087	39,267,844	2,375,498	46,786,792
Commercial & Industrial	8,672	43,761,874	12,342,183	173,128,717
YTD as % of goal	32%	30%	43%	42%
Residential	31%	30%	49%	48%
Low-Income	37%	29%	38%	38%
Commercial & Industrial	44%	32%	36%	36%

