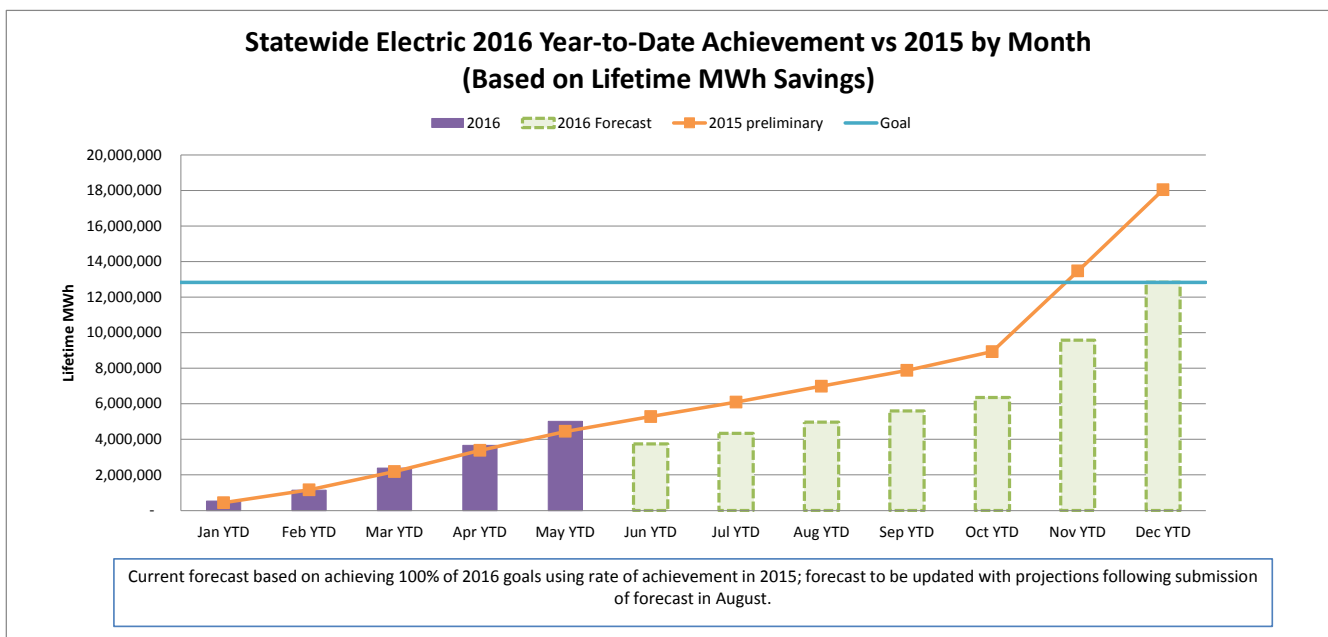
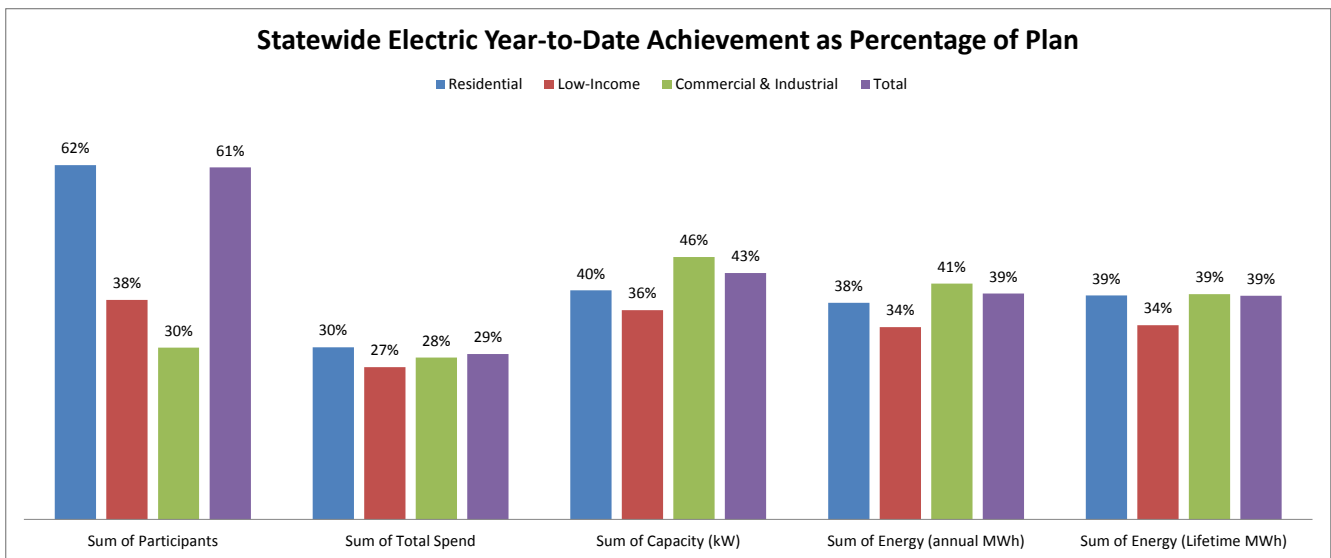


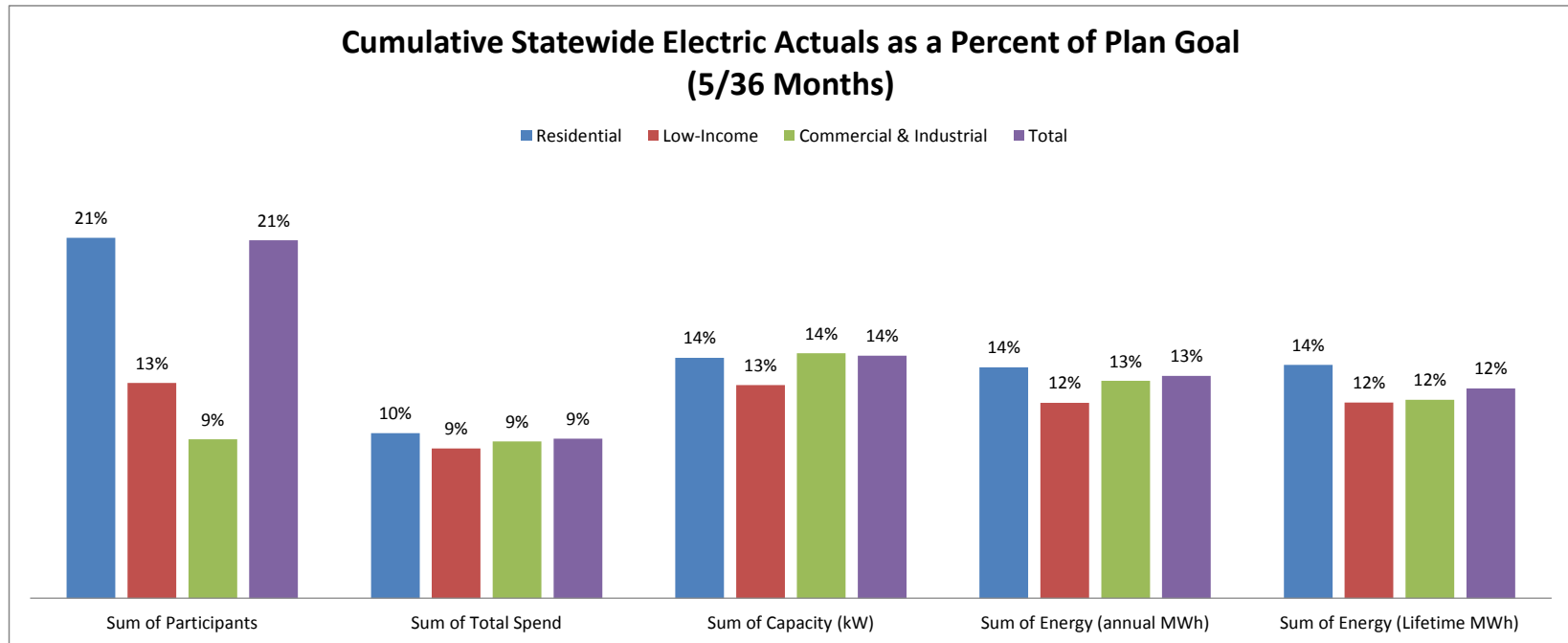
JULY 2016 STATEWIDE ELECTRIC DATA DASHBOARD - FROM JAN 1, 2016 THROUGH MAY 31, 2016

Row Labels	Values				
	Sum of Participants	Sum of Total Spend	Sum of Capacity (kW)	Sum of Energy (annual MWh)	Sum of Energy (Lifetime MWh)
Electric					
Goal	3,750,058	\$ 599,092,724	192,033	1,372,871	12,834,066
Residential	3,695,475	262,032,395	83,864	627,510	4,695,770
Low-Income	31,829	67,636,035	4,847	40,560	354,191
Commercial & Industrial	22,754	269,424,294	103,322	704,801	7,784,105
May YTD	2,300,636	172,683,317	82,501	540,578	5,007,721
Residential	2,281,637	78,642,143	33,478	237,027	1,832,946
Low-Income	12,180	17,959,500	1,768	13,594	119,956
Commercial & Industrial	6,820	76,081,675	47,255	289,957	3,054,818
YTD as % of goal	61%	29%	43%	39%	39%
Residential	62%	30%	40%	38%	39%
Low-Income	38%	27%	36%	34%	34%
Commercial & Industrial	30%	28%	46%	41%	39%



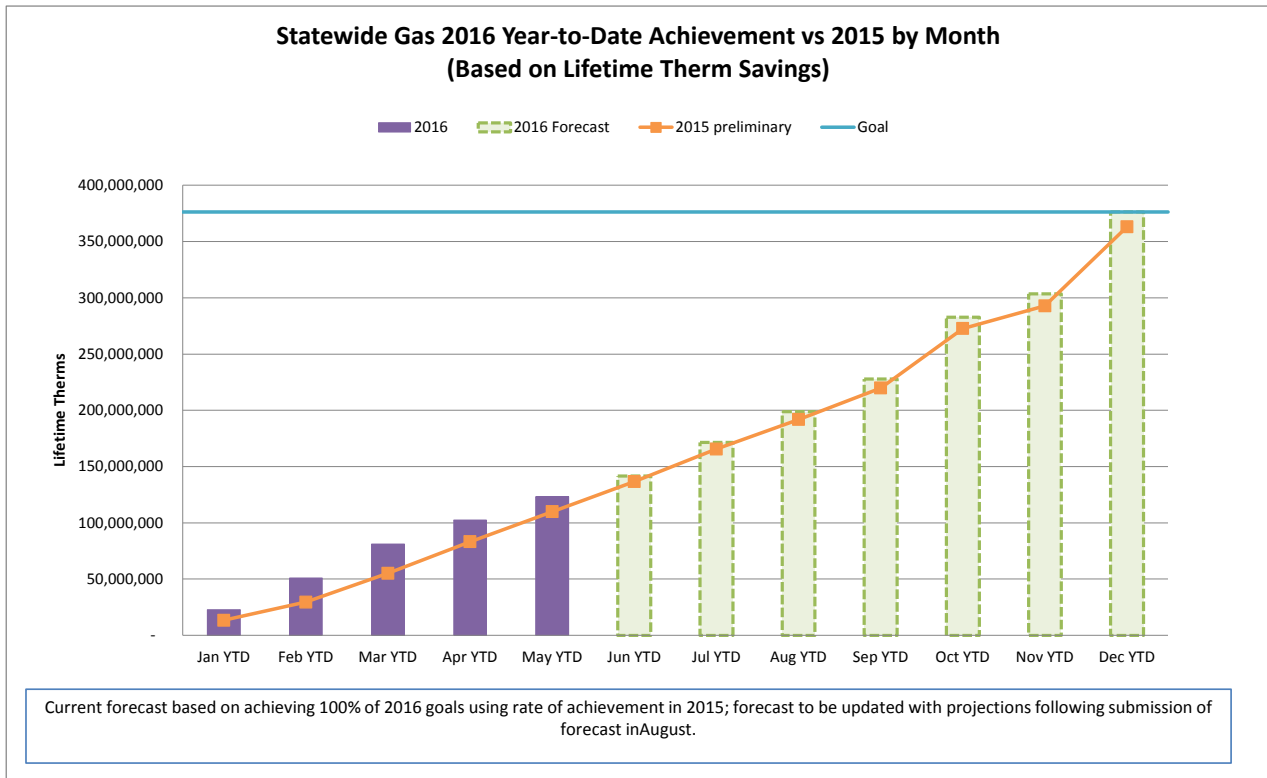
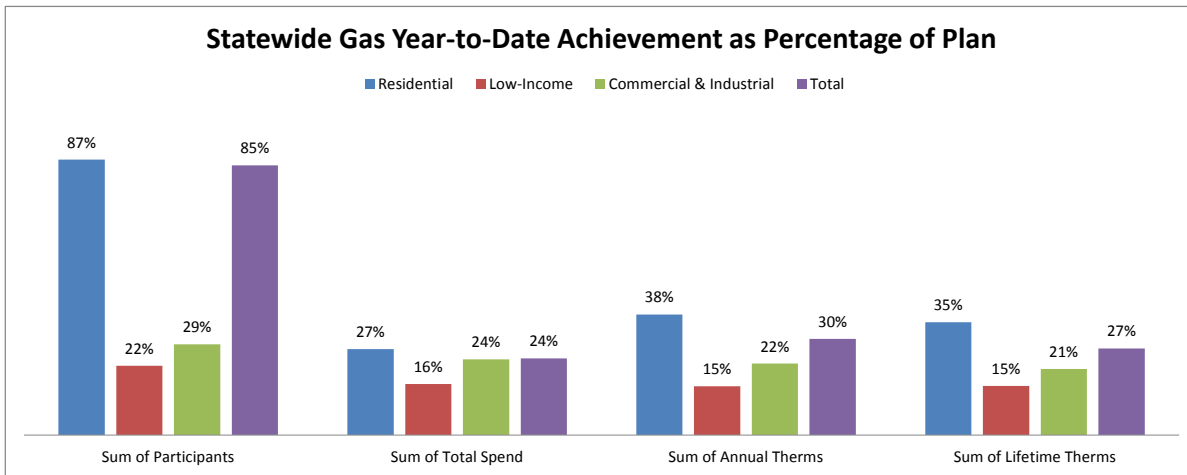
CUMULATIVE STATEWIDE ELECTRIC DATA DASHBOARD - FROM JAN 1, 2016 THROUGH MAY 31, 2016 (5/36 MONTHS)

Row Labels	Values				
	Sum of Participants	Sum of Total Spend	Sum of Capacity (kW)	Sum of Energy (annual MWh)	Sum of Energy (Lifetime MWh)
Electric					
Goal	10,905,877	\$ 1,834,538,576	577,296	4,122,145	40,483,538
Residential	10,737,170	\$ 807,804,353	236,134	1,740,656	13,323,450
Low-Income	95,967	\$ 203,573,751	14,079	117,973	1,039,872
Commercial & Industrial	72,740	\$ 823,160,472	327,083	2,263,516	26,120,216
May YTD	2,300,636	172,683,317	82,501	540,578	5,007,721
Residential	2,281,637	78,642,143	33,478	237,027	1,832,946
Low-Income	12,180	17,959,500	1,768	13,594	119,956
Commercial & Industrial	6,820	76,081,675	47,255	289,957	3,054,818
YTD as % of goal	21%	9%	14%	13%	12%
Residential	21%	10%	14%	14%	14%
Low-Income	13%	9%	13%	12%	12%
Commercial & Industrial	9%	9%	14%	13%	12%



JULY 2016 STATEWIDE GAS DATA DASHBOARD - FROM JAN 1, 2016 THROUGH MAY 31, 2016

Row Labels	Values			
	Sum of Participants	Sum of Total Spend	Sum of Annual Therms	Sum of Lifetime Therms
Gas				
Goal	587,136	\$ 217,209,003	28,094,852	376,308,951
Residential	570,157	\$ 128,442,097	15,104,655	179,262,960
Low-Income	10,696	\$ 44,617,918	2,054,910	40,776,120
Commercial & Industrial	6,283	\$ 44,148,988	10,935,287	156,269,871
Apr YTD	498,538	\$ 52,429,087	8,505,242	102,453,656
Residential	494,411	\$ 34,741,658	5,729,960	63,621,862
Low-Income	2,330	\$ 7,183,127	316,137	6,295,881
Commercial & Industrial	1,797	\$ 10,504,303	2,459,145	32,535,913
YTD as % of goal	85%	24%	30%	27%
Residential	87%	27%	38%	35%
Low-Income	22%	16%	15%	15%
Commercial & Industrial	29%	24%	22%	21%



CUMULATIVE STATEWIDE GAS DATA DASHBOARD - FROM JAN 1, 2016 THROUGH MAY 31, 2016 (5/36 MONTHS)

Row Labels	Values			
	Sum of Participants	Sum of Total Spend	Sum of Annual Therms	Sum of Lifetime Therms
Gas				
Goal	1,761,720	\$ 666,852,036	85,809,615	1,149,211,385
Residential	1,709,969	\$ 395,557,580	45,811,091	549,588,367
Low-Income	32,276	\$ 135,400,869	6,192,804	122,879,252
Commercial & Industrial	19,475	\$ 135,893,587	33,805,720	476,743,766
May YTD	497,861	67,701,418	10,509,687	123,240,442
Residential	493,909	44,967,830	7,301,339	77,995,250
Low-Income	1,938	9,471,767	426,093	8,433,811
Commercial & Industrial	2,014	13,261,821	2,782,254	36,811,382
YTD as % of goal	28%	10%	12%	11%
Residential	29%	11%	16%	14%
Low-Income	6%	7%	7%	7%
Commercial & Industrial	10%	10%	8%	8%

