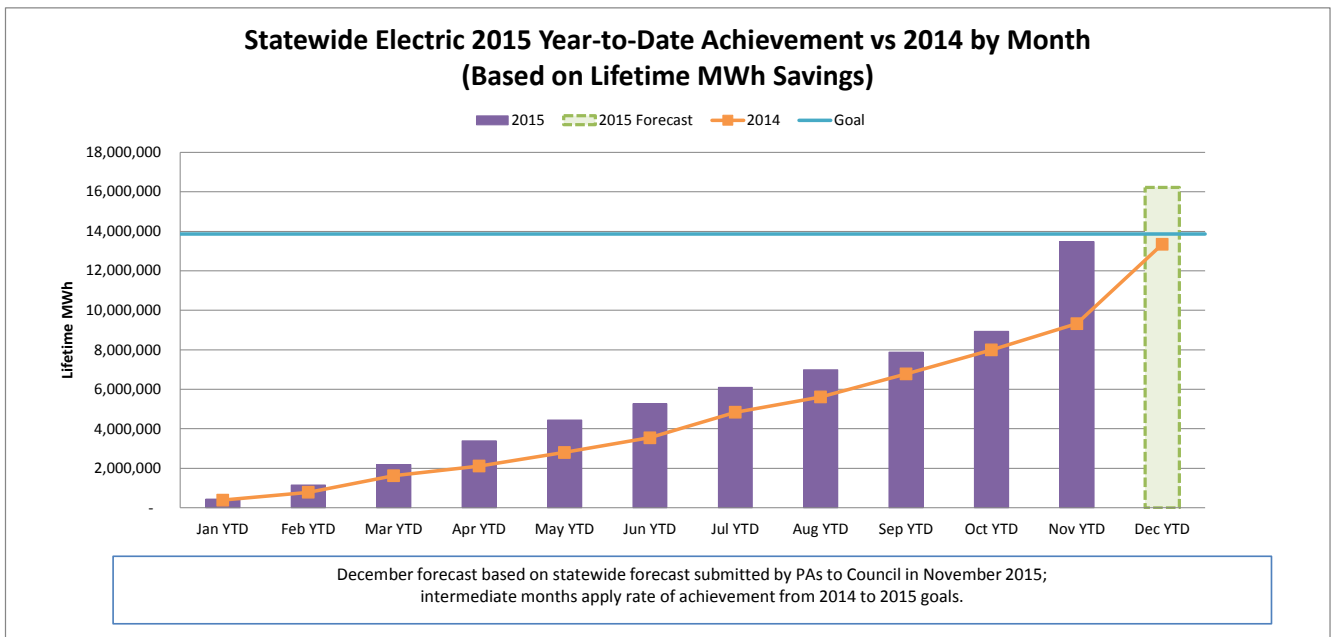
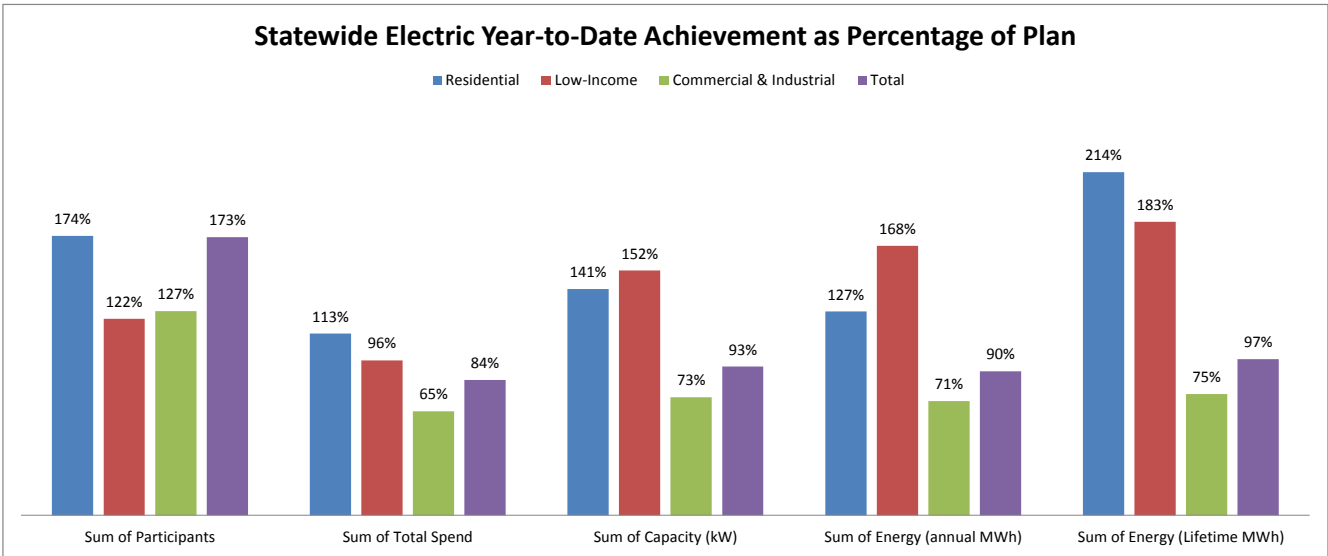


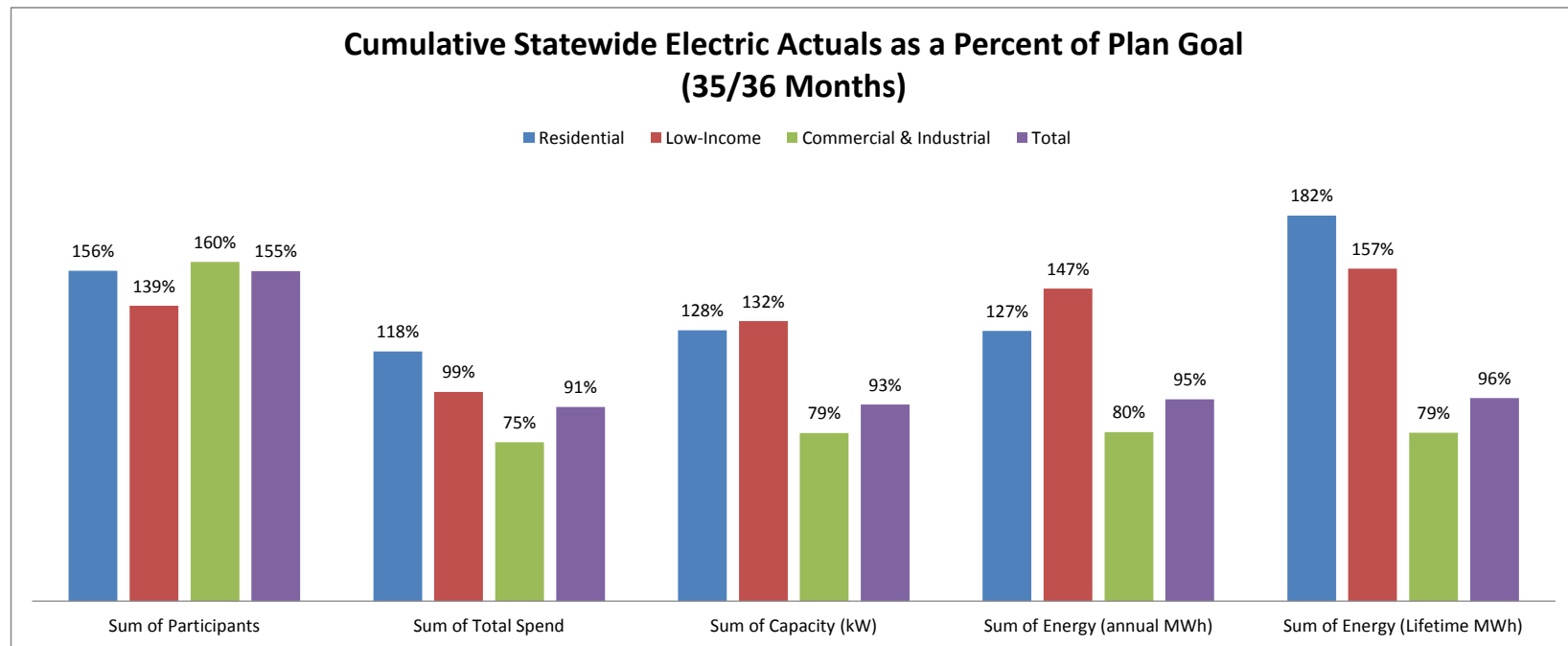
JANUARY 2016 STATEWIDE ELECTRIC DATA DASHBOARD - FROM JAN 1, 2015 THROUGH NOV 30, 2015

Row Labels	Values				
	Sum of Participants	Sum of Total Spend	Sum of Capacity (kW)	Sum of Energy (annual MWh)	Sum of Energy (Lifetime MWh)
Electric					
Goal	2,350,053	\$ 519,094,445	179,573	1,274,646	13,863,794
Residential	2,306,350	171,322,993	47,313	380,446	1,985,572
Low-Income	27,106	56,913,127	3,245	26,794	254,311
Commercial & Industrial	16,597	290,858,324	129,015	867,407	11,623,911
Nov YTD	4,067,679	437,146,753	166,279	1,143,705	13,469,639
Residential	4,013,426	193,724,104	66,601	482,609	4,239,320
Low-Income	33,159	54,895,725	4,944	44,968	464,779
Commercial & Industrial	21,094	188,526,924	94,734	616,128	8,765,540
YTD as % of goal	173%	84%	93%	90%	97%
Residential	174%	113%	141%	127%	214%
Low-Income	122%	96%	152%	168%	183%
Commercial & Industrial	127%	65%	73%	71%	75%



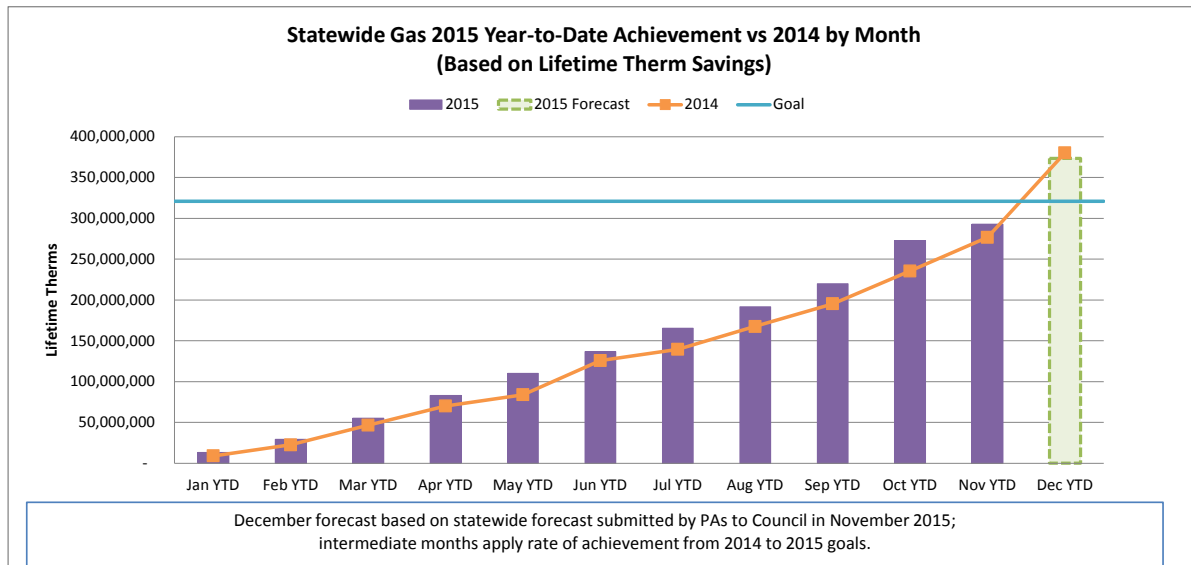
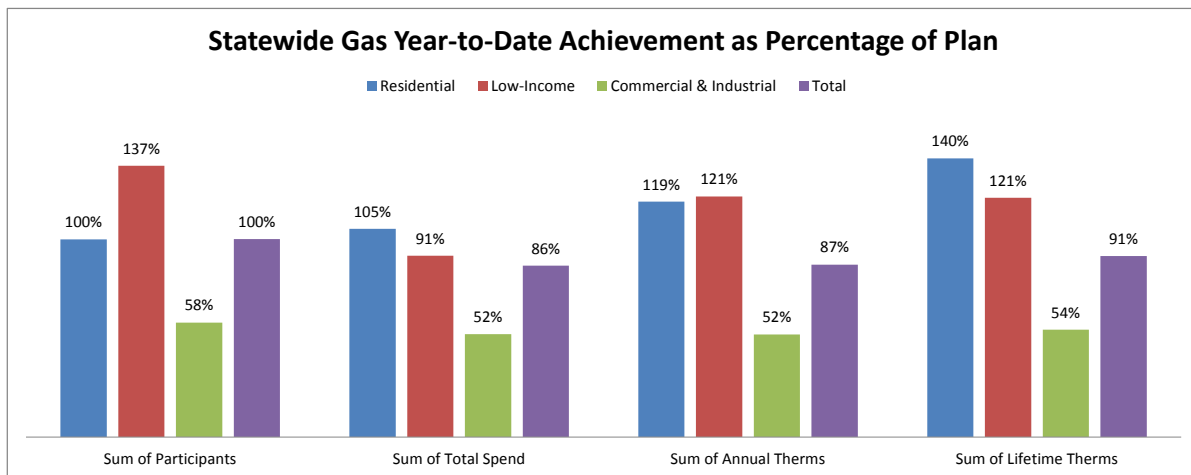
CUMULATIVE STATEWIDE ELECTRIC DATA DASHBOARD - FROM JAN 1, 2013 THROUGH NOV 30, 2015 (35/36 MONTHS)

Row Labels	Values				
	Sum of Participants	Sum of Total Spend	Sum of Capacity (kW)	Sum of Energy (annual MWh)	Sum of Energy (Lifetime MWh)
Electric					
Goal	6,858,617	\$ 1,496,975,555	530,620	3,706,430	40,279,050
Residential	6,726,690	\$ 487,957,884	135,870	1,074,808	5,830,296
Low-Income	82,473	\$ 165,973,664	9,824	83,390	779,383
Commercial & Industrial	49,454	\$ 843,044,007	384,927	2,548,233	33,669,371
Nov YTD	10,660,373	1,368,005,429	490,830	3,519,484	38,482,406
Residential	10,466,711	573,583,578	173,278	1,367,872	10,584,148
Low-Income	114,694	163,588,005	12,954	122,730	1,220,176
Commercial & Industrial	78,968	630,833,846	304,598	2,028,882	26,678,082
YTD as % of goal	155%	91%	93%	95%	96%
Residential	156%	118%	128%	127%	182%
Low-Income	139%	99%	132%	147%	157%
Commercial & Industrial	160%	75%	79%	80%	79%



JANUARY 2016 STATEWIDE GAS DATA DASHBOARD - FROM JAN 1, 2015 THROUGH NOV 30, 2015

Row Labels	Values			
	Sum of Participants	Sum of Total Spend	Sum of Annual Therms	Sum of Lifetime Therms
Gas				
Goal	572,755	\$ 180,154,149	24,951,086	320,982,390
Residential	560,561	\$ 88,771,674	11,605,486	115,703,917
Low-Income	7,009	\$ 37,843,984	1,486,113	29,327,842
Commercial & Industrial	5,185	\$ 53,538,491	11,859,487	175,950,631
Nov YTD	571,071	155,525,284	21,684,990	292,880,246
Residential	558,501	93,185,031	13,763,023	162,481,558
Low-Income	9,578	34,575,994	1,800,214	35,354,576
Commercial & Industrial	2,992	27,764,259	6,121,753	95,044,112
YTD as % of goal	100%	86%	87%	91%
Residential	100%	105%	119%	140%
Low-Income	137%	91%	121%	121%
Commercial & Industrial	58%	52%	52%	54%



CUMULATIVE STATEWIDE GAS DATA DASHBOARD - FROM JAN 1, 2013 THROUGH NOV 30, 2015 (35/36 MONTHS)

Row Labels	Values			
	Sum of Participants	Sum of Total Spend	Sum of Annual Therms	Sum of Lifetime Therms
Gas				
Goal	1,682,827	\$ 523,270,037	72,016,443	937,202,858
Residential	1,647,280	\$ 260,460,223	33,504,079	351,323,512
Low-Income	20,494	\$ 108,181,298	4,322,929	85,197,523
Commercial & Industrial	15,053	\$ 154,628,516	34,189,435	500,681,823
Nov YTD	1,688,517	473,227,138	73,855,726	980,786,754
Residential	1,646,317	273,944,652	42,068,887	482,992,346
Low-Income	30,304	107,457,456	6,717,210	130,578,112
Commercial & Industrial	11,896	91,825,031	25,069,629	367,216,296
YTD as % of goal	100%	90%	103%	105%
Residential	100%	105%	126%	137%
Low-Income	148%	99%	155%	153%
Commercial & Industrial	79%	59%	73%	73%

