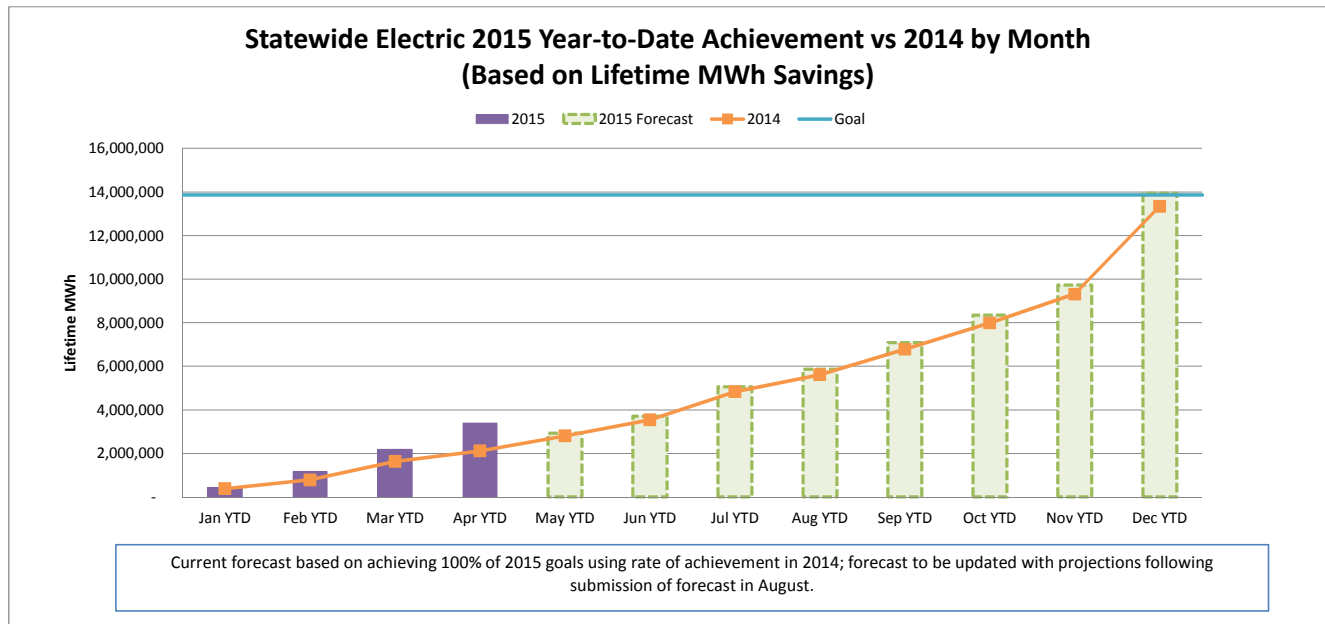
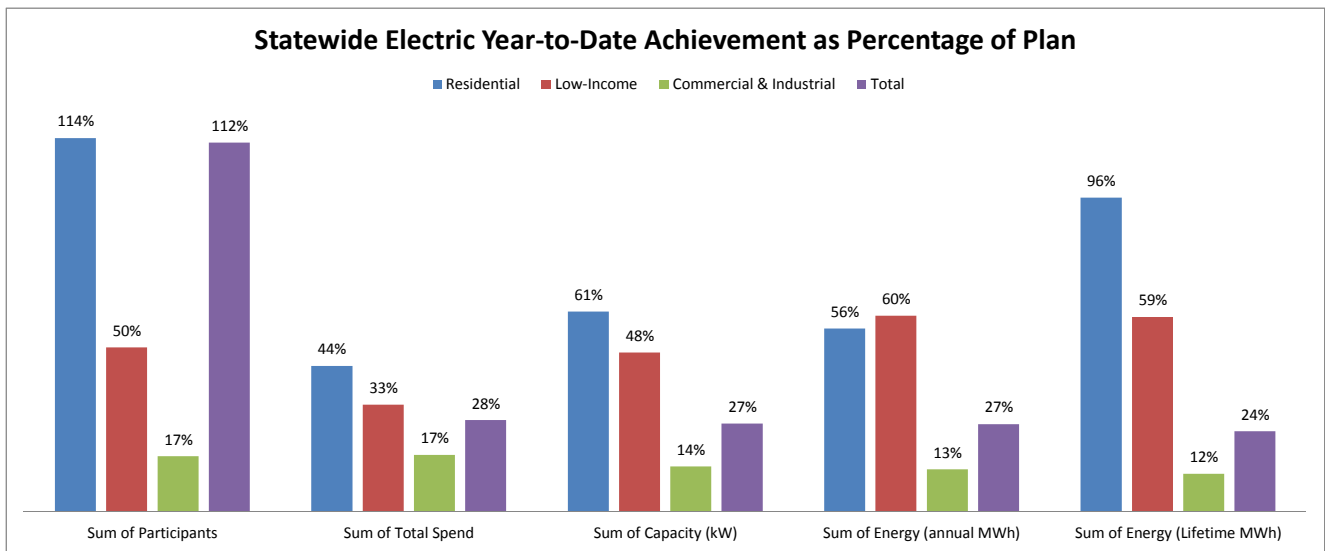


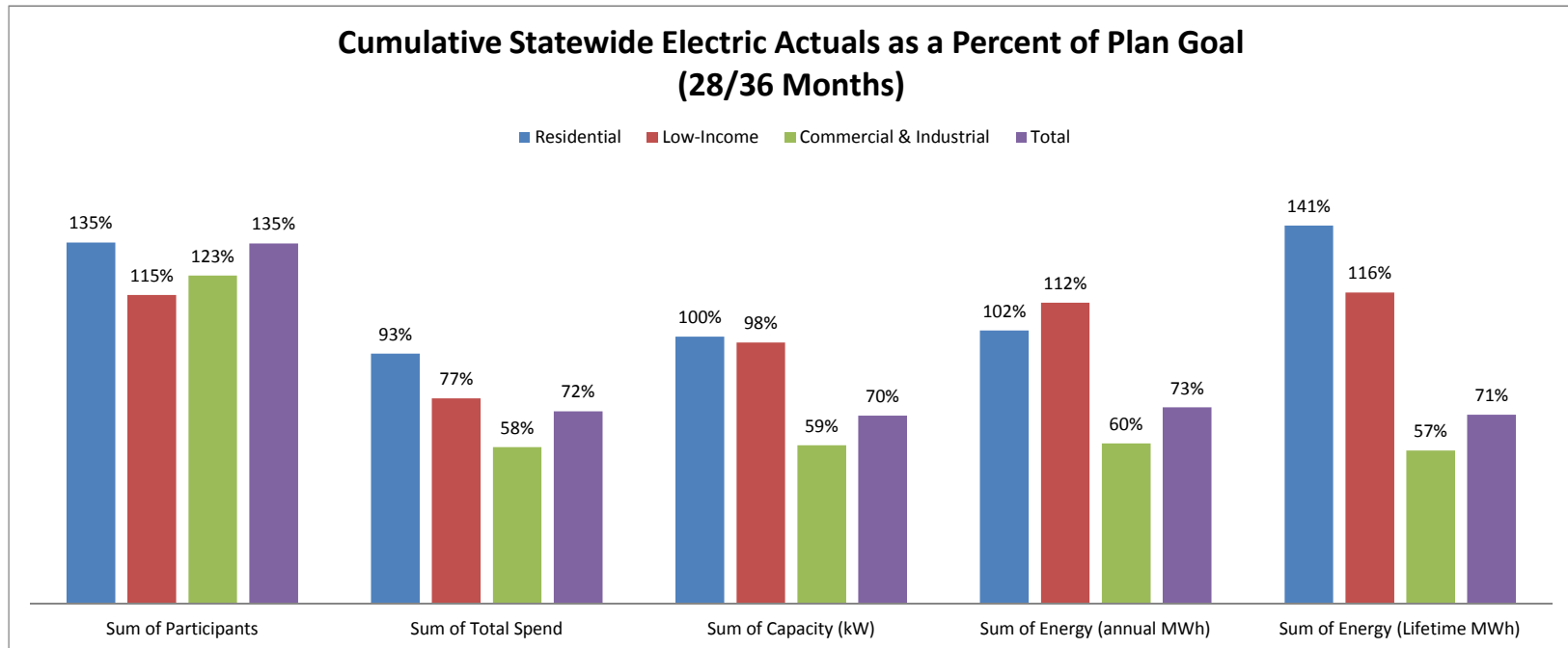
JUNE 2015 STATEWIDE ELECTRIC DATA DASHBOARD - FROM JAN 1, 2015 THROUGH APR 30, 2015

Row Labels	Values				
	Sum of Participants	Sum of Total Spend	Sum of Capacity (kW)	Sum of Energy (annual MWh)	Sum of Energy (Lifetime MWh)
Electric					
Goal	2,350,053	\$ 519,094,445	179,573	1,274,646	13,863,794
Residential	2,306,350	171,322,993	47,313	380,446	1,985,572
Low-Income	27,106	56,913,127	3,245	26,794	254,311
Commercial & Industrial	16,597	290,858,324	129,015	867,407	11,623,911
Apr YTD	2,638,977	\$ 144,537,921	48,034	338,977	3,384,774
Residential	2,622,648	75,926,334	28,784	211,802	1,897,058
Low-Income	13,541	18,524,067	1,571	15,973	150,685
Commercial & Industrial	2,788	50,087,520	17,679	111,203	1,337,031
YTD as % of goal	112%	28%	27%	27%	24%
Residential	114%	44%	61%	56%	96%
Low-Income	50%	33%	48%	60%	59%
Commercial & Industrial	17%	17%	14%	13%	12%



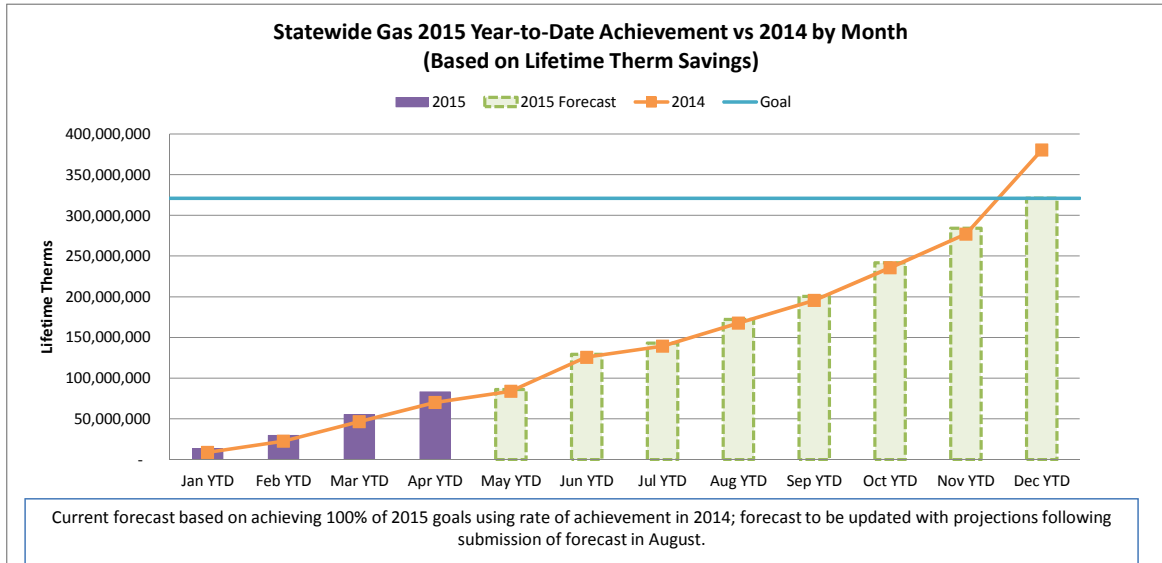
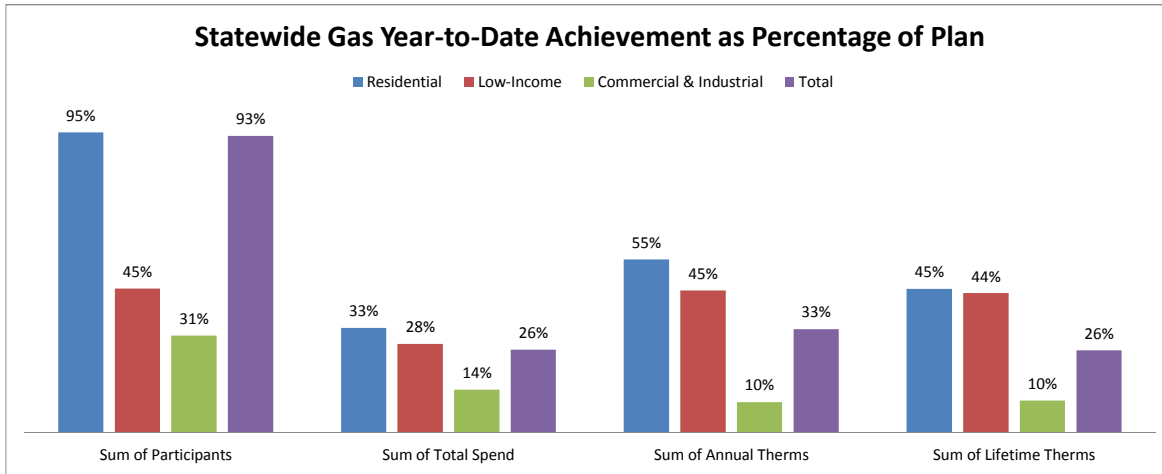
CUMULATIVE STATEWIDE ELECTRIC DATA DASHBOARD - FROM JAN 1, 2013 THROUGH APR 30, 2015 (28/36 MONTHS)

Row Labels	Values				
	Sum of Participants	Sum of Total Spend	Sum of Capacity (kW)	Sum of Energy (annual MWh)	Sum of Energy (Lifetime MWh)
Electric					
Goal	6,858,617	\$ 1,496,975,555	530,620	3,706,430	40,279,050
Residential	6,726,690	\$ 487,957,884	135,870	1,074,808	5,830,296
Low-Income	82,473	\$ 165,973,664	9,824	83,390	779,383
Commercial & Industrial	49,454	\$ 843,044,007	384,927	2,548,233	33,669,371
Apr YTD	9,231,671	1,075,396,597	372,586	2,714,756	28,397,541
Residential	9,075,933	455,785,808	135,461	1,097,064	8,241,886
Low-Income	95,076	127,216,347	9,582	93,734	906,082
Commercial & Industrial	60,662	492,394,442	227,543	1,523,957	19,249,574
YTD as % of goal	135%	72%	70%	73%	71%
Residential	135%	93%	100%	102%	141%
Low-Income	115%	77%	98%	112%	116%
Commercial & Industrial	123%	58%	59%	60%	57%



JUNE 2015 STATEWIDE GAS DATA DASHBOARD - FROM JAN 1, 2015 THROUGH APR 30, 2015

Row Labels	Values			
	Sum of Participants	Sum of Total Spend	Sum of Annual Therms	Sum of Lifetime Therms
Gas				
Goal	572,755	\$ 181,214,302	24,951,086	320,982,390
Residential	560,561	\$ 89,390,158	11,605,486	115,703,917
Low-Income	7,009	\$ 37,930,323	1,486,113	29,327,842
Commercial & Industrial	5,185	\$ 53,893,821	11,859,487	175,950,631
Apr YTD	535,483	\$ 47,402,405	8,149,248	83,236,548
Residential	530,714	\$ 29,471,470	6,339,159	52,450,904
Low-Income	3,181	\$ 10,608,965	665,870	12,891,777
Commercial & Industrial	1,588	\$ 7,321,970	1,144,220	17,893,868
YTD as % of goal	93%	26%	33%	26%
Residential	95%	33%	55%	45%
Low-Income	45%	28%	45%	44%
Commercial & Industrial	31%	14%	10%	10%



CUMULATIVE STATEWIDE GAS DATA DASHBOARD - FROM JAN 1, 2013 THROUGH APR 30, 2015 (28/36 MONTHS)

Row Labels	Values			
	Sum of Participants	Sum of Total Spend	Sum of Annual Therms	Sum of Lifetime Therms
Gas				
Goal	1,682,827	\$ 535,681,984	72,016,443	937,202,858
Residential	1,647,280	\$ 272,430,502	33,504,079	351,323,512
Low-Income	20,494	\$ 108,267,637	4,322,929	85,197,523
Commercial & Industrial	15,053	\$ 154,983,846	34,189,435	500,681,823
Apr YTD	1,652,929	365,104,259	60,319,984	771,143,056
Residential	1,618,530	210,231,090	34,645,022	372,961,692
Low-Income	23,907	83,490,427	5,582,865	108,115,313
Commercial & Industrial	10,492	71,382,742	20,092,097	290,066,052
YTD as % of goal	98%	68%	84%	82%
Residential	98%	77%	103%	106%
Low-Income	117%	77%	129%	127%
Commercial & Industrial	70%	46%	59%	58%

