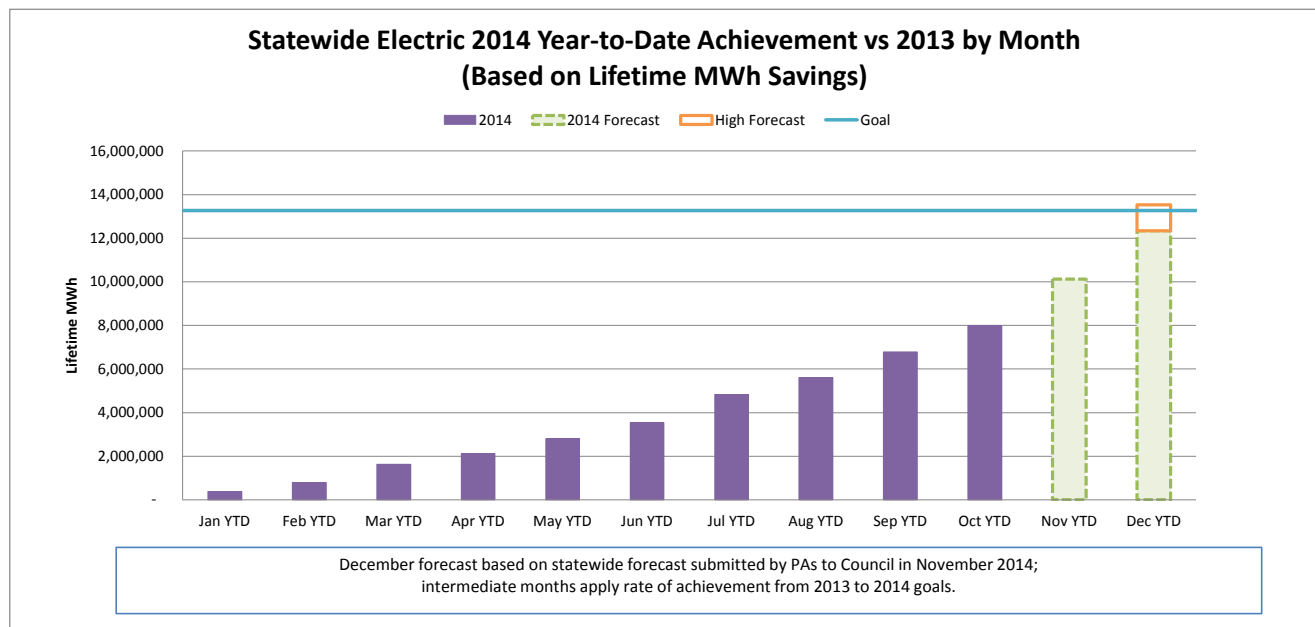
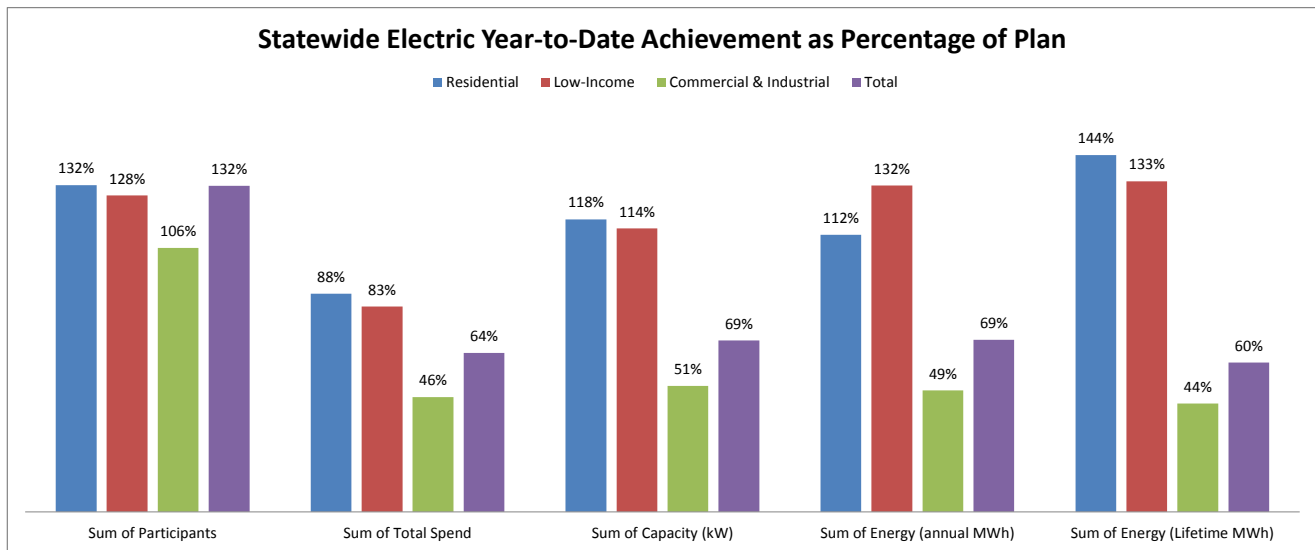


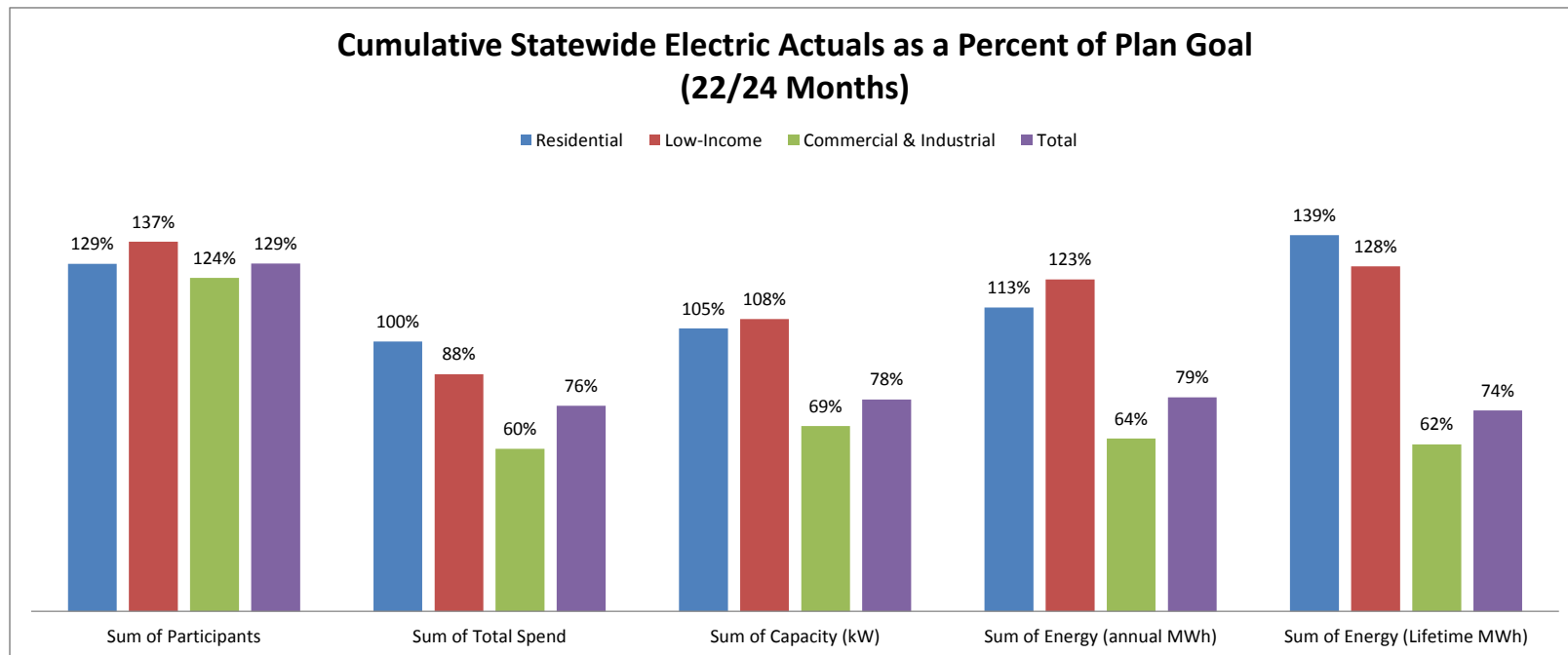
DECEMBER 2014 STATEWIDE ELECTRIC DATA DASHBOARD - FROM JAN 1, 2014 THROUGH OCT 31, 2014

Row Labels	Values				
	Sum of Participants	Sum of Total Spend	Sum of Capacity (kW)	Sum of Energy (annual MWh)	Sum of Energy (Lifetime MWh)
Electric					
Goal	2,303,685	\$ 496,018,277	177,696	1,236,598	13,268,628
Residential	2,259,817	\$ 162,852,400	45,584	364,571	1,952,344
Low-Income	27,488	\$ 54,923,703	3,246	27,759	260,056
Commercial & Industrial	16,380	\$ 278,242,174	128,866	844,268	11,056,228
Oct YTD	3,030,234	317,749,624	122,902	857,359	7,994,138
Residential	2,977,727	143,351,280	53,789	407,391	2,809,807
Low-Income	35,068	45,468,723	3,710	36,527	346,735
Commercial & Industrial	17,439	128,929,621	65,403	413,440	4,837,596
YTD as % of goal	132%	64%	69%	69%	60%
Residential	132%	88%	118%	112%	144%
Low-Income	128%	83%	114%	132%	133%
Commercial & Industrial	106%	46%	51%	49%	44%



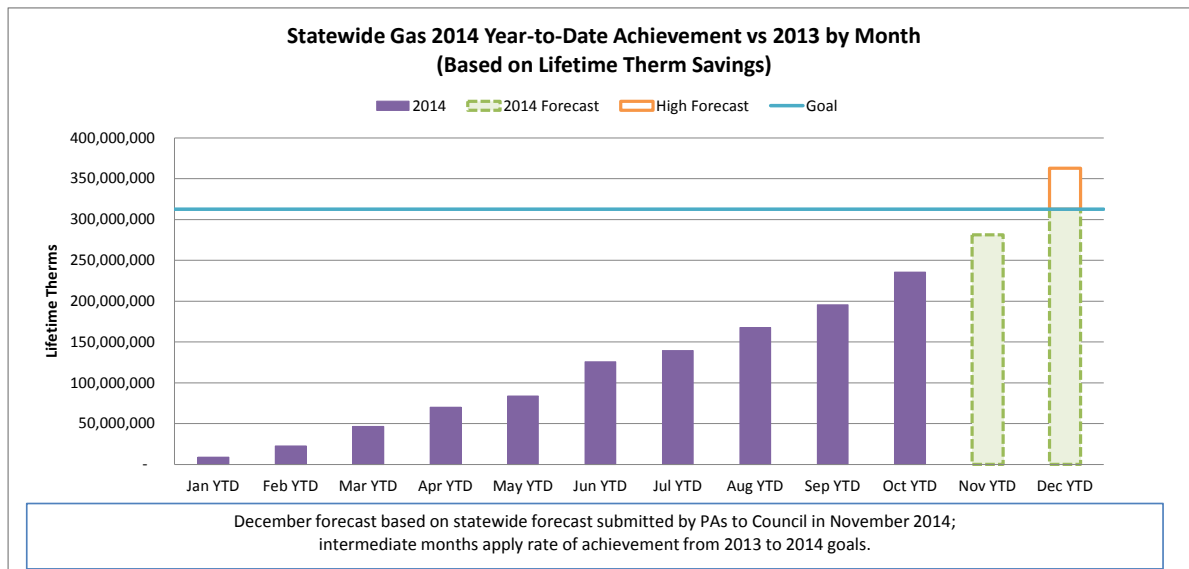
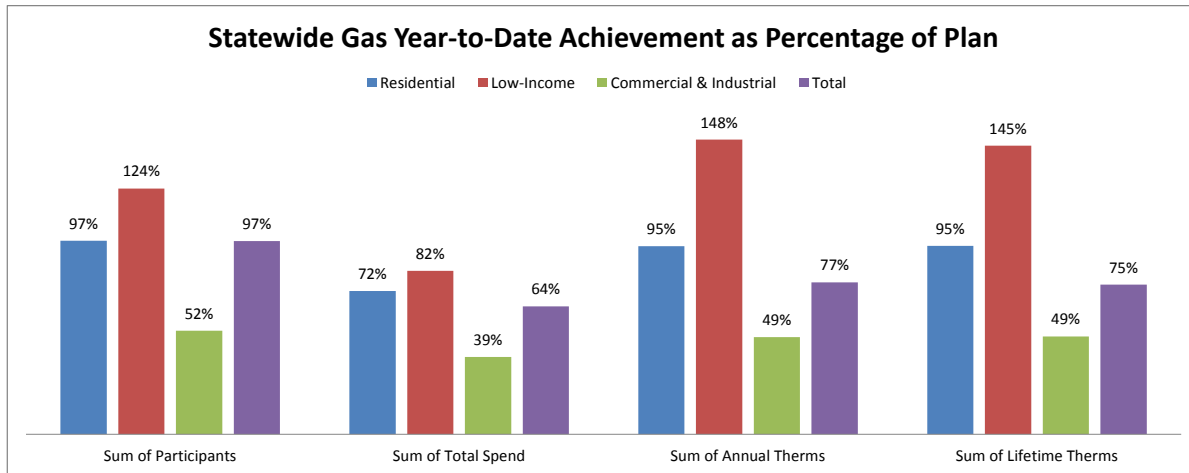
CUMULATIVE STATEWIDE ELECTRIC DATA DASHBOARD - FROM JAN 1, 2013 THROUGH OCT 31, 2014 (22/24 MONTHS)

Row Labels	Values				
	Sum of Participants	Sum of Total Spend	Sum of Capacity (kW)	Sum of Energy (annual MWh)	Sum of Energy (Lifetime MWh)
Electric					
Goal	4,508,565	\$ 977,881,110	351,047	2,431,784	26,415,256
Residential	4,420,340	\$ 316,634,891	88,557	694,361	3,844,724
Low-Income	55,367	\$ 109,060,537	6,579	56,596	525,072
Commercial & Industrial	32,857	\$ 552,185,683	255,912	1,680,826	22,045,460
Oct YTD	5,806,506	744,854,404	275,476	1,926,331	19,667,201
Residential	5,690,134	316,459,428	92,783	781,278	5,357,790
Low-Income	75,792	95,802,587	7,125	69,602	670,950
Commercial & Industrial	40,580	332,592,389	175,567	1,075,450	13,638,460
YTD as % of goal	129%	76%	78%	79%	74%
Residential	129%	100%	105%	113%	139%
Low-Income	137%	88%	108%	123%	128%
Commercial & Industrial	124%	60%	69%	64%	62%



DECEMBER 2014 STATEWIDE GAS DATA DASHBOARD - FROM JAN 1, 2014 THROUGH OCT 31, 2014

Row Labels	Values			
	Sum of Participants	Sum of Total Spend	Sum of Annual Therms	Sum of Lifetime Therms
Gas				
Goal	560,883	\$ 174,635,473	24,402,858	312,695,505
Residential	549,030	\$ 86,902,669	11,607,811	119,006,291
Low-Income	6,840	\$ 35,928,339	1,439,072	28,354,752
Commercial & Industrial	5,014	\$ 51,804,465	11,355,975	165,334,462
Oct YTD	545,871	112,477,914	18,680,670	235,476,655
Residential	534,788	62,726,703	10,991,220	112,829,416
Low-Income	8,469	29,555,239	2,135,192	41,209,067
Commercial & Industrial	2,614	20,195,972	5,554,258	81,438,172
YTD as % of goal	97%	64%	77%	75%
Residential	97%	72%	95%	95%
Low-Income	124%	82%	148%	145%
Commercial & Industrial	52%	39%	49%	49%



CUMULATIVE STATEWIDE GAS DATA DASHBOARD - FROM JAN 1, 2013 THROUGH OCT 31, 2014 (22/24 MONTHS)

Row Labels	Values			
	Sum of Participants	Sum of Total Spend	Sum of Annual Therms	Sum of Lifetime Therms
Gas				
Goal	1,110,071	\$ 343,115,888	47,065,357	616,220,468
Residential	1,086,719	\$ 171,688,550	21,898,593	235,619,595
Low-Income	13,484	\$ 70,337,314	2,836,815	55,869,681
Commercial & Industrial	9,868	\$ 101,090,025	22,329,948	324,731,192
Oct YTD	1,113,902	264,283,267	42,604,743	543,112,977
Residential	1,087,570	150,115,342	24,164,282	258,735,835
Low-Income	18,462	64,138,807	4,420,740	85,342,905
Commercial & Industrial	7,870	50,029,117	14,019,721	199,034,237
YTD as % of goal	100%	77%	91%	88%
Residential	100%	87%	110%	110%
Low-Income	137%	91%	156%	153%
Commercial & Industrial	80%	49%	63%	61%

