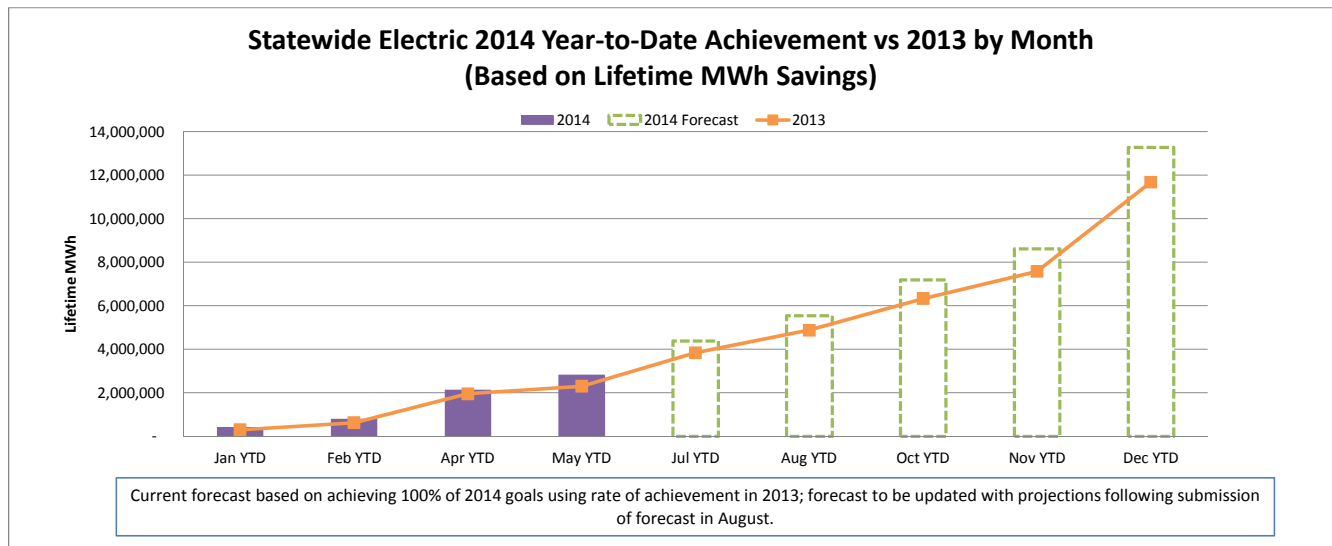
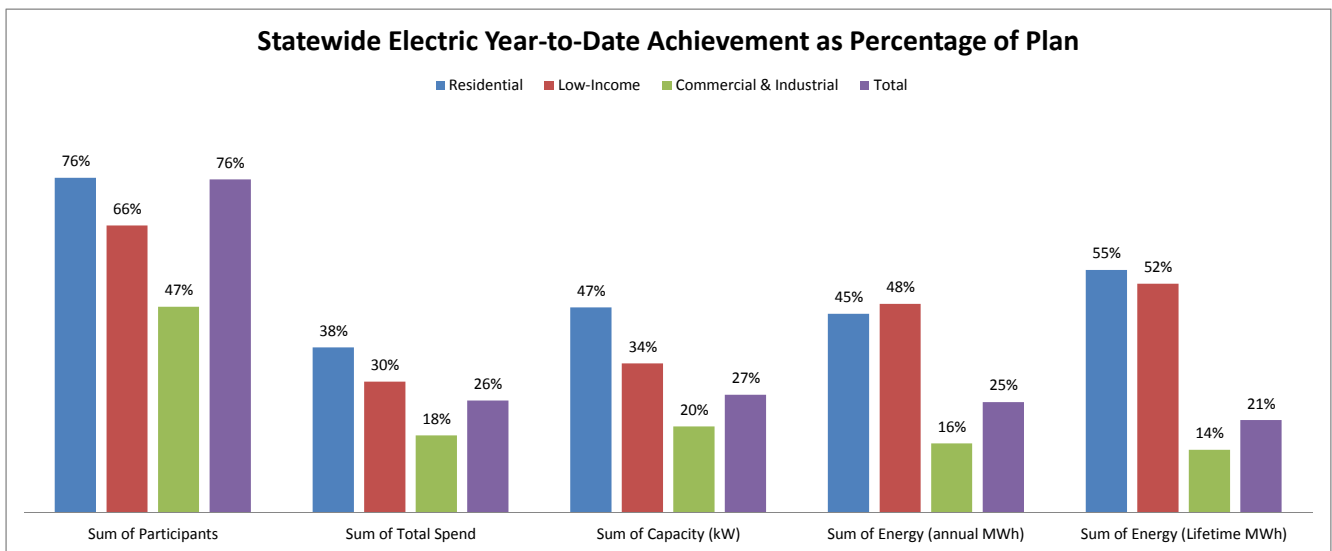


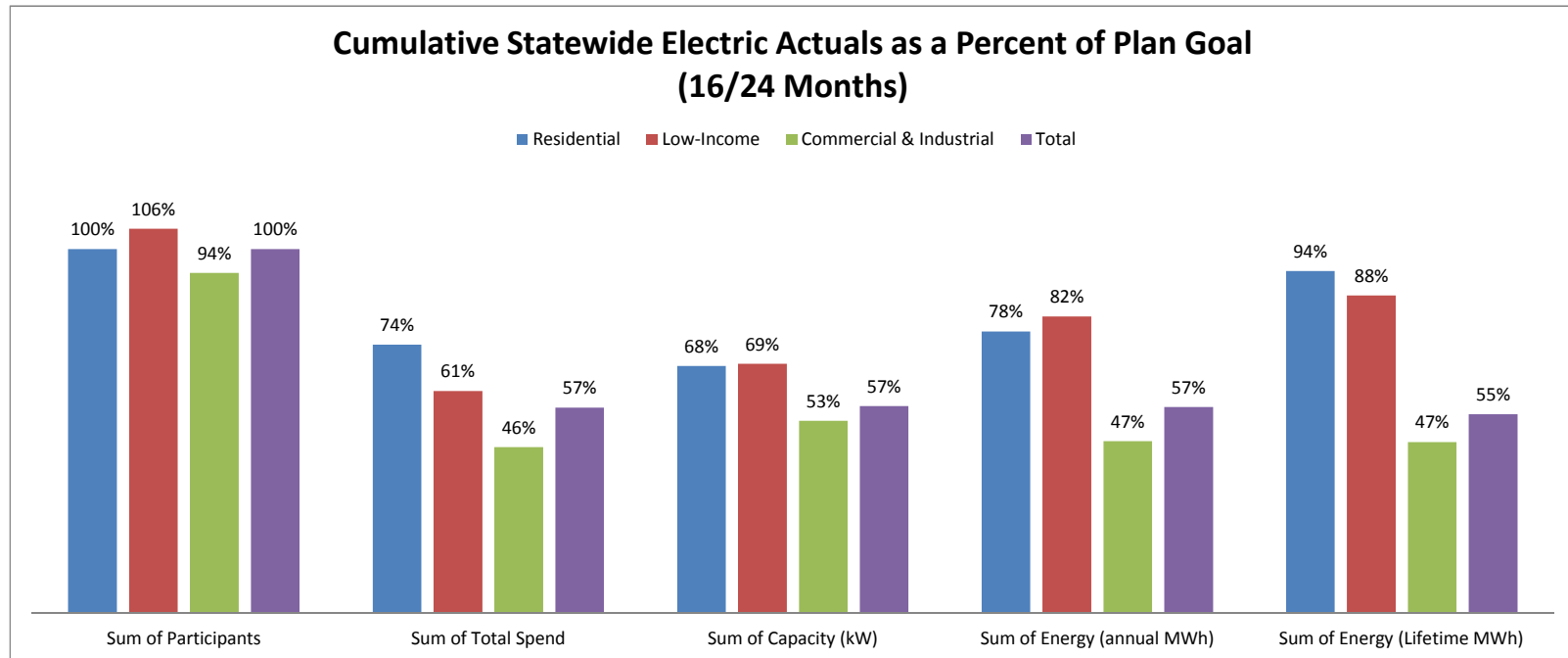
## JULY 2014 STATEWIDE ELECTRIC DATA DASHBOARD - FROM JAN 1, 2014 THROUGH MAY 31, 2014

Row Labels	Values				
	Sum of Participants	Sum of Total Spend	Sum of Capacity (kW)	Sum of Energy (annual MWh)	Sum of Energy (Lifetime MWh)
<b>Electric</b>					
<b>Goal</b>	<b>2,303,685</b>	<b>\$ 496,018,277</b>	<b>177,696</b>	<b>1,236,598</b>	<b>13,268,628</b>
Residential	2,259,817	\$ 162,852,400	45,584	364,571	1,952,344
Low-Income	27,488	\$ 54,923,703	3,246	27,759	260,056
Commercial & Industrial	16,380	\$ 278,242,174	128,866	844,268	11,056,228
<b>May YTD</b>	<b>1,752,191</b>	<b>126,714,449</b>	<b>47,761</b>	<b>312,020</b>	<b>2,800,331</b>
Residential	1,726,486	61,379,325	21,342	165,381	1,081,371
Low-Income	18,010	16,410,638	1,104	13,224	135,914
Commercial & Industrial	7,695	48,924,486	25,315	133,415	1,583,045
<b>YTD as % of goal</b>	<b>76%</b>	<b>26%</b>	<b>27%</b>	<b>25%</b>	<b>21%</b>
Residential	76%	38%	47%	45%	55%
Low-Income	66%	30%	34%	48%	52%
Commercial & Industrial	47%	18%	20%	16%	14%



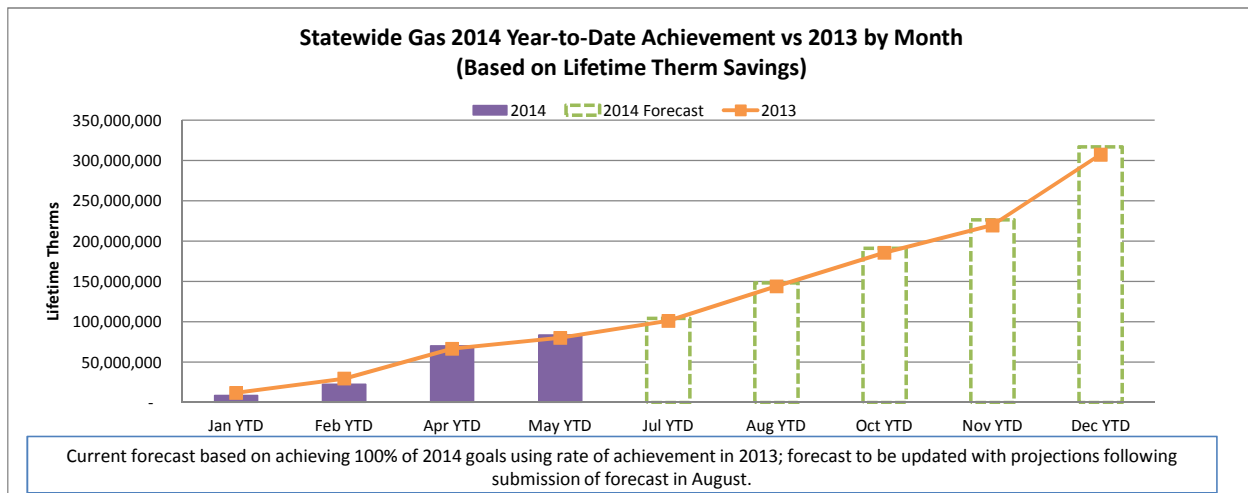
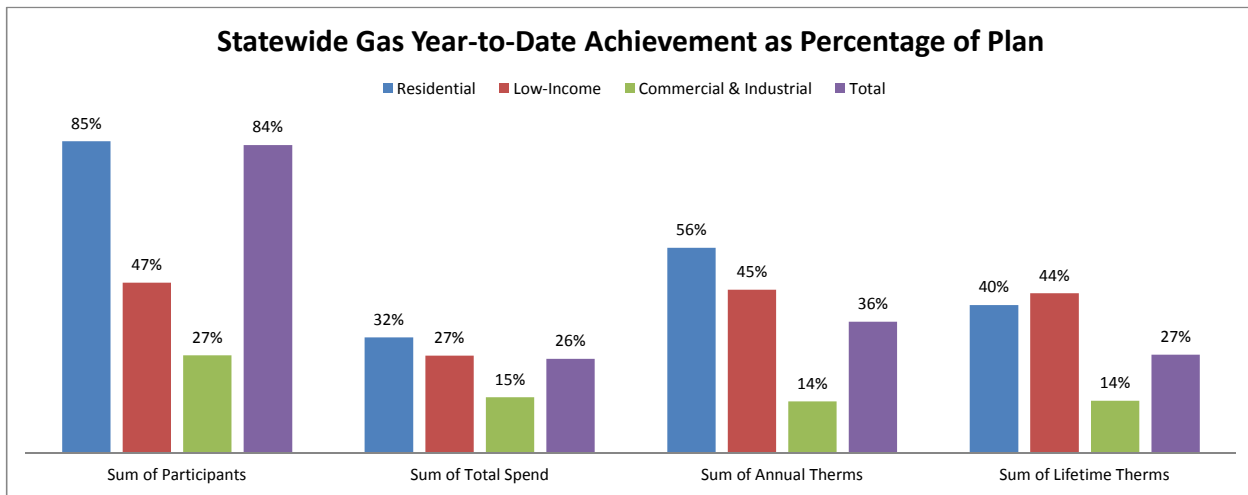
## CUMULATIVE STATEWIDE ELECTRIC DATA DASHBOARD - FROM JAN 1, 2013 THROUGH MAY 31, 2014 (17 / 24 MONTHS)

Row Labels	Values				
	Sum of Participants	Sum of Total Spend	Sum of Capacity (kW)	Sum of Energy (annual MWh)	Sum of Energy (Lifetime MWh)
<b>Electric</b>					
<b>Goal</b>	<b>4,508,565</b>	<b>\$ 977,881,110</b>	<b>351,047</b>	<b>2,431,784</b>	<b>26,415,256</b>
Residential	4,420,340	\$ 316,634,891	88,557	694,361	3,844,724
Low-Income	55,367	\$ 109,060,537	6,579	56,596	525,072
Commercial & Industrial	32,857	\$ 552,185,683	255,912	1,680,826	22,045,460
<b>May YTD</b>	<b>4,528,463</b>	<b>553,819,230</b>	<b>200,334</b>	<b>1,380,991</b>	<b>14,473,394</b>
Residential	4,438,893	234,487,473	60,336	539,268	3,629,355
Low-Income	58,734	66,744,502	4,520	46,298	460,130
Commercial & Industrial	30,836	252,587,255	135,479	795,425	10,383,910
<b>YTD as % of goal</b>	<b>100%</b>	<b>57%</b>	<b>57%</b>	<b>57%</b>	<b>55%</b>
Residential	100%	74%	68%	78%	94%
Low-Income	106%	61%	69%	82%	88%
Commercial & Industrial	94%	46%	53%	47%	47%



## JULY 2014 STATEWIDE GAS DATA DASHBOARD - FROM JAN 1, 2014 THROUGH MAY 31, 2014

Row Labels	Values			
	Sum of Participants	Sum of Total Spend	Sum of Annual Therms	Sum of Lifetime Therms
<b>Gas</b>				
<b>Goal</b>	<b>560,883</b>	<b>\$ 174,635,473</b>	<b>24,402,858</b>	<b>312,695,505</b>
Residential	549,030	\$ 86,902,669	11,607,811	119,006,291
Low-Income	6,840	\$ 35,928,339	1,439,072	28,354,752
Commercial & Industrial	5,014	\$ 51,804,465	11,355,975	165,334,462
<b>May YTD</b>	<b>472,197</b>	<b>44,781,433</b>	<b>8,734,710</b>	<b>83,857,434</b>
Residential	467,680	27,412,341	6,500,967	48,065,309
Low-Income	3,182	9,525,716	640,957	12,356,523
Commercial & Industrial	1,335	7,843,376	1,592,787	23,435,603
<b>YTD as % of goal</b>	<b>84%</b>	<b>26%</b>	<b>36%</b>	<b>27%</b>
Residential	85%	32%	56%	40%
Low-Income	47%	27%	45%	44%
Commercial & Industrial	27%	15%	14%	14%



## CUMULATIVE STATEWIDE GAS DATA DASHBOARD - FROM JAN 1, 2013 THROUGH MAY 31, 2014 (17 / 24 MONTHS)

Row Labels	Values			
	Sum of Participants	Sum of Total Spend	Sum of Annual Therms	Sum of Lifetime Therms
<b>Gas</b>				
<b>Goal</b>	<b>1,110,071</b>	<b>\$ 343,115,888</b>	<b>47,065,357</b>	<b>616,220,468</b>
Residential	1,086,719	\$ 171,688,550	21,898,593	235,619,595
Low-Income	13,484	\$ 70,337,314	2,836,815	55,869,681
Commercial & Industrial	9,868	\$ 101,090,025	22,329,948	324,731,192
May YTD	1,045,149	196,586,786	32,658,784	391,493,756
Residential	1,020,462	114,800,980	19,674,028	193,971,727
Low-Income	13,175	44,109,284	2,926,505	56,490,361
Commercial & Industrial	11,512	37,676,521	10,058,250	141,031,668
<b>YTD as % of goal</b>	<b>94%</b>	<b>57%</b>	<b>69%</b>	<b>64%</b>
Residential	94%	67%	90%	82%
Low-Income	98%	63%	103%	101%
Commercial & Industrial	117%	37%	45%	43%

