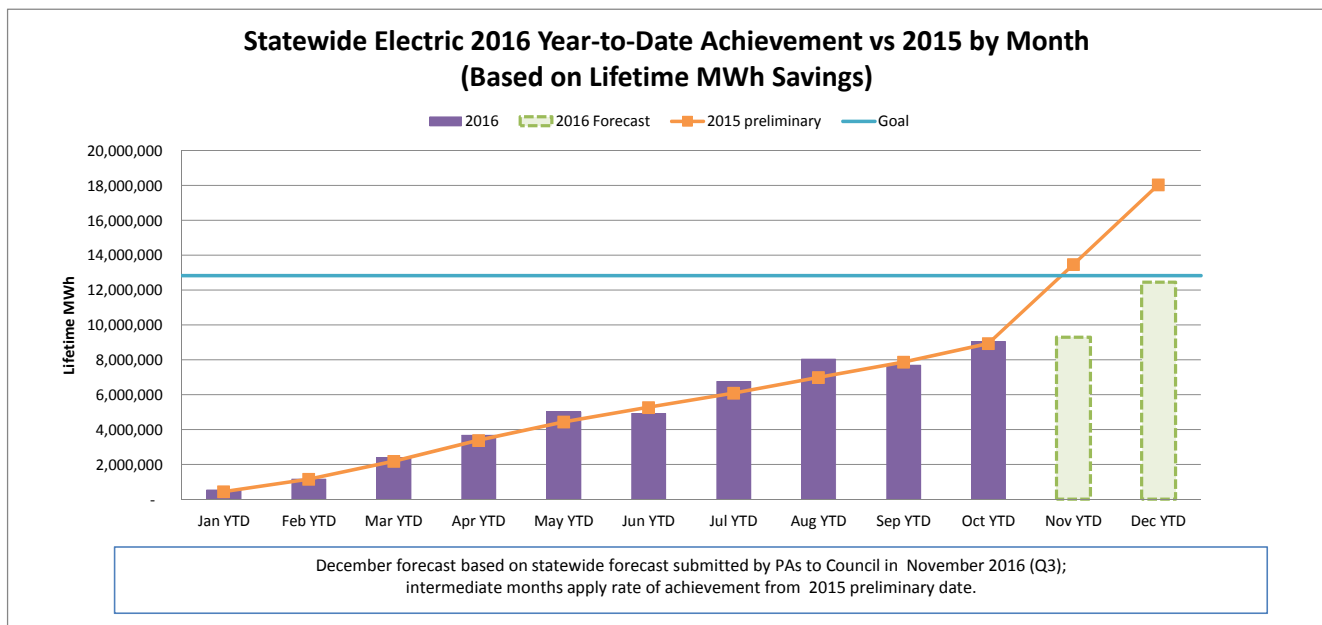
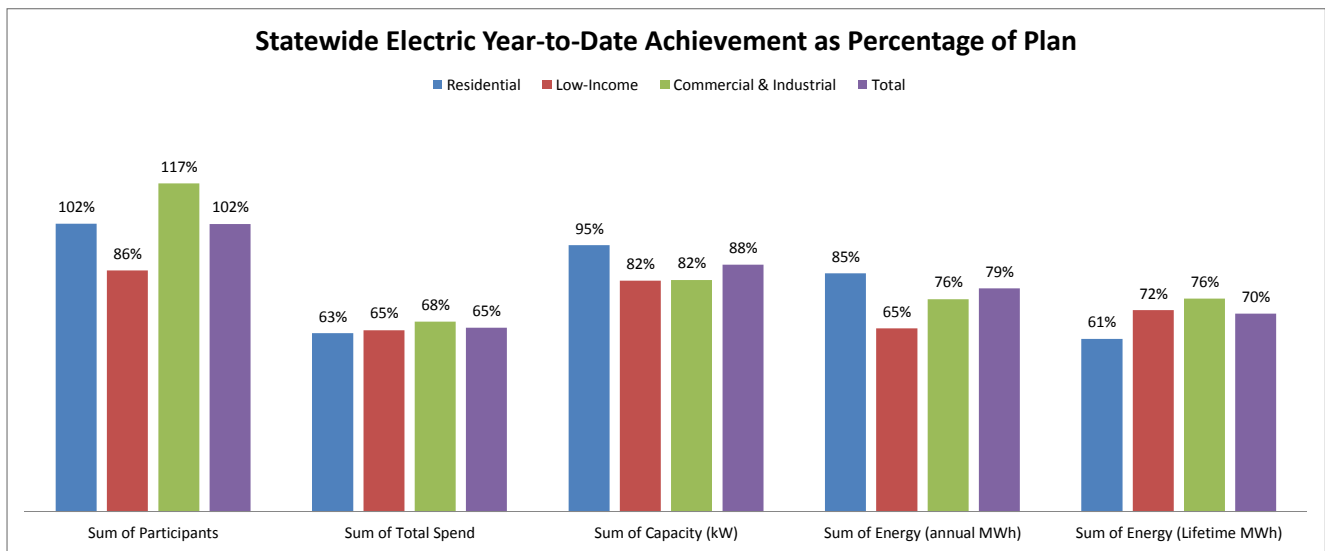


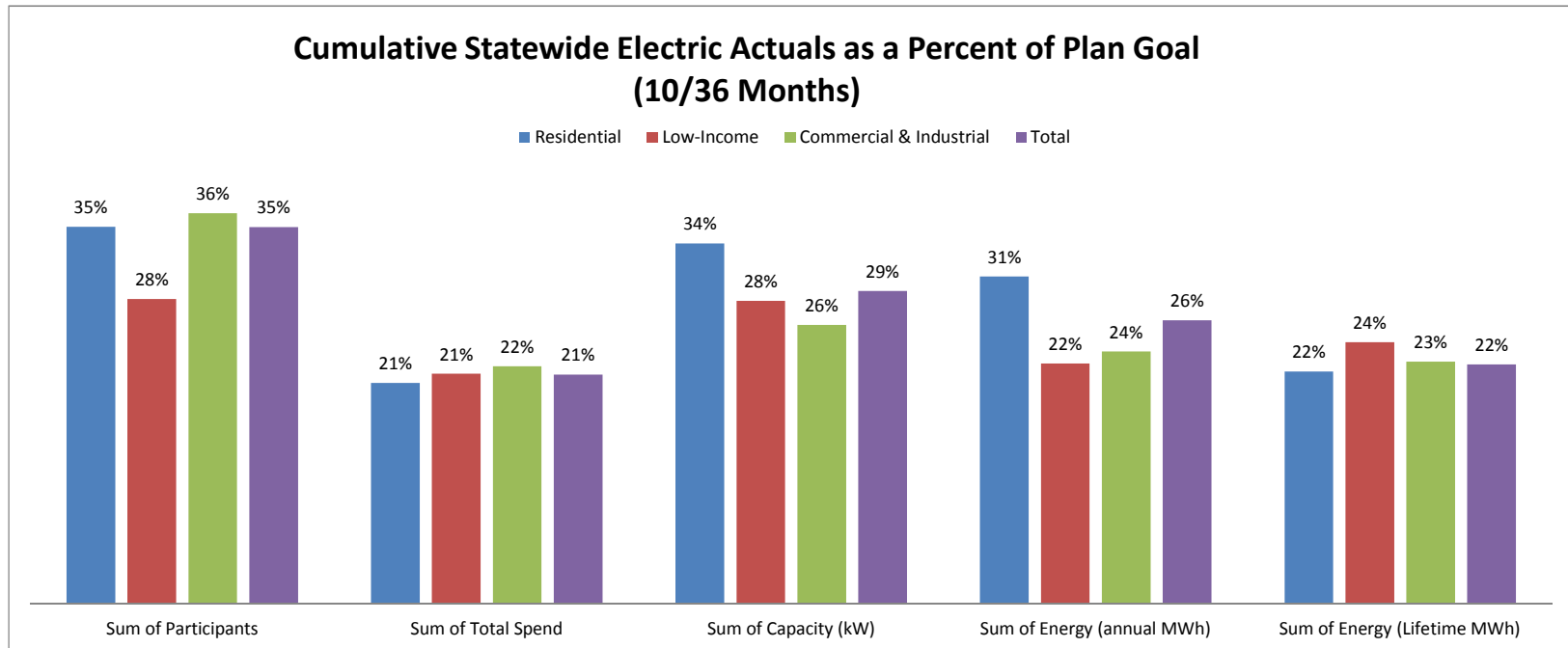
DECEMBER 2016 STATEWIDE ELECTRIC DATA DASHBOARD - FROM JAN 1, 2016 THROUGH OCT 31, 2016

Row Labels	Values				
	Sum of Participants	Sum of Total Spend	Sum of Capacity (kW)	Sum of Energy (annual MWh)	Sum of Energy (Lifetime MWh)
Electric					
Goal	3,750,058	\$ 599,092,724	192,033	1,372,871	12,834,066
Residential	3,695,475	262,032,395	83,864	627,510	4,695,770
Low-Income	31,829	67,636,035	4,847	40,560	354,191
Commercial & Industrial	22,754	269,424,294	103,322	704,801	7,784,105
Oct YTD	3,836,298	392,382,106	168,613	1,091,228	9,039,496
Residential	3,782,439	166,376,921	79,464	531,947	2,886,314
Low-Income	27,311	43,683,851	3,984	26,462	254,005
Commercial & Industrial	26,548	182,321,334	85,165	532,820	5,899,177
YTD as % of goal	102%	65%	88%	79%	70%
Residential	102%	63%	95%	85%	61%
Low-Income	86%	65%	82%	65%	72%
Commercial & Industrial	117%	68%	82%	76%	76%



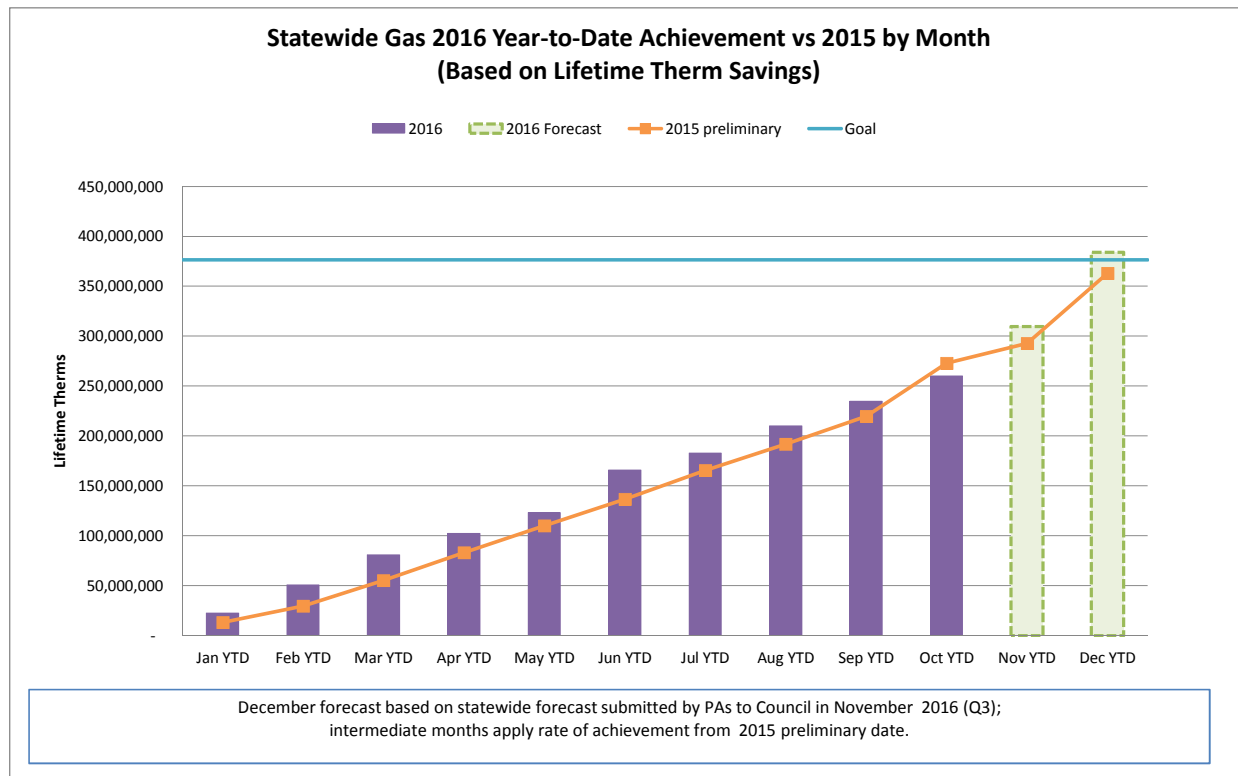
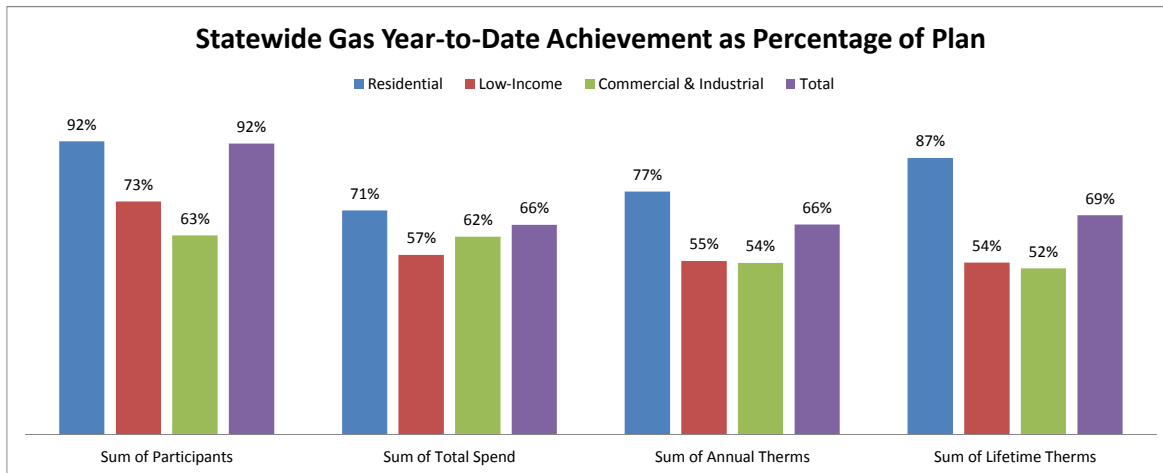
CUMULATIVE STATEWIDE ELECTRIC DATA DASHBOARD - FROM JAN 1, 2016 THROUGH OCT 31, 2016 (10/36 MONTHS)

Row Labels	Values				
	Sum of Participants	Sum of Total Spend	Sum of Capacity (kW)	Sum of Energy (annual MWh)	Sum of Energy (Lifetime MWh)
Electric					
Goal	10,905,877	\$ 1,834,538,576	577,296	4,122,145	40,483,538
Residential	10,737,170	\$ 807,804,353	236,134	1,740,656	13,323,450
Low-Income	95,967	\$ 203,573,751	14,079	117,973	1,039,872
Commercial & Industrial	72,740	\$ 823,160,472	327,083	2,263,516	26,120,216
Oct YTD	3,836,298	392,382,106	168,613	1,091,228	9,039,496
Residential	3,782,439	166,376,921	79,464	531,947	2,886,314
Low-Income	27,311	43,683,851	3,984	26,462	254,005
Commercial & Industrial	26,548	182,321,334	85,165	532,820	5,899,177
YTD as % of goal	35%	21%	29%	26%	22%
Residential	35%	21%	34%	31%	22%
Low-Income	28%	21%	28%	22%	24%
Commercial & Industrial	36%	22%	26%	24%	23%



DECEMBER 2016 STATEWIDE GAS DATA DASHBOARD - FROM JAN 1, 2016 THROUGH OCT 31, 2016

Row Labels	Values			
	Sum of Participants	Sum of Total Spend	Sum of Annual Therms	Sum of Lifetime Therms
Gas				
Goal	587,136	\$ 217,209,003	28,094,852	376,308,951
Residential	570,157	\$ 128,442,097	15,104,655	179,262,960
Low-Income	10,696	\$ 44,617,918	2,054,910	40,776,120
Commercial & Industrial	6,283	\$ 44,148,988	10,935,287	156,269,871
Oct YTD	538,604	143,505,377	18,606,498	260,174,624
Residential	526,808	90,719,729	11,572,001	156,189,239
Low-Income	7,853	25,270,231	1,123,842	22,084,970
Commercial & Industrial	3,943	27,515,417	5,910,655	81,900,414
YTD as % of goal	92%	66%	66%	69%
Residential	92%	71%	77%	87%
Low-Income	73%	57%	55%	54%
Commercial & Industrial	63%	62%	54%	52%



CUMULATIVE STATEWIDE GAS DATA DASHBOARD - FROM JAN 1, 2016 THROUGH OCT 31, 2016 (10/36 MONTHS)

Row Labels	Values			
	Sum of Participants	Sum of Total Spend	Sum of Annual Therms	Sum of Lifetime Therms
Gas				
Goal	1,761,720	\$ 666,852,036	85,809,615	1,149,211,385
Residential	1,709,969	\$ 395,557,580	45,811,091	549,588,367
Low-Income	32,276	\$ 135,400,869	6,192,804	122,879,252
Commercial & Industrial	19,475	\$ 135,893,587	33,805,720	476,743,766
Oct YTD	538,604	143,505,377	18,606,498	260,174,624
Residential	526,808	90,719,729	11,572,001	156,189,239
Low-Income	7,853	25,270,231	1,123,842	22,084,970
Commercial & Industrial	3,943	27,515,417	5,910,655	81,900,414
YTD as % of goal	31%	22%	22%	23%
Residential	31%	23%	25%	28%
Low-Income	24%	19%	18%	18%
Commercial & Industrial	20%	20%	17%	17%

