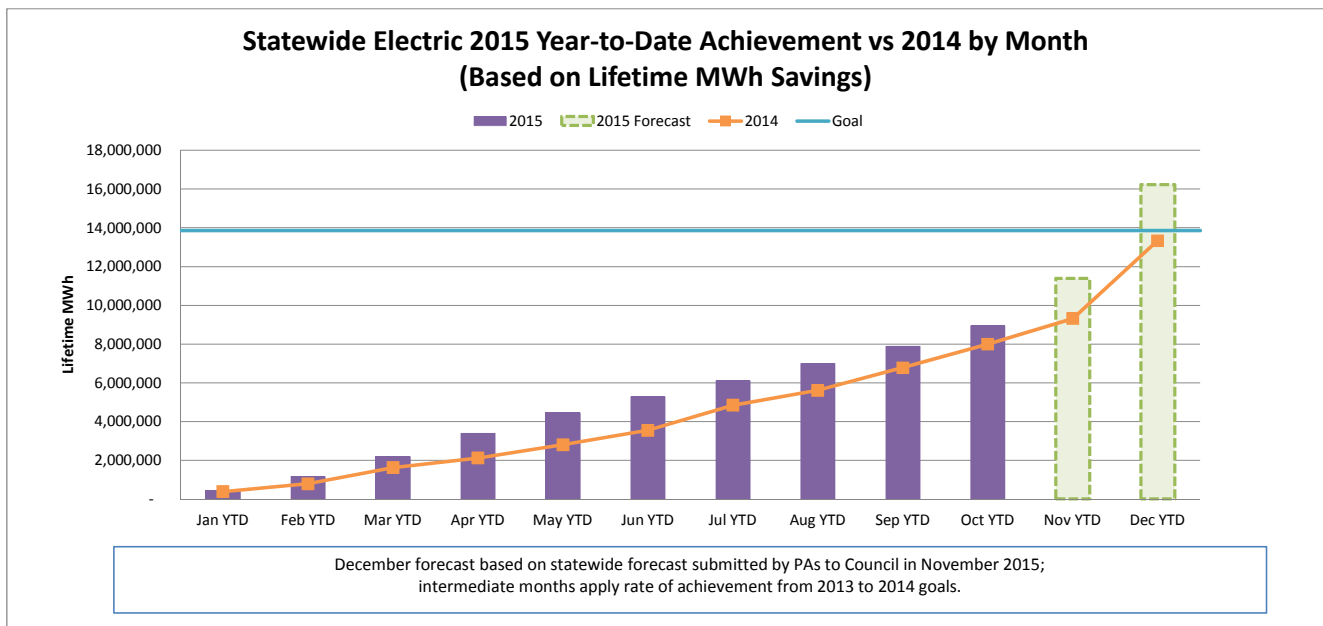
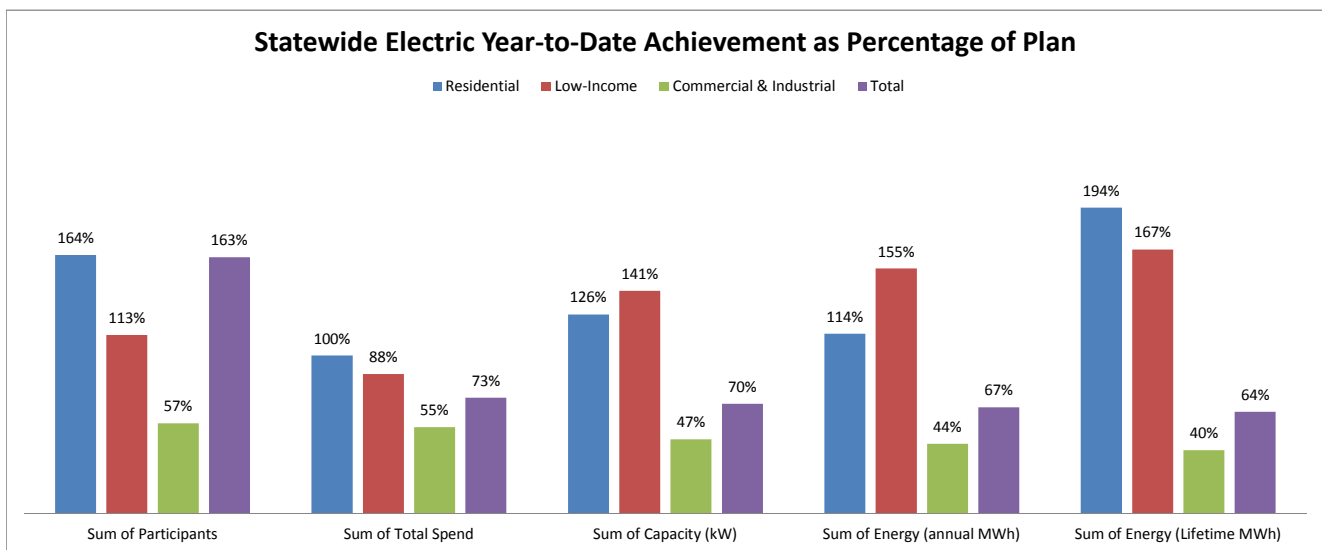


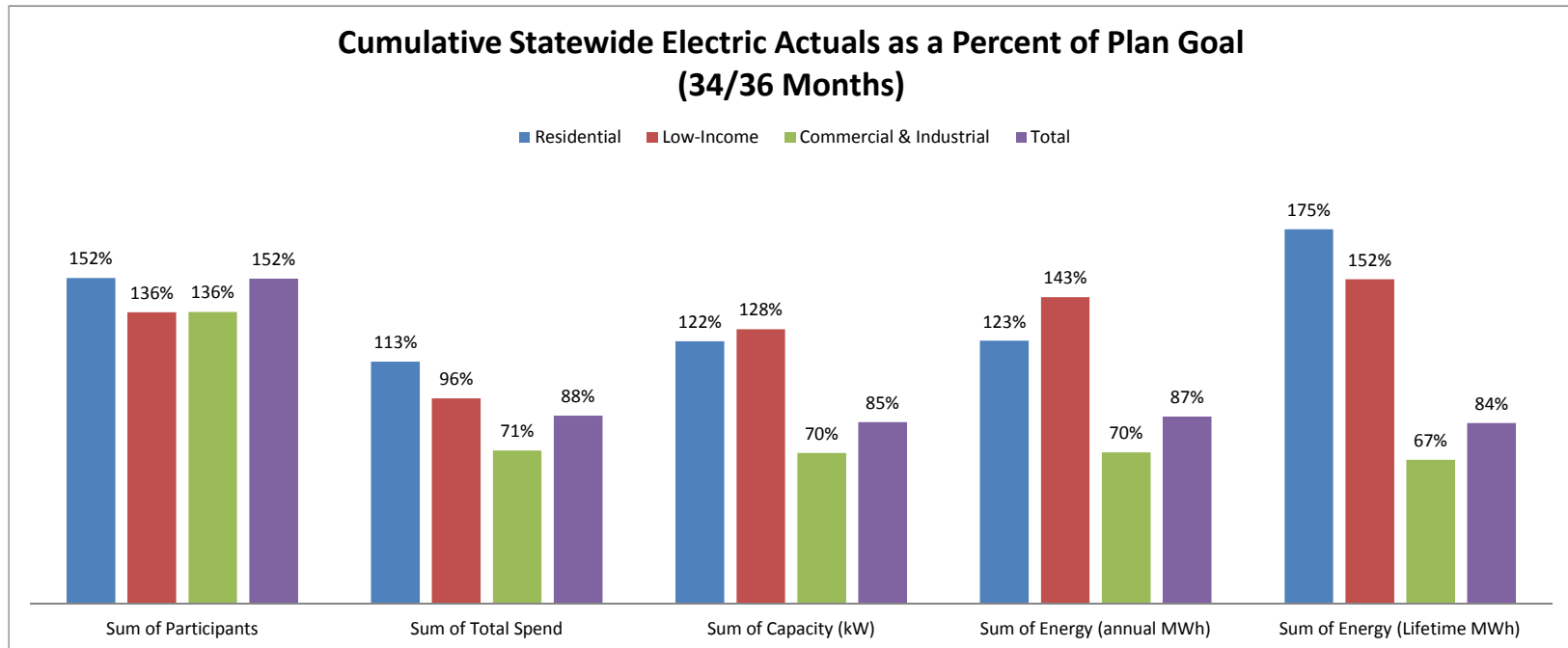
## DECEMBER 2015 STATEWIDE ELECTRIC DATA DASHBOARD - FROM JAN 1, 2015 THROUGH OCT 31, 2015

Row Labels	Values				
	Sum of Participants	Sum of Total Spend	Sum of Capacity (kW)	Sum of Energy (annual MWh)	Sum of Energy (Lifetime MWh)
<b>Electric</b>					
<b>Goal</b>	<b>2,350,053</b>	<b>\$ 519,094,445</b>	<b>179,573</b>	<b>1,274,646</b>	<b>13,863,794</b>
Residential	2,306,350	171,322,993	47,313	380,446	1,985,572
Low-Income	27,106	56,913,127	3,245	26,794	254,311
Commercial & Industrial	16,597	290,858,324	129,015	867,407	11,623,911
<b>Oct YTD</b>	<b>3,821,208</b>	<b>381,511,434</b>	<b>124,975</b>	<b>858,688</b>	<b>8,934,295</b>
Residential	3,781,025	171,592,137	59,744	433,980	3,851,692
Low-Income	30,672	50,345,313	4,584	41,652	425,958
Commercial & Industrial	9,511	159,573,984	60,647	383,056	4,656,645
<b>YTD as % of goal</b>	<b>163%</b>	<b>73%</b>	<b>70%</b>	<b>67%</b>	<b>64%</b>
Residential	164%	100%	126%	114%	194%
Low-Income	113%	88%	141%	155%	167%
Commercial & Industrial	57%	55%	47%	44%	40%



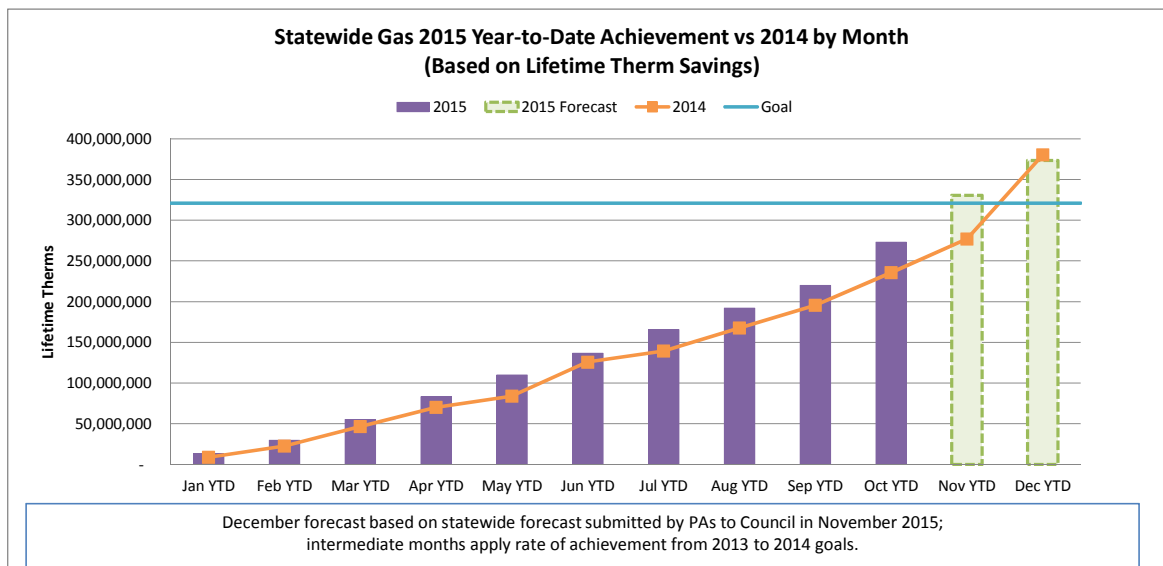
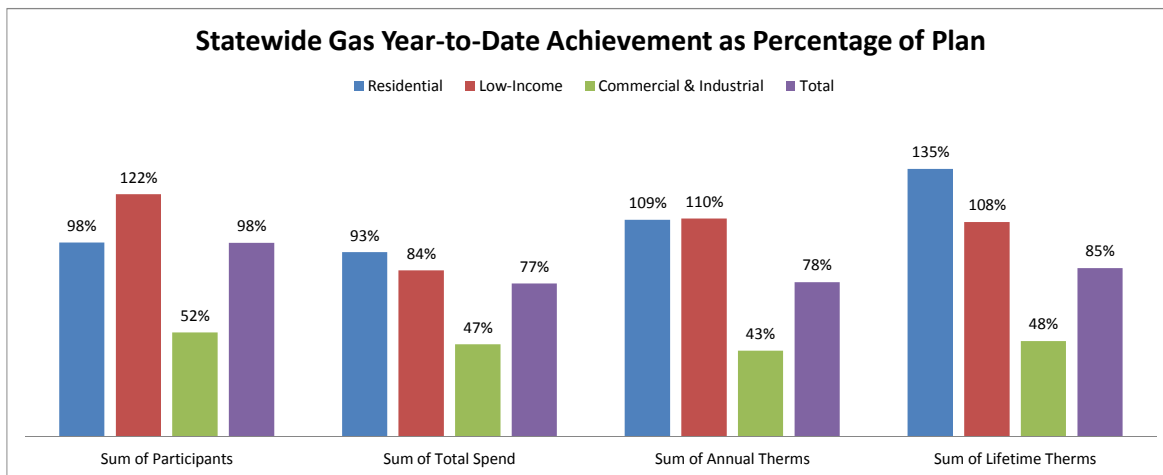
## CUMULATIVE STATEWIDE ELECTRIC DATA DASHBOARD - FROM JAN 1, 2013 THROUGH OCT 31, 2015 (34/36 MONTHS)

Row Labels	Values				
	Sum of Participants	Sum of Total Spend	Sum of Capacity (kW)	Sum of Energy (annual MWh)	Sum of Energy (Lifetime MWh)
<b>Electric</b>					
<b>Goal</b>	<b>6,858,617</b>	<b>\$ 1,496,975,555</b>	<b>530,620</b>	<b>3,706,430</b>	<b>40,279,050</b>
Residential	6,726,690	\$ 487,957,884	135,870	1,074,808	5,830,296
Low-Income	82,473	\$ 165,973,664	9,824	83,390	779,383
Commercial & Industrial	49,454	\$ 843,044,007	384,927	2,548,233	33,669,371
<b>Oct YTD</b>	<b>10,413,902</b>	<b>1,312,370,111</b>	<b>449,527</b>	<b>3,234,466</b>	<b>33,947,062</b>
Residential	10,234,310	551,451,611	166,421	1,319,242	10,196,520
Low-Income	112,207	159,037,593	12,595	119,414	1,181,355
Commercial & Industrial	67,385	601,880,907	270,511	1,795,810	22,569,187
<b>YTD as % of goal</b>	<b>152%</b>	<b>88%</b>	<b>85%</b>	<b>87%</b>	<b>84%</b>
Residential	152%	113%	122%	123%	175%
Low-Income	136%	96%	128%	143%	152%
Commercial & Industrial	136%	71%	70%	70%	67%



## DECEMBER 2015 STATEWIDE GAS DATA DASHBOARD - FROM JAN 1, 2015 THROUGH OCT 31, 2015

Row Labels	Values			
	Sum of Participants	Sum of Total Spend	Sum of Annual Therms	Sum of Lifetime Therms
<b>Gas</b>				
<b>Goal</b>	<b>572,755</b>	<b>\$ 180,154,149</b>	<b>24,951,086</b>	<b>320,982,390</b>
Residential	560,561	\$ 88,771,674	11,605,486	115,703,917
Low-Income	7,009	\$ 37,843,984	1,486,113	29,327,842
Commercial & Industrial	5,185	\$ 53,538,491	11,859,487	175,950,631
Oct YTD	559,357	139,135,557	19,434,126	272,767,596
Residential	548,070	82,496,115	12,675,215	156,206,325
Low-Income	8,568	31,726,633	1,632,748	31,746,454
Commercial & Industrial	2,719	24,912,809	5,126,163	84,814,817
<b>YTD as % of goal</b>	<b>98%</b>	<b>77%</b>	<b>78%</b>	<b>85%</b>
Residential	98%	93%	109%	135%
Low-Income	122%	84%	110%	108%
Commercial & Industrial	52%	47%	43%	48%



## CUMULATIVE STATEWIDE GAS DATA DASHBOARD - FROM JAN 1, 2013 THROUGH OCT 31, 2015 (34/36 MONTHS )

Row Labels	Values			
	Sum of Participants	Sum of Total Spend	Sum of Annual Therms	Sum of Lifetime Therms
<b>Gas</b>				
<b>Goal</b>	<b>1,682,827</b>	<b>\$ 523,270,037</b>	<b>72,016,443</b>	<b>937,202,858</b>
Residential	1,647,280	\$ 260,460,223	33,504,079	351,323,512
Low-Income	20,494	\$ 108,181,298	4,322,929	85,197,523
Commercial & Industrial	15,053	\$ 154,628,516	34,189,435	500,681,823
Oct YTD	1,676,803	456,837,411	71,604,862	960,674,104
Residential	1,635,886	263,255,736	40,981,079	476,717,113
Low-Income	29,294	104,608,095	6,549,744	126,969,990
Commercial & Industrial	11,623	88,973,580	24,074,040	356,987,001
<b>YTD as % of goal</b>	<b>100%</b>	<b>87%</b>	<b>99%</b>	<b>103%</b>
Residential	99%	101%	122%	136%
Low-Income	143%	97%	152%	149%
Commercial & Industrial	77%	58%	70%	71%

