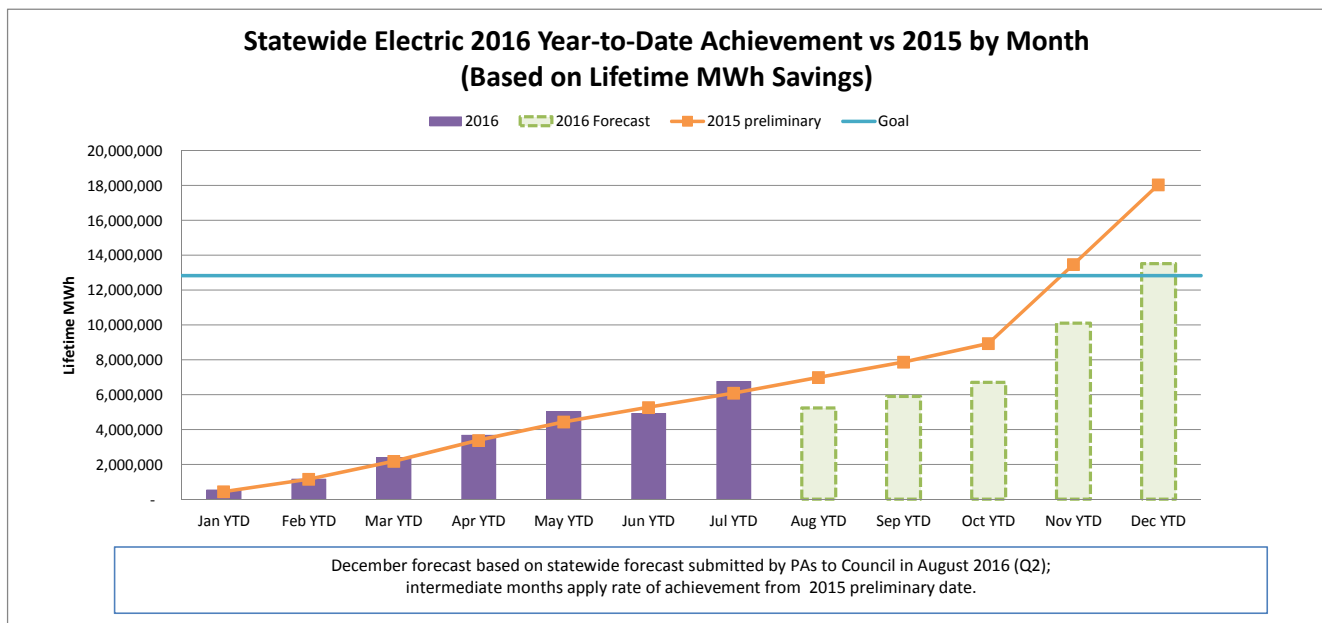
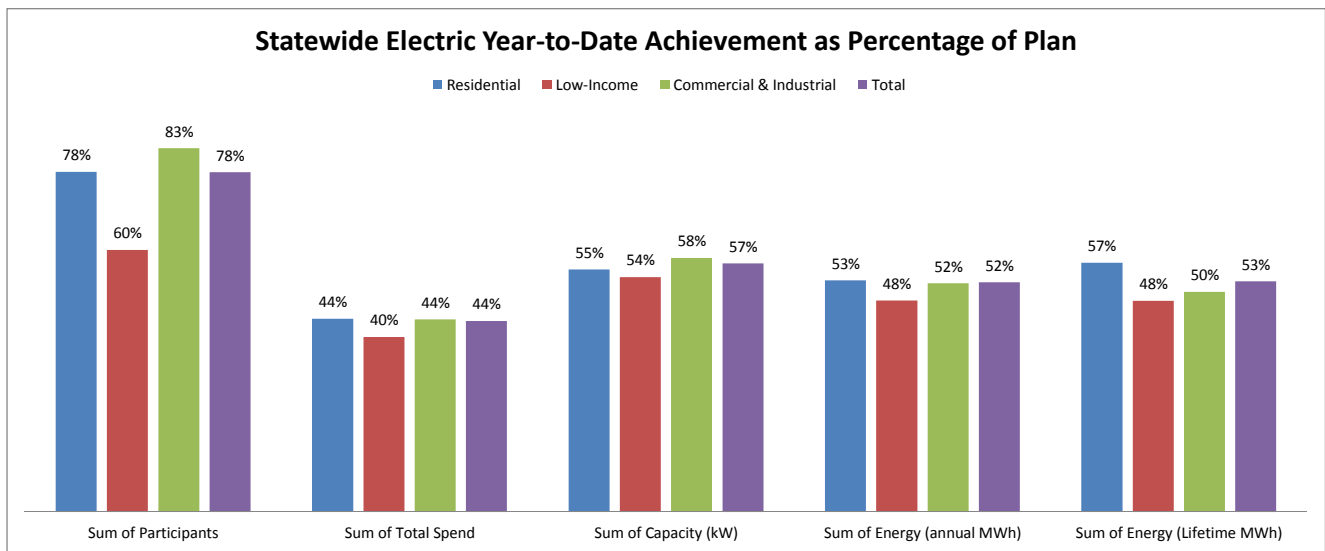


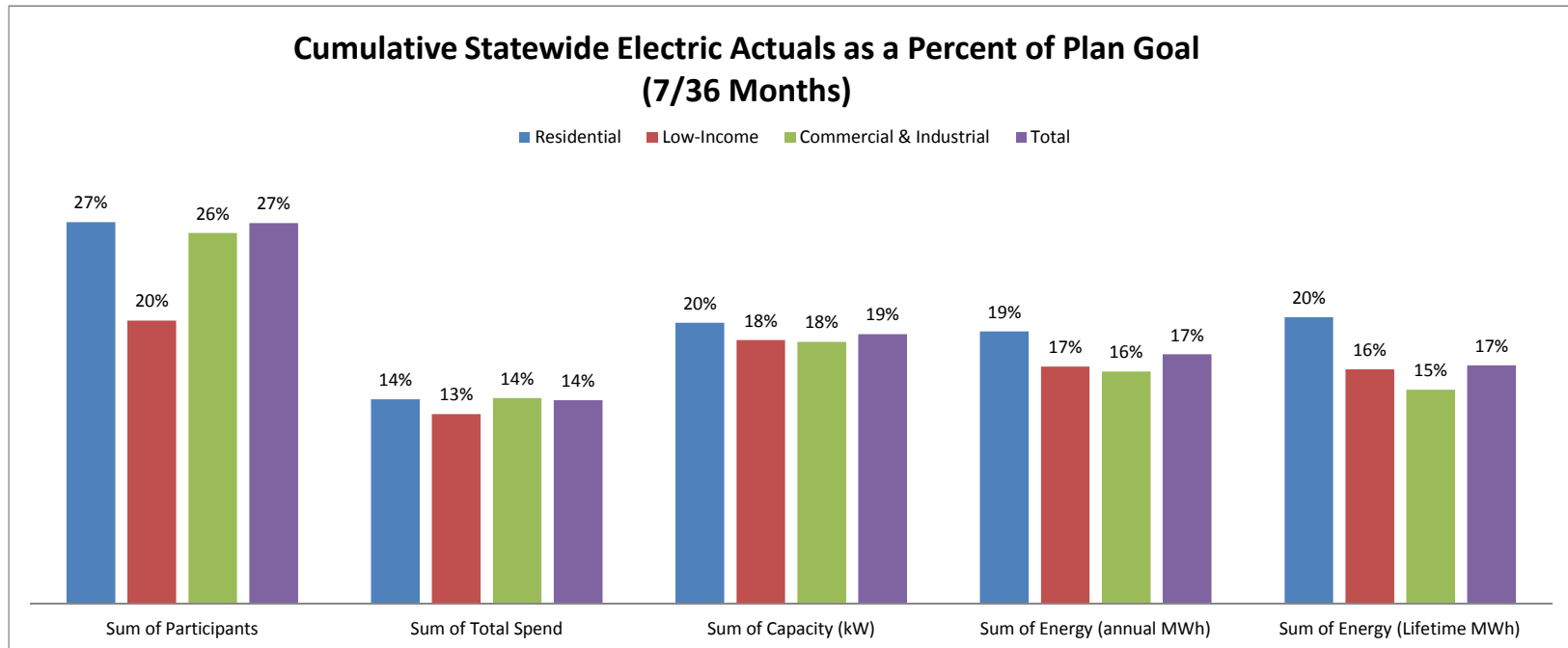
SEPTEMBER 2016 STATEWIDE ELECTRIC DATA DASHBOARD - FROM JAN 1, 2016 THROUGH JUL 31, 2016

Row Labels	Values				
	Sum of Participants	Sum of Total Spend	Sum of Capacity (kW)	Sum of Energy (annual MWh)	Sum of Energy (Lifetime MWh)
Electric					
Goal	3,750,058	\$ 599,092,724	192,033	1,372,871	12,834,066
Residential	3,695,475	262,032,395	83,864	627,510	4,695,770
Low-Income	31,829	67,636,035	4,847	40,560	354,191
Commercial & Industrial	22,754	269,424,294	103,322	704,801	7,784,105
Jul YTD	2,908,674	261,143,011	108,986	719,669	6,759,259
Residential	2,870,737	115,609,883	46,438	332,030	2,673,761
Low-Income	19,035	27,022,403	2,600	19,595	170,699
Commercial & Industrial	18,902	118,510,724	59,949	368,044	3,914,800
YTD as % of goal	78%	44%	57%	52%	53%
Residential	78%	44%	55%	53%	57%
Low-Income	60%	40%	54%	48%	48%
Commercial & Industrial	83%	44%	58%	52%	50%



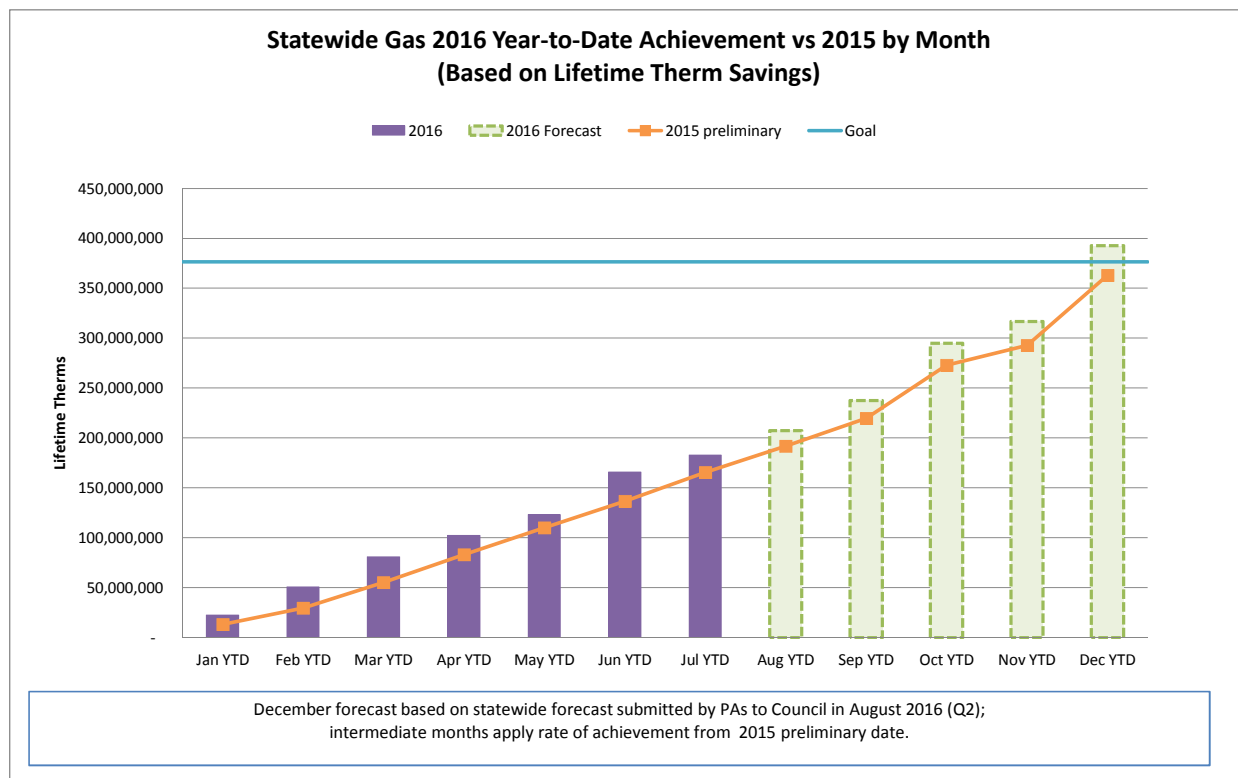
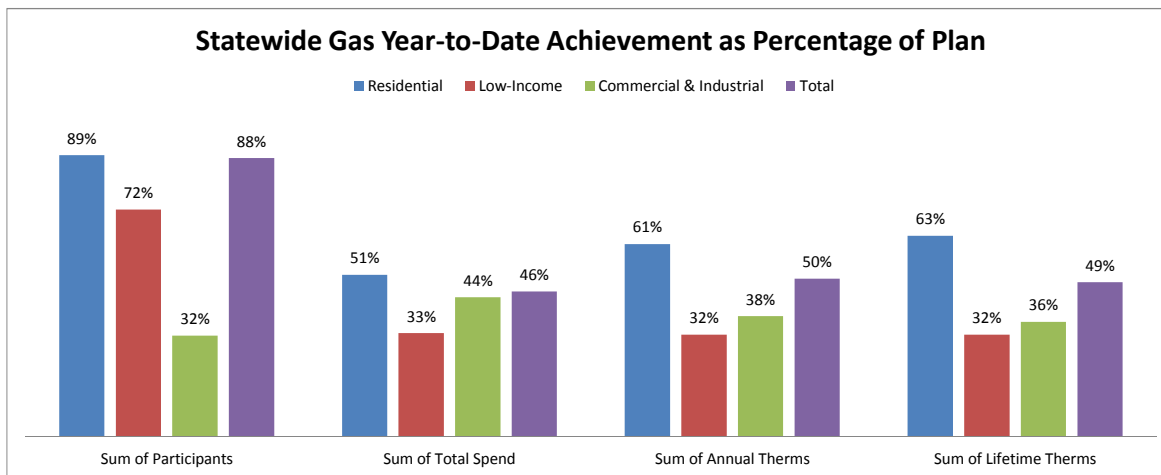
CUMULATIVE STATEWIDE ELECTRIC DATA DASHBOARD - FROM JAN 1, 2016 THROUGH JUL 31, 2016 (7/36 MONTHS)

Row Labels	Values				
	Sum of Participants	Sum of Total Spend	Sum of Capacity (kW)	Sum of Energy (annual MWh)	Sum of Energy (Lifetime MWh)
Electric					
Goal	10,905,877	\$ 1,834,538,576	577,296	4,122,145	40,483,538
Residential	10,737,170	\$ 807,804,353	236,134	1,740,656	13,323,450
Low-Income	95,967	\$ 203,573,751	14,079	117,973	1,039,872
Commercial & Industrial	72,740	\$ 823,160,472	327,083	2,263,516	26,120,216
Jul YTD	2,908,674	261,143,011	108,986	719,669	6,759,259
Residential	2,870,737	115,609,883	46,438	332,030	2,673,761
Low-Income	19,035	27,022,403	2,600	19,595	170,699
Commercial & Industrial	18,902	118,510,724	59,949	368,044	3,914,800
YTD as % of goal	27%	14%	19%	17%	17%
Residential	27%	14%	20%	19%	20%
Low-Income	20%	13%	18%	17%	16%
Commercial & Industrial	26%	14%	18%	16%	15%



SEPTEMBER 2016 STATEWIDE GAS DATA DASHBOARD - FROM JAN 1, 2016 THROUGH JUL 31, 2016

Row Labels	Values			
	Sum of Participants	Sum of Total Spend	Sum of Annual Therms	Sum of Lifetime Therms
Gas				
Goal	587,136	\$ 217,209,003	28,094,852	376,308,951
Residential	570,157	\$ 128,442,097	15,104,655	179,262,960
Low-Income	10,696	\$ 44,617,918	2,054,910	40,776,120
Commercial & Industrial	6,283	\$ 44,148,988	10,935,287	156,269,871
Jul YTD	515,269	99,384,202	13,971,590	182,949,043
Residential	505,620	65,466,406	9,166,873	113,373,125
Low-Income	7,648	14,555,517	658,767	13,096,450
Commercial & Industrial	2,001	19,362,279	4,145,950	56,479,468
YTD as % of goal	88%	46%	50%	49%
Residential	89%	51%	61%	63%
Low-Income	72%	33%	32%	32%
Commercial & Industrial	32%	44%	38%	36%



CUMULATIVE STATEWIDE GAS DATA DASHBOARD - FROM JAN 1, 2016 THROUGH JUL 31, 2016 (7/36 MONTHS)

Row Labels	Values			
	Sum of Participants	Sum of Total Spend	Sum of Annual Therms	Sum of Lifetime Therms
Gas				
Goal	1,761,720	\$ 666,852,036	85,809,615	1,149,211,385
Residential	1,709,969	\$ 395,557,580	45,811,091	549,588,367
Low-Income	32,276	\$ 135,400,869	6,192,804	122,879,252
Commercial & Industrial	19,475	\$ 135,893,587	33,805,720	476,743,766
Jul YTD	515,269	99,384,202	13,971,590	182,949,043
Residential	505,620	65,466,406	9,166,873	113,373,125
Low-Income	7,648	14,555,517	658,767	13,096,450
Commercial & Industrial	2,001	19,362,279	4,145,950	56,479,468
YTD as % of goal	29%	15%	16%	16%
Residential	30%	17%	20%	21%
Low-Income	24%	11%	11%	11%
Commercial & Industrial	10%	14%	12%	12%

