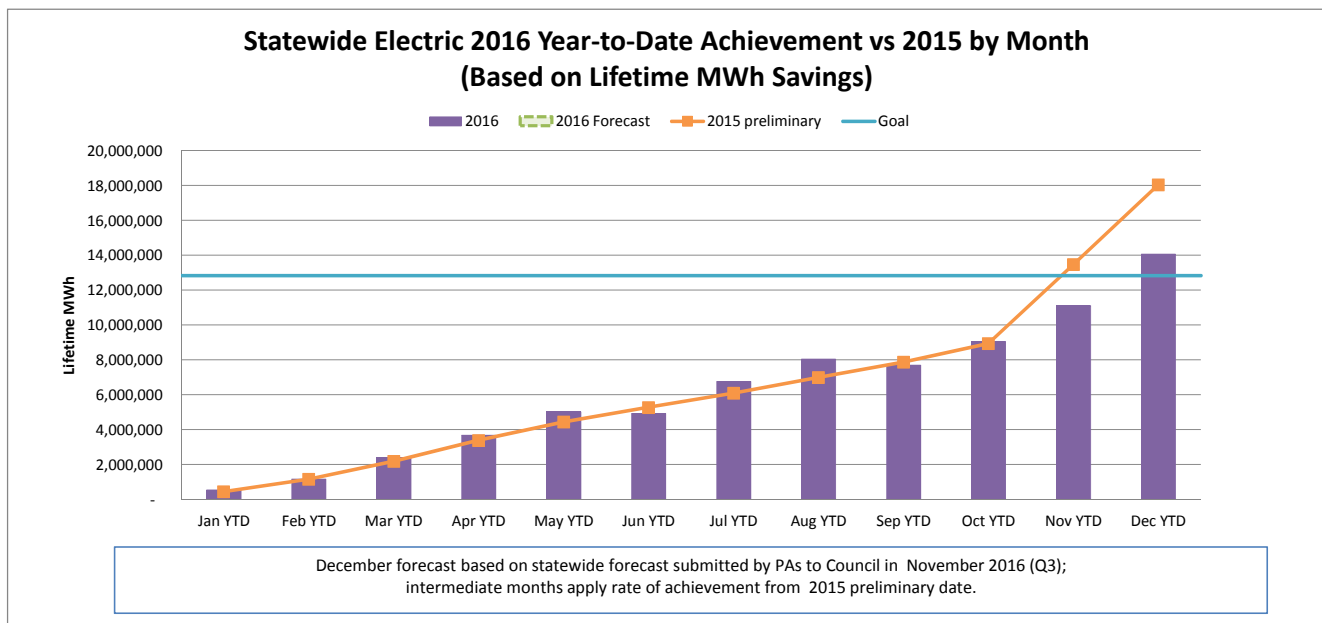
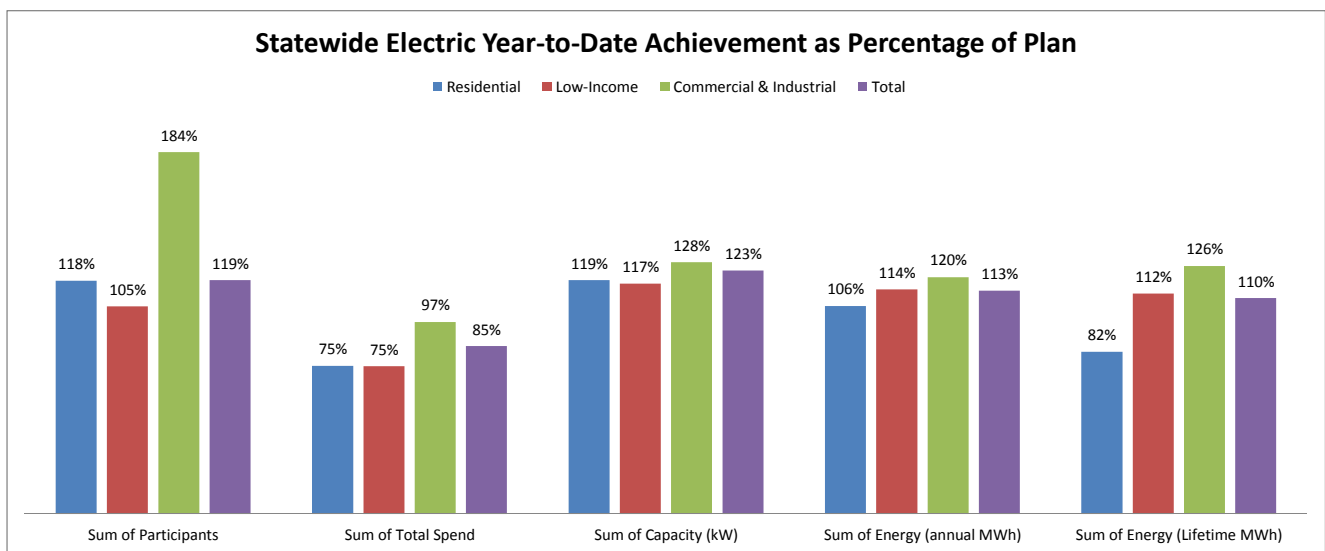


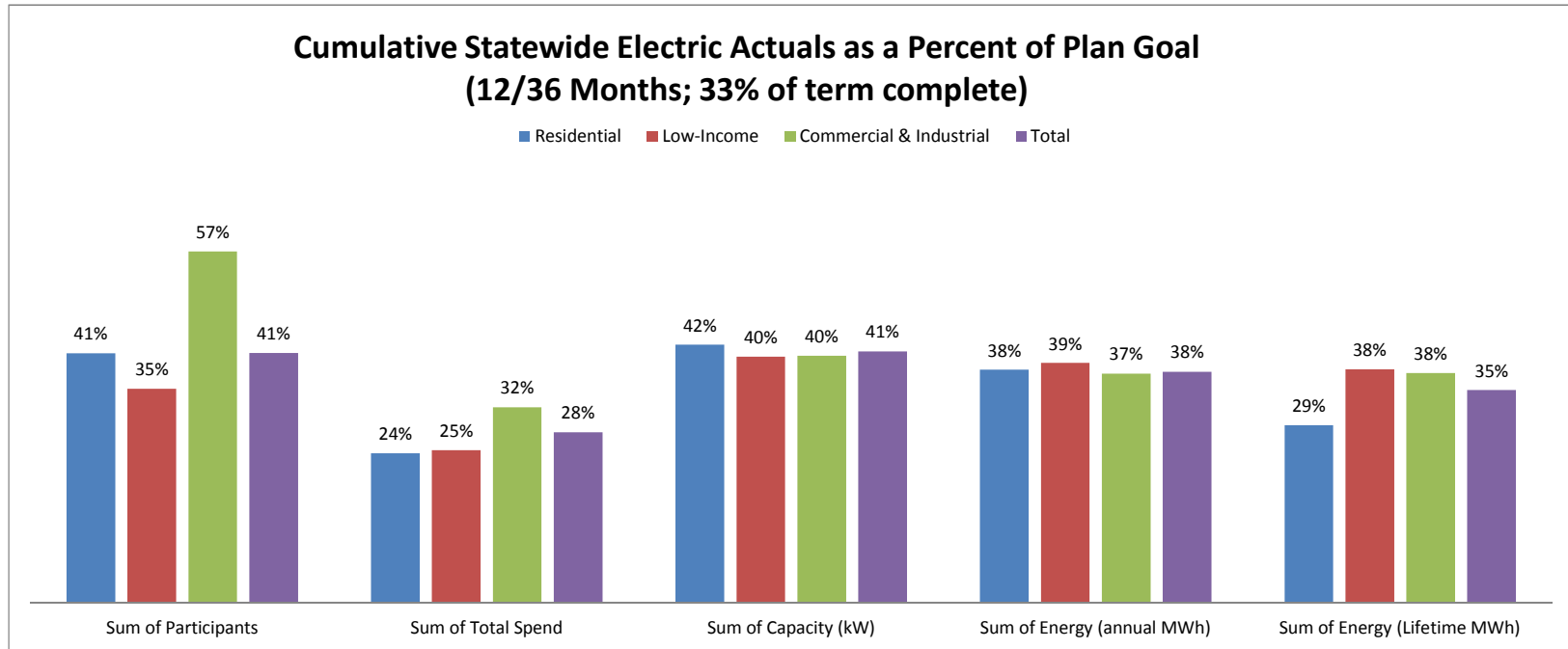
## FEBRUARY 2017 STATEWIDE ELECTRIC DATA DASHBOARD - FROM JAN 1, 2016 THROUGH DEC 31, 2016

Row Labels	Values				
	Sum of Participants	Sum of Total Spend	Sum of Capacity (kW)	Sum of Energy (annual MWh)	Sum of Energy (Lifetime MWh)
<b>Electric</b>					
<b>Goal</b>	<b>3,750,058</b>	<b>\$ 599,092,724</b>	<b>192,033</b>	<b>1,372,871</b>	<b>12,834,066</b>
Residential	3,695,475	262,032,395	83,864	627,510	4,695,770
Low-Income	31,829	67,636,035	4,847	40,560	354,191
Commercial & Industrial	22,754	269,424,294	103,322	704,801	7,784,105
<b>Dec YTD</b>	<b>4,450,646</b>	<b>510,319,551</b>	<b>237,140</b>	<b>1,556,019</b>	<b>14,056,410</b>
Residential	4,375,349	197,011,636	99,534	662,469	3,861,352
Low-Income	33,513	50,718,644	5,662	46,209	396,234
Commercial & Industrial	41,784	262,589,271	131,943	847,341	9,798,824
<b>YTD as % of goal</b>	<b>119%</b>	<b>85%</b>	<b>123%</b>	<b>113%</b>	<b>110%</b>
Residential	118%	75%	119%	106%	82%
Low-Income	105%	75%	117%	114%	112%
Commercial & Industrial	184%	97%	128%	120%	126%



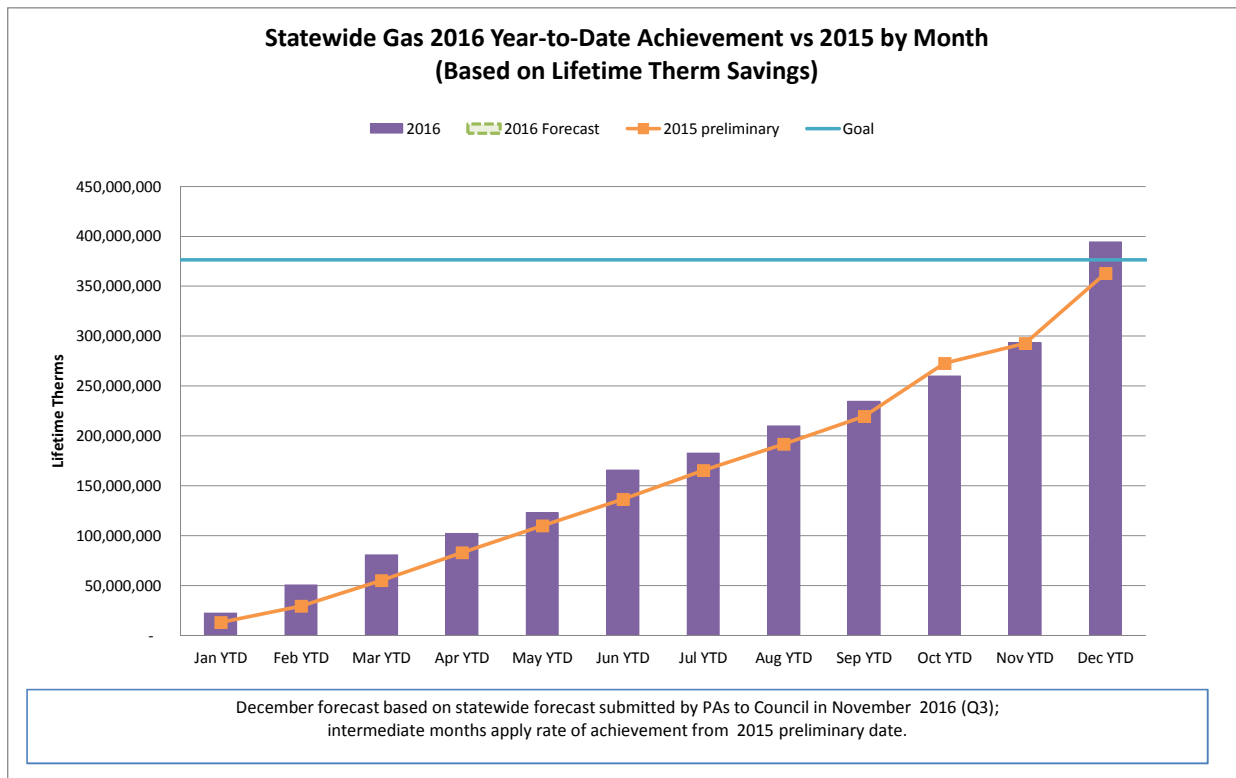
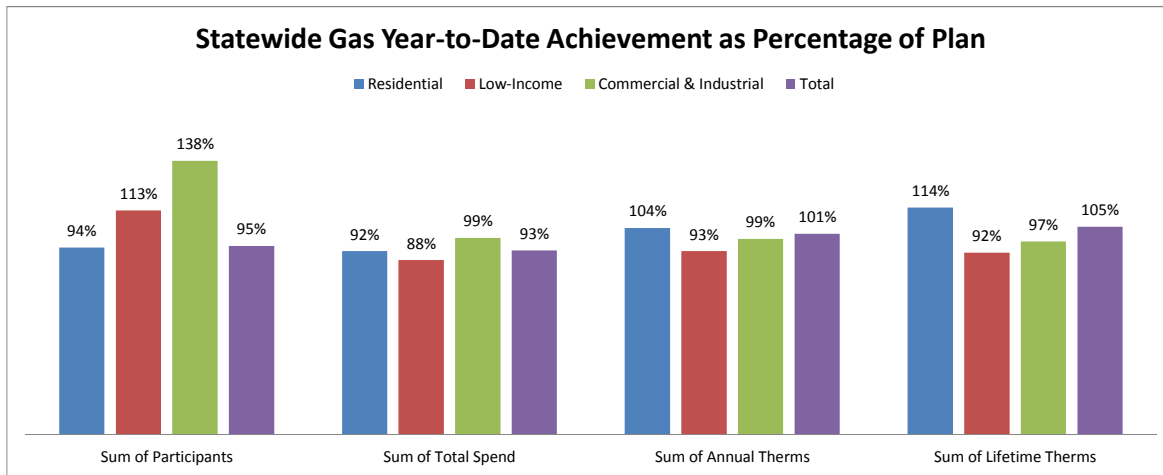
## CUMULATIVE STATEWIDE ELECTRIC DATA DASHBOARD - FROM JAN 1, 2016 THROUGH DEC 31, 2016 (12/36 MONTHS; 33% of term complete)

Row Labels	Values				
	Sum of Participants	Sum of Total Spend	Sum of Capacity (kW)	Sum of Energy (annual MWh)	Sum of Energy (Lifetime MWh)
<b>Electric</b>					
<b>Goal</b>	<b>10,905,877</b>	<b>\$ 1,834,538,576</b>	<b>577,296</b>	<b>4,122,145</b>	<b>40,483,538</b>
Residential	10,737,170	\$ 807,804,353	236,134	1,740,656	13,323,450
Low-Income	95,967	\$ 203,573,751	14,079	117,973	1,039,872
Commercial & Industrial	72,740	\$ 823,160,472	327,083	2,263,516	26,120,216
<b>Dec YTD</b>	<b>4,450,646</b>	<b>510,319,551</b>	<b>237,140</b>	<b>1,556,019</b>	<b>14,056,410</b>
Residential	4,375,349	197,011,636	99,534	662,469	3,861,352
Low-Income	33,513	50,718,644	5,662	46,209	396,234
Commercial & Industrial	41,784	262,589,271	131,943	847,341	9,798,824
<b>YTD as % of goal</b>	<b>41%</b>	<b>28%</b>	<b>41%</b>	<b>38%</b>	<b>35%</b>
Residential	41%	24%	42%	38%	29%
Low-Income	35%	25%	40%	39%	38%
Commercial & Industrial	57%	32%	40%	37%	38%



## FEBRUARY 2017 STATEWIDE GAS DATA DASHBOARD - FROM JAN 1, 2016 THROUGH DEC 31, 2016

Row Labels	Values			
	Sum of Participants	Sum of Total Spend	Sum of Annual Therms	Sum of Lifetime Therms
<b>Gas</b>				
<b>Goal</b>	<b>587,136</b>	<b>\$ 217,209,003</b>	<b>28,094,852</b>	<b>376,308,951</b>
Residential	570,157	\$ 128,442,097	15,104,655	179,262,960
Low-Income	10,696	\$ 44,617,918	2,054,910	40,776,120
Commercial & Industrial	6,283	\$ 44,148,988	10,935,287	156,269,871
<b>Dec YTD</b>	<b>558,350</b>	<b>201,826,008</b>	<b>28,424,005</b>	<b>394,523,246</b>
Residential	537,591	118,796,291	15,736,222	205,051,238
Low-Income	12,087	39,267,844	1,901,536	37,398,146
Commercial & Industrial	8,672	43,761,874	10,786,246	152,073,861
<b>YTD as % of goal</b>	<b>95%</b>	<b>93%</b>	<b>101%</b>	<b>105%</b>
Residential	94%	92%	104%	114%
Low-Income	113%	88%	93%	92%
Commercial & Industrial	138%	99%	99%	97%



## CUMULATIVE STATEWIDE GAS DATA DASHBOARD - FROM JAN 1, 2016 THROUGH DEC 31, 2016 (12/36 MONTHS; 33% of term complete)

Row Labels	Values			
	Sum of Participants	Sum of Total Spend	Sum of Annual Therms	Sum of Lifetime Therms
<b>Gas</b>				
<b>Goal</b>	<b>1,761,720</b>	<b>\$ 666,852,036</b>	<b>85,809,615</b>	<b>1,149,211,385</b>
Residential	1,709,969	\$ 395,557,580	45,811,091	549,588,367
Low-Income	32,276	\$ 135,400,869	6,192,804	122,879,252
Commercial & Industrial	19,475	\$ 135,893,587	33,805,720	476,743,766
Dec YTD	558,350	201,826,008	28,424,005	394,523,246
Residential	537,591	118,796,291	15,736,222	205,051,238
Low-Income	12,087	39,267,844	1,901,536	37,398,146
Commercial & Industrial	8,672	43,761,874	10,786,246	152,073,861
<b>YTD as % of goal</b>	<b>32%</b>	<b>30%</b>	<b>33%</b>	<b>34%</b>
Residential	31%	30%	34%	37%
Low-Income	37%	29%	31%	30%
Commercial & Industrial	45%	32%	32%	32%

