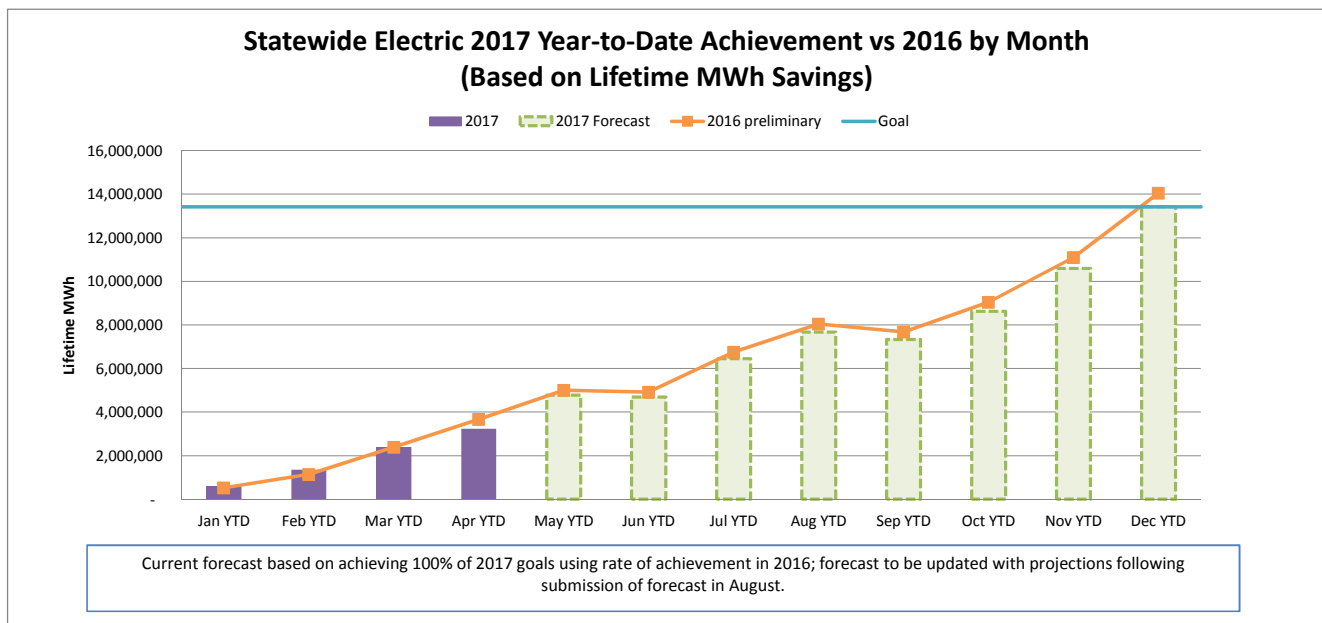
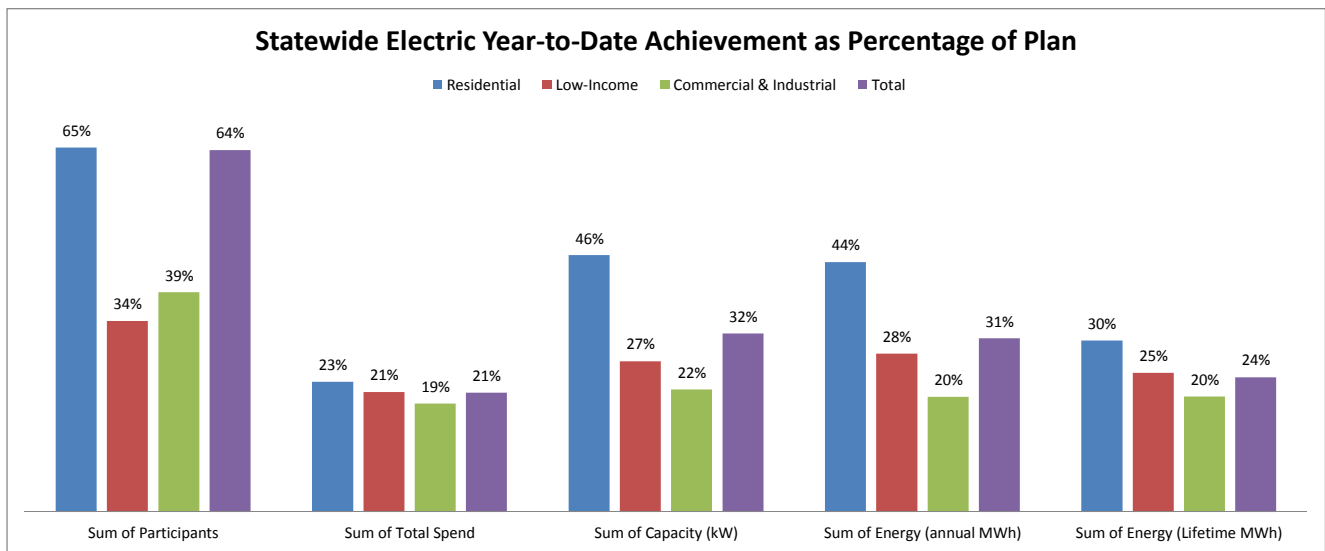


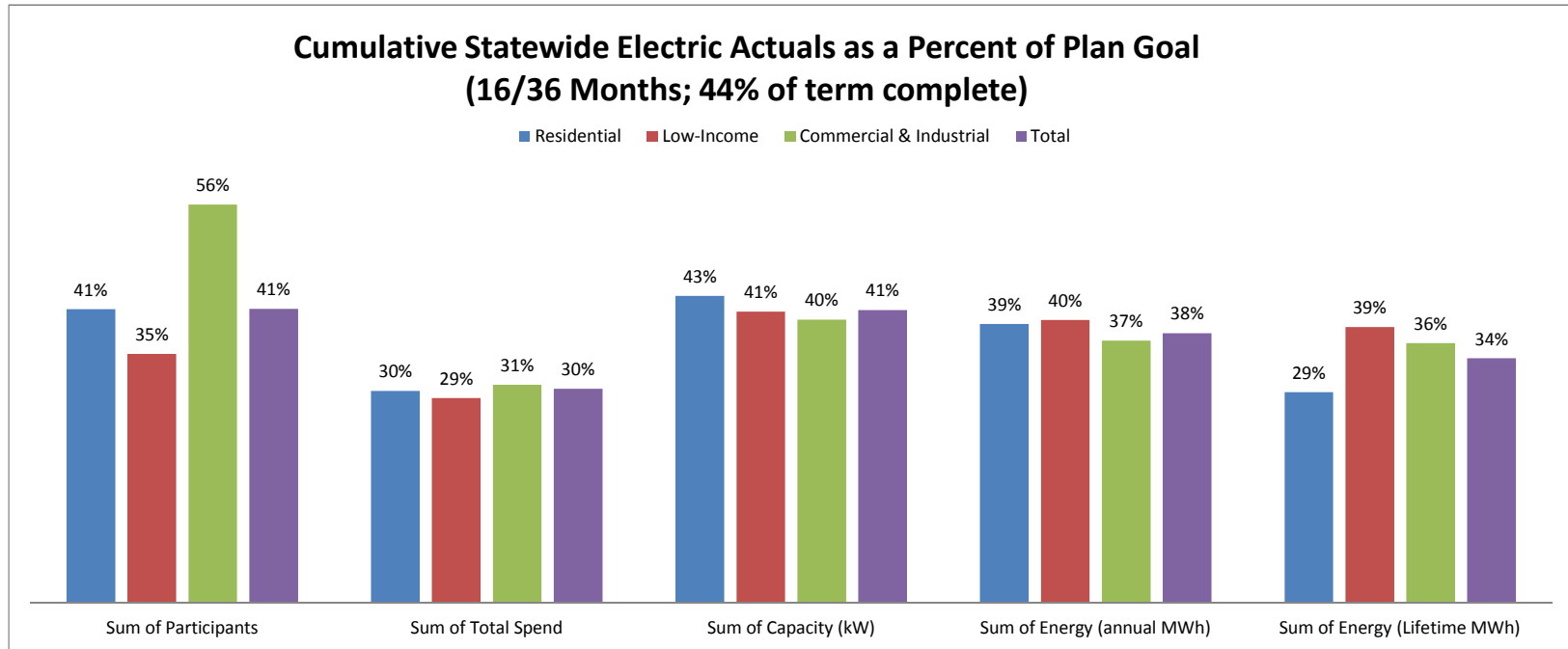
## JUNE 2017 STATEWIDE ELECTRIC DATA DASHBOARD - FROM JAN 1, 2017 THROUGH APR 30, 2017

Row Labels	Values				
	Sum of Participants	Sum of Total Spend	Sum of Capacity (kW)	Sum of Energy (annual MWh)	Sum of Energy (Lifetime MWh)
<b>Electric</b>					
<b>Goal</b>	<b>3,650,544</b>	<b>\$ 621,237,929</b>	<b>192,937</b>	<b>1,374,065</b>	<b>13,421,472</b>
Residential	3,593,671	270,393,188	79,313	584,087	4,475,067
Low-Income	31,989	68,098,932	4,658	39,211	340,877
Commercial & Industrial	24,884	282,745,809	108,966	750,767	8,605,528
<b>Apr YTD</b>	<b>2,347,209</b>	<b>\$ 131,629,140</b>	<b>61,171</b>	<b>423,692</b>	<b>3,211,663</b>
Residential	2,326,645	62,600,092	36,187	259,255	1,363,446
Low-Income	10,856	14,521,084	1,248	11,036	84,201
Commercial & Industrial	9,708	54,507,965	23,737	153,401	1,764,015
<b>YTD as % of goal</b>	<b>64%</b>	<b>21%</b>	<b>32%</b>	<b>31%</b>	<b>24%</b>
Residential	65%	23%	46%	44%	30%
Low-Income	34%	21%	27%	28%	25%
Commercial & Industrial	39%	19%	22%	20%	20%



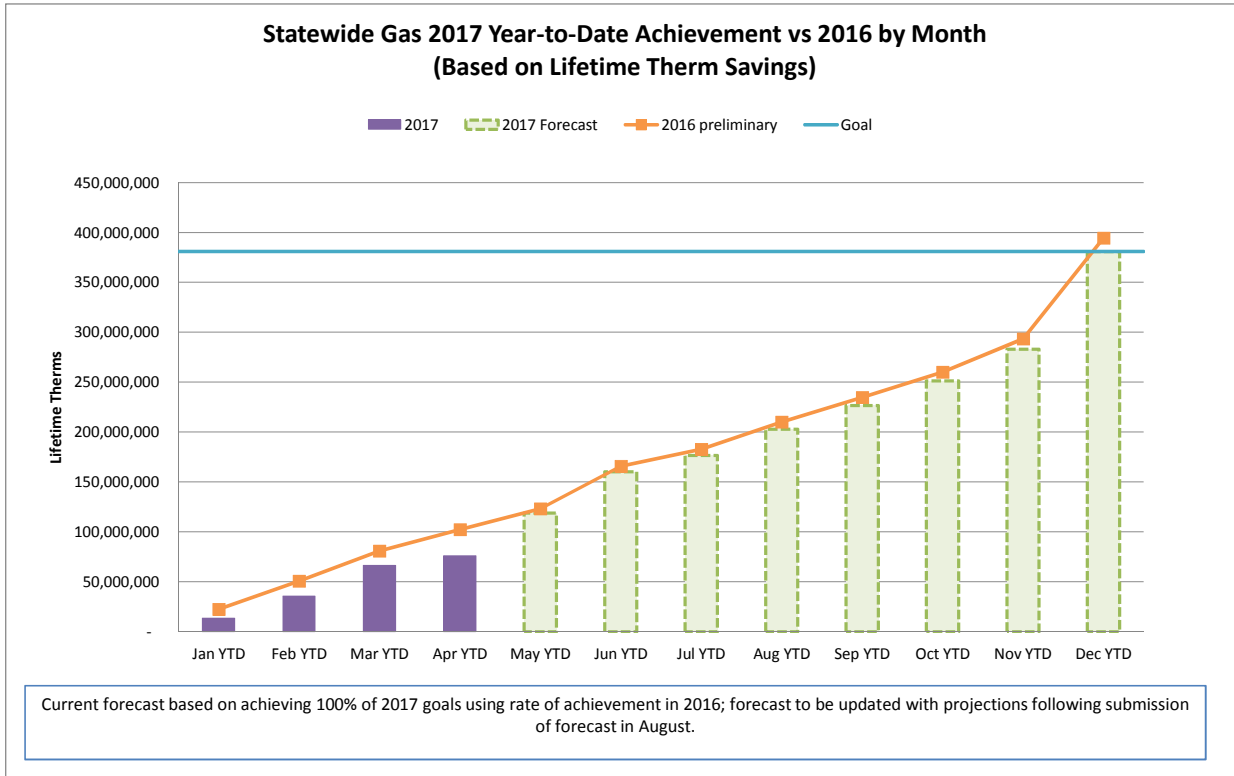
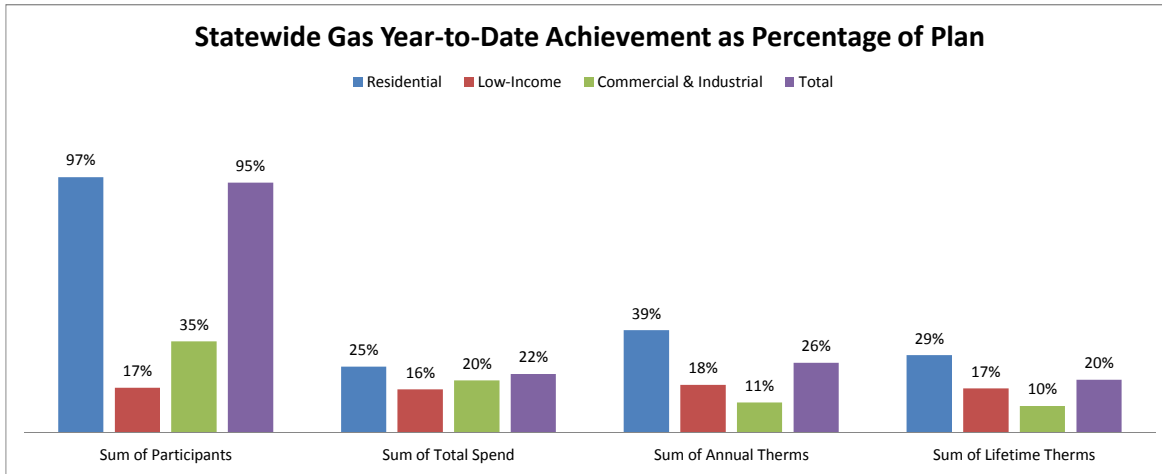
## CUMULATIVE STATEWIDE ELECTRIC DATA DASHBOARD - FROM JAN 1, 2016 THROUGH APR 30, 2017 (16/36 MONTHS; 44% of term complete)

Row Labels	Values				
	Sum of Participants	Sum of Total Spend	Sum of Capacity (kW)	Sum of Energy (annual MWh)	Sum of Energy (Lifetime MWh)
<b>Electric</b>					
<b>Goal</b>	<b>10,806,363</b>	<b>\$ 1,880,362,093</b>	<b>578,200</b>	<b>4,123,339</b>	<b>41,070,944</b>
Residential	10,635,366	\$ 816,165,146	231,583	1,697,233	13,102,747
Low-Income	96,127	\$ 204,036,648	13,890	116,624	1,026,558
Commercial & Industrial	74,870	\$ 860,160,299	332,727	2,309,482	26,941,639
<b>Apr YTD</b>	<b>4,450,646</b>	<b>562,978,876</b>	<b>237,140</b>	<b>1,556,019</b>	<b>14,056,410</b>
Residential	4,375,349	241,917,294	99,534	662,469	3,861,352
Low-Income	33,513	58,472,311	5,662	46,209	396,234
Commercial & Industrial	41,784	262,589,271	131,943	847,341	9,798,824
<b>YTD as % of goal</b>	<b>41%</b>	<b>30%</b>	<b>41%</b>	<b>38%</b>	<b>34%</b>
Residential	41%	30%	43%	39%	29%
Low-Income	35%	29%	41%	40%	39%
Commercial & Industrial	56%	31%	40%	37%	36%



## JUNE 2017 STATEWIDE GAS DATA DASHBOARD - FROM JAN 1, 2017 THROUGH APR 30, 2017

Row Labels	Values			
	Sum of Participants	Sum of Total Spend	Sum of Annual Therms	Sum of Lifetime Therms
<b>Gas</b>				
<b>Goal</b>	<b>586,896</b>	<b>\$ 221,747,647</b>	<b>28,504,378</b>	<b>380,806,813</b>
Residential	569,649	\$ 131,598,896	15,185,401	181,611,424
Low-Income	10,725	\$ 45,050,282	2,061,663	40,903,623
Commercial & Industrial	6,522	\$ 45,098,469	11,257,314	158,291,766
<b>Apr YTD</b>	<b>554,636</b>	<b>\$ 49,095,030</b>	<b>7,533,846</b>	<b>76,148,157</b>
Residential	550,554	\$ 32,835,079	5,880,022	53,252,140
Low-Income	1,827	\$ 7,360,864	372,341	6,849,696
Commercial & Industrial	2,255	\$ 8,899,087	1,281,483	16,046,322
<b>YTD as % of goal</b>	<b>95%</b>	<b>22%</b>	<b>26%</b>	<b>20%</b>
Residential	97%	25%	39%	29%
Low-Income	17%	16%	18%	17%
Commercial & Industrial	35%	20%	11%	10%



## CUMULATIVE STATEWIDE GAS DATA DASHBOARD - FROM JAN 1, 2016 THROUGH APR 30, 2017 (16/36 MONTHS; 44% of term complete)

Row Labels	Values			
	Sum of Participants	Sum of Total Spend	Sum of Annual Therms	Sum of Lifetime Therms
<b>Gas</b>				
<b>Goal</b>	<b>1,761,480</b>	<b>\$ 671,390,680</b>	<b>86,219,141</b>	<b>1,153,709,247</b>
Residential	1,709,461	\$ 398,714,379	45,891,837	551,936,831
Low-Income	32,305	\$ 135,833,233	6,199,557	123,006,755
Commercial & Industrial	19,714	\$ 136,843,068	34,127,747	478,765,661
Apr YTD	558,350	201,826,008	28,424,005	394,523,246
Residential	537,591	118,796,291	15,736,222	205,051,238
Low-Income	12,087	39,267,844	1,901,536	37,398,146
Commercial & Industrial	8,672	43,761,874	10,786,246	152,073,861
<b>YTD as % of goal</b>	<b>32%</b>	<b>30%</b>	<b>33%</b>	<b>34%</b>
Residential	31%	30%	34%	37%
Low-Income	37%	29%	31%	30%
Commercial & Industrial	44%	32%	32%	32%

