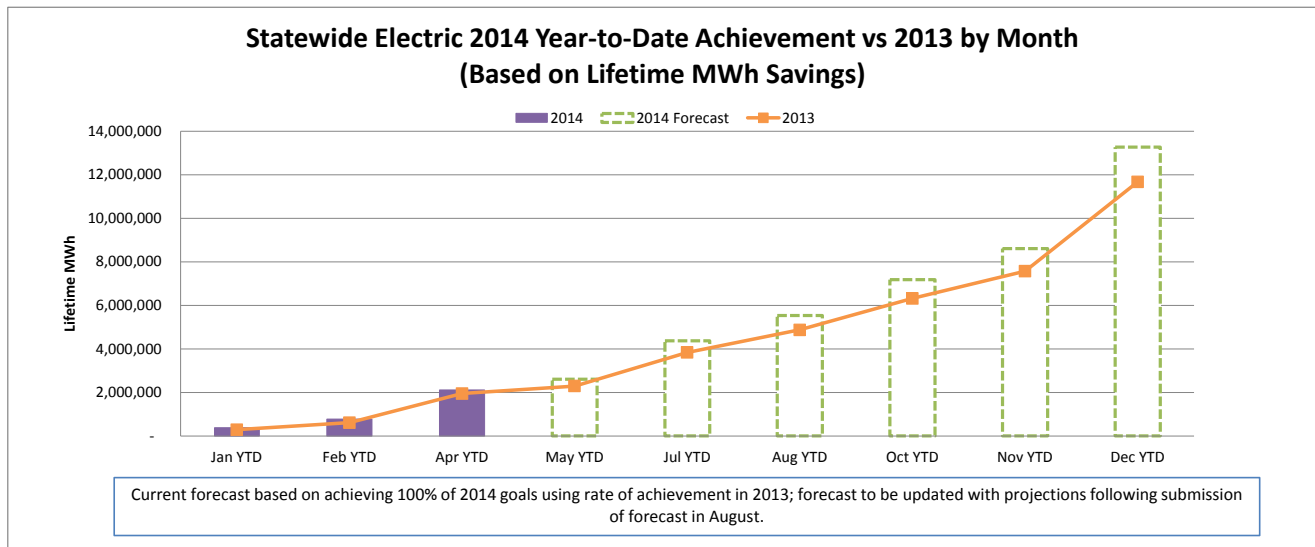
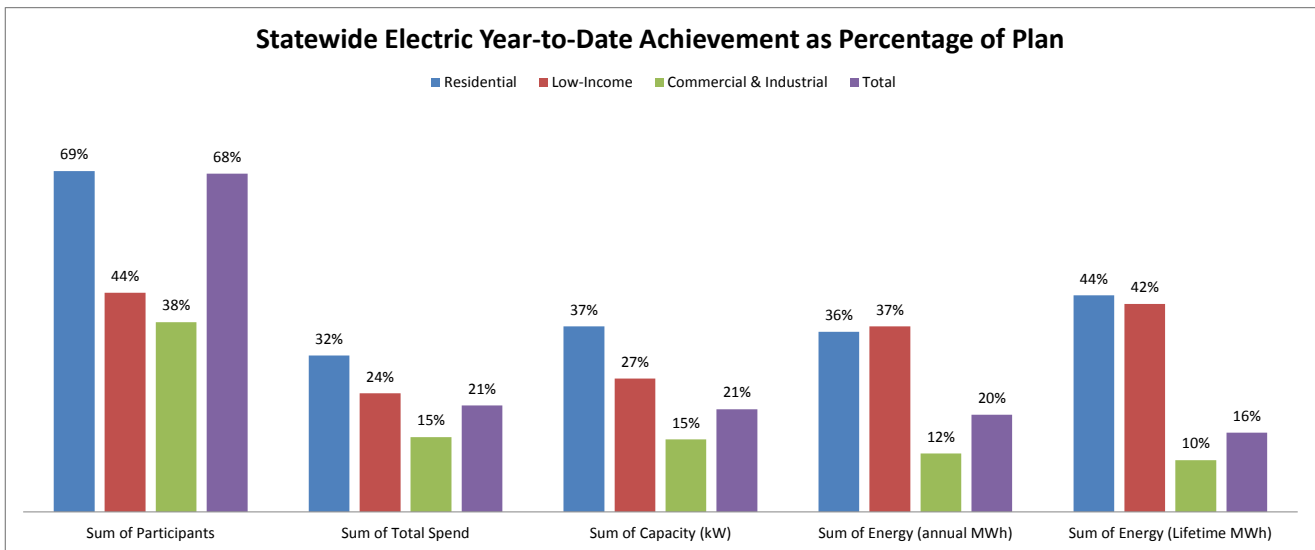


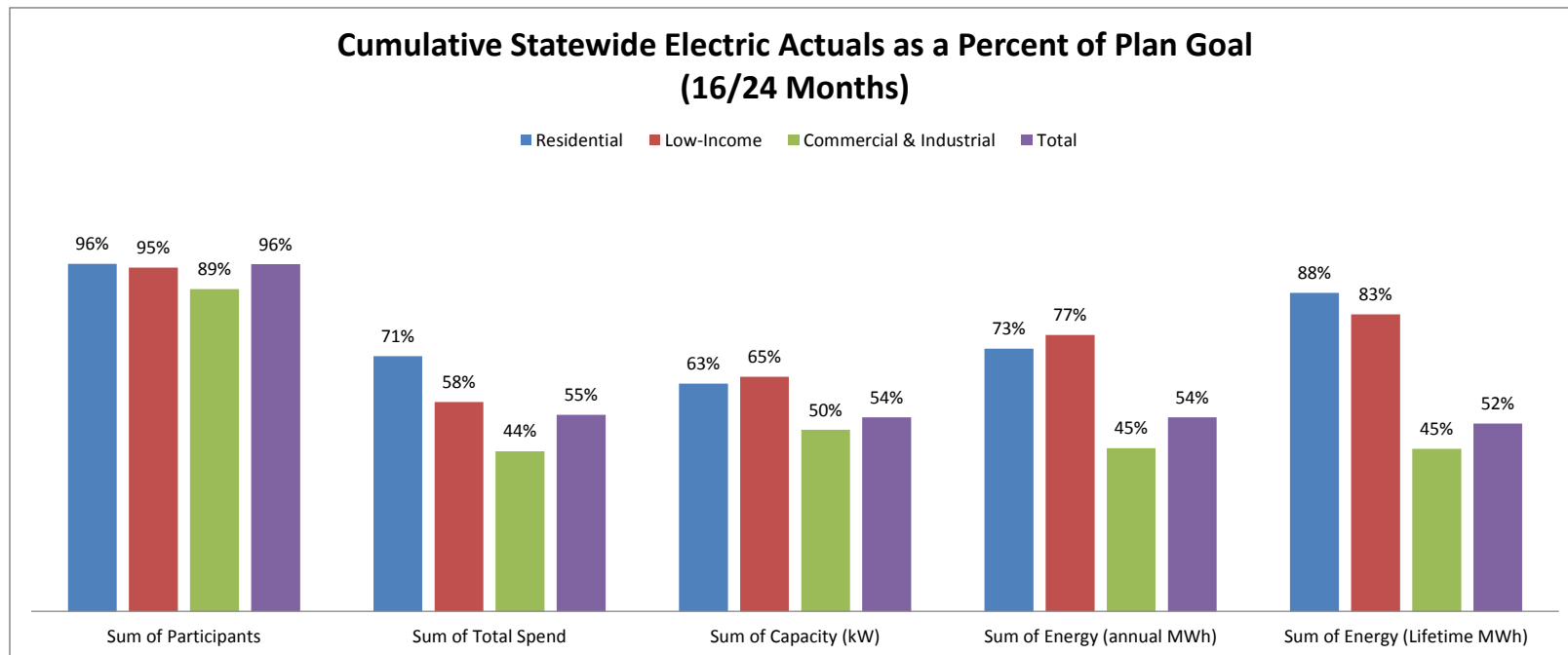
JUNE 2014 STATEWIDE ELECTRIC DATA DASHBOARD - FROM JAN 1, 2014 THROUGH APR 30, 2014

Row Labels	Values				
	Sum of Participants	Sum of Total Spend	Sum of Capacity (kW)	Sum of Energy (annual MWh)	Sum of Energy (Lifetime MWh)
Electric					
Goal	2,303,685	\$ 496,018,277	177,696	1,236,598	13,268,628
Residential	2,259,817	\$ 162,852,400	45,584	364,571	1,952,344
Low-Income	27,488	\$ 54,923,703	3,246	27,759	260,056
Commercial & Industrial	16,380	\$ 278,242,174	128,866	844,268	11,056,228
Apr YTD	1,571,397	\$ 106,460,400	36,760	242,039	2,115,667
Residential	1,552,992	\$ 51,361,805	17,053	132,486	852,569
Low-Income	12,141	\$ 13,118,528	873	10,384	109,028
Commercial & Industrial	6,264	\$ 41,980,067	18,834	99,170	1,154,070
YTD as % of goal	68%	21%	21%	20%	16%
Residential	69%	32%	37%	36%	44%
Low-Income	44%	24%	27%	37%	42%
Commercial & Industrial	38%	15%	15%	12%	10%



CUMULATIVE STATEWIDE ELECTRIC DATA DASHBOARD - FROM JAN 1, 2013 THROUGH APR 30, 2014 (16 / 24 MONTHS)

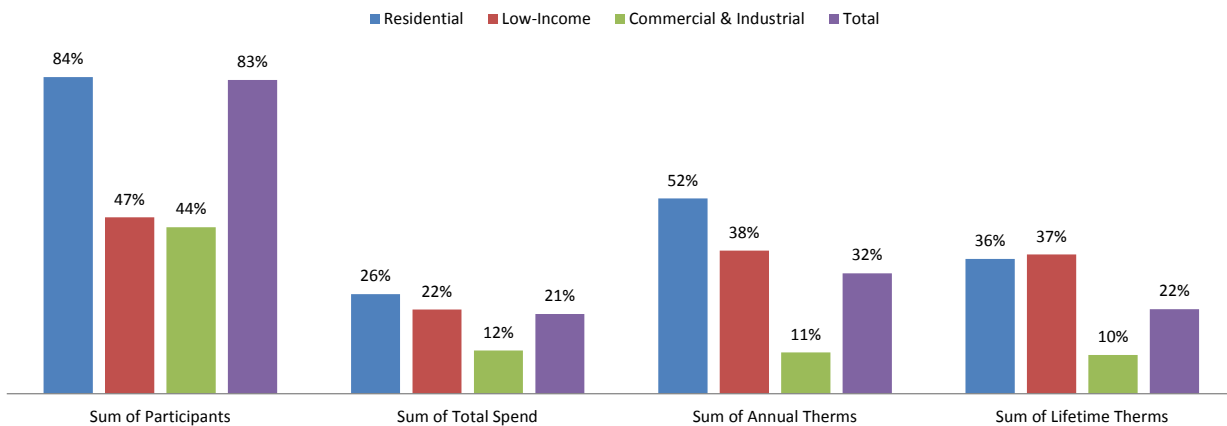
Row Labels	Values				
	Sum of Participants	Sum of Total Spend	Sum of Capacity (kW)	Sum of Energy (annual MWh)	Sum of Energy (Lifetime MWh)
Electric					
Goal	4,508,565	\$ 977,881,110	351,047	2,431,784	26,415,256
Residential	4,420,340	\$ 316,634,891	88,557	694,361	3,844,724
Low-Income	55,367	\$ 109,060,537	6,579	56,596	525,072
Commercial & Industrial	32,857	\$ 552,185,683	255,912	1,680,826	22,045,460
Apr YTD	4,347,669	533,565,181	189,333	1,311,011	13,788,730
Residential	4,265,399	224,469,953	56,047	506,372	3,400,552
Low-Income	52,865	63,452,392	4,288	43,459	433,243
Commercial & Industrial	29,405	245,642,835	128,998	761,180	9,954,934
YTD as % of goal	96%	55%	54%	54%	52%
Residential	96%	71%	63%	73%	88%
Low-Income	95%	58%	65%	77%	83%
Commercial & Industrial	89%	44%	50%	45%	45%



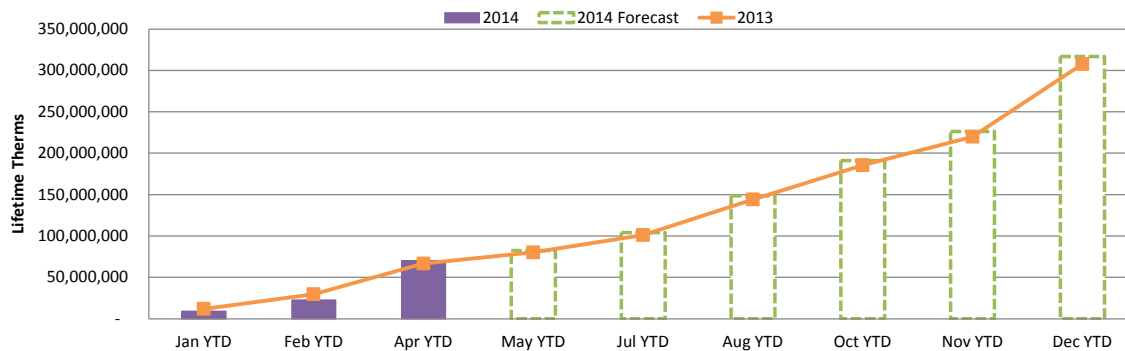
JUNE 2014 STATEWIDE GAS DATA DASHBOARD - FROM JAN 1, 2014 THROUGH APR 30, 2014

Row Labels	Values			
	Sum of Participants	Sum of Total Spend	Sum of Annual Therms	Sum of Lifetime Therms
Gas				
Goal	560,883	\$ 174,635,473	24,402,858	312,695,505
Residential	549,030	\$ 86,902,669	11,607,811	119,006,291
Low-Income	6,840	\$ 35,928,339	1,439,072	28,354,752
Commercial & Industrial	5,014	\$ 51,804,465	11,355,975	165,334,462
Apr YTD	467,468	\$ 36,993,805	7,820,749	70,210,339
Residential	462,041	\$ 22,977,474	6,028,114	42,692,111
Low-Income	3,206	\$ 8,038,287	547,767	10,496,258
Commercial & Industrial	2,221	\$ 5,978,043	1,244,868	17,021,970
YTD as % of goal	83%	21%	32%	22%
Residential	84%	26%	52%	36%
Low-Income	47%	22%	38%	37%
Commercial & Industrial	44%	12%	11%	10%

Statewide Gas Year-to-Date Achievement as Percentage of Plan



Statewide Gas 2014 Year-to-Date Achievement vs 2013 by Month (Based on Lifetime Therm Savings)



Current forecast based on achieving 100% of 2014 goals using rate of achievement in 2013; forecast to be updated with projections following submission of forecast in August.

CUMULATIVE STATEWIDE GAS DATA DASHBOARD - FROM JAN 1, 2013 THROUGH APR 30, 2014 (16 / 24 MONTHS)

Row Labels	Values			
	Sum of Participants	Sum of Total Spend	Sum of Annual Therms	Sum of Lifetime Therms
Gas				
Goal	1,110,071	\$ 343,115,888	47,065,357	616,220,468
Residential	1,086,719	\$ 171,688,550	21,898,593	235,619,595
Low-Income	13,484	\$ 70,337,314	2,836,815	55,869,681
Commercial & Industrial	9,868	\$ 101,090,025	22,329,948	324,731,192
Apr YTD	1,040,420	188,799,158	31,744,822	377,846,660
Residential	1,014,823	110,366,113	19,201,176	188,598,530
Low-Income	13,199	42,621,856	2,833,315	54,630,095
Commercial & Industrial	12,398	35,811,189	9,710,331	134,618,035
YTD as % of goal	94%	55%	67%	61%
Residential	93%	64%	88%	80%
Low-Income	98%	61%	100%	98%
Commercial & Industrial	126%	35%	43%	41%

