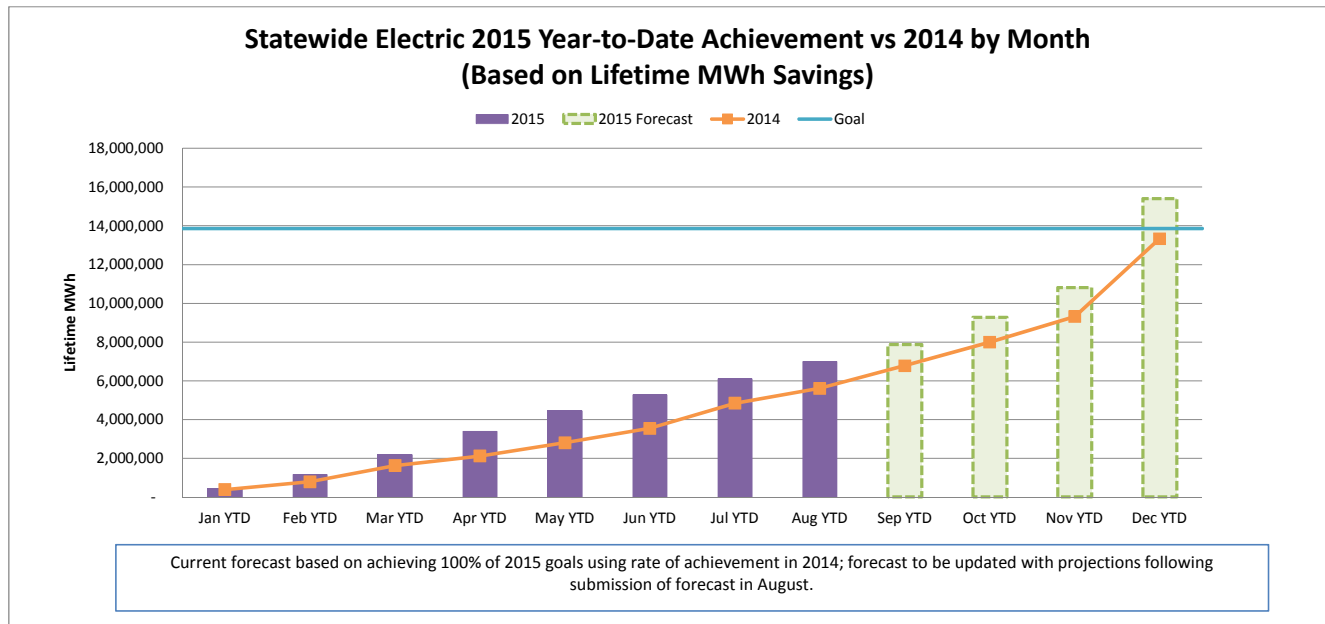
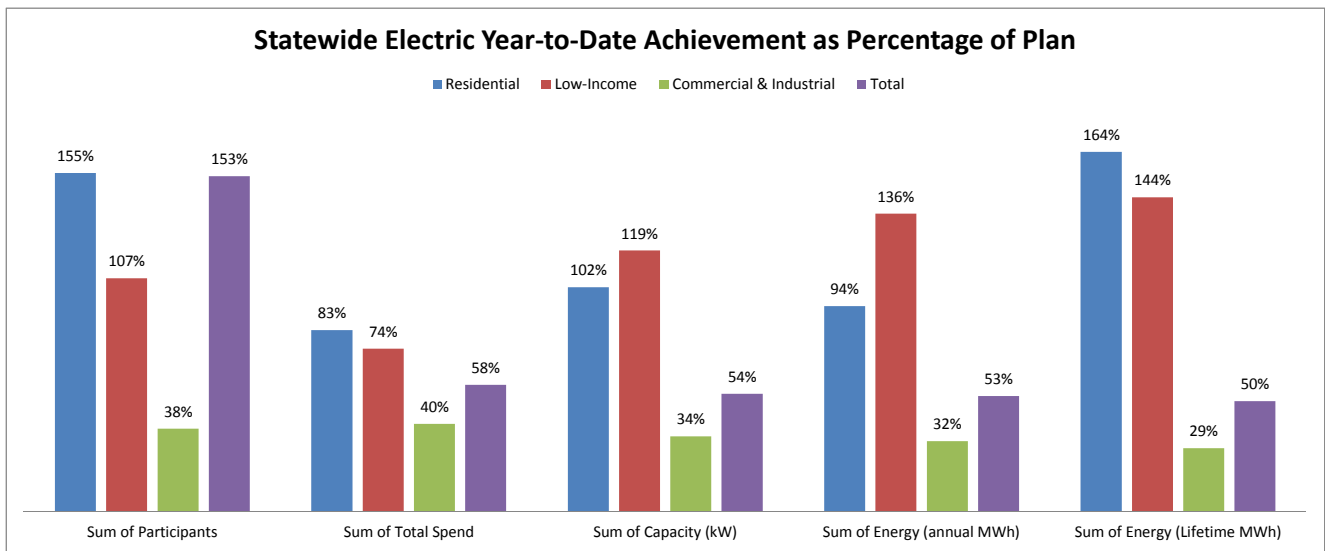


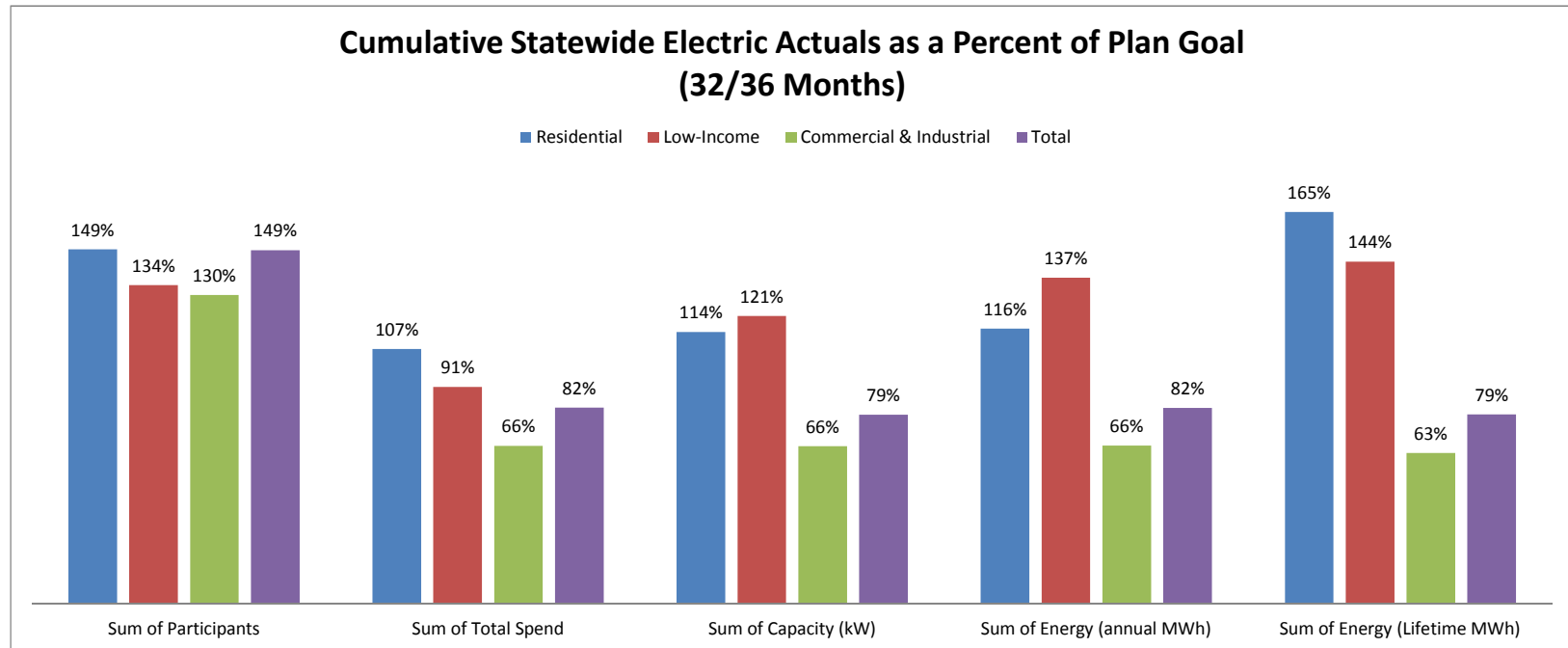
OCTOBER 2015 STATEWIDE ELECTRIC DATA DASHBOARD - FROM JAN 1, 2015 THROUGH AUG 31, 2015

Row Labels	Values				
	Sum of Participants	Sum of Total Spend	Sum of Capacity (kW)	Sum of Energy (annual MWh)	Sum of Energy (Lifetime MWh)
Electric					
Goal	2,350,053	\$ 519,094,445	179,573	1,274,646	13,863,794
Residential	2,306,350	171,322,993	47,313	380,446	1,985,572
Low-Income	27,106	56,913,127	3,245	26,794	254,311
Commercial & Industrial	16,597	290,858,324	129,015	867,407	11,623,911
Aug YTD	3,599,745	300,637,337	96,629	672,432	6,989,627
Residential	3,564,591	142,043,172	48,444	357,048	3,260,137
Low-Income	28,880	42,338,431	3,868	36,450	365,020
Commercial & Industrial	6,274	116,255,733	44,317	278,934	3,364,470
YTD as % of goal	153%	58%	54%	53%	50%
Residential	155%	83%	102%	94%	164%
Low-Income	107%	74%	119%	136%	144%
Commercial & Industrial	38%	40%	34%	32%	29%



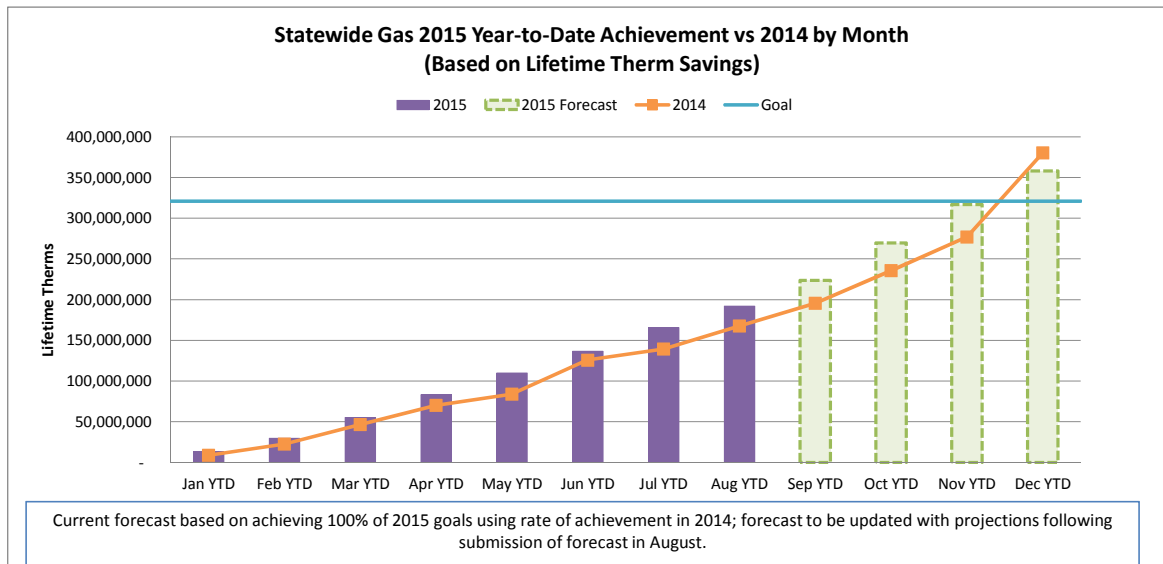
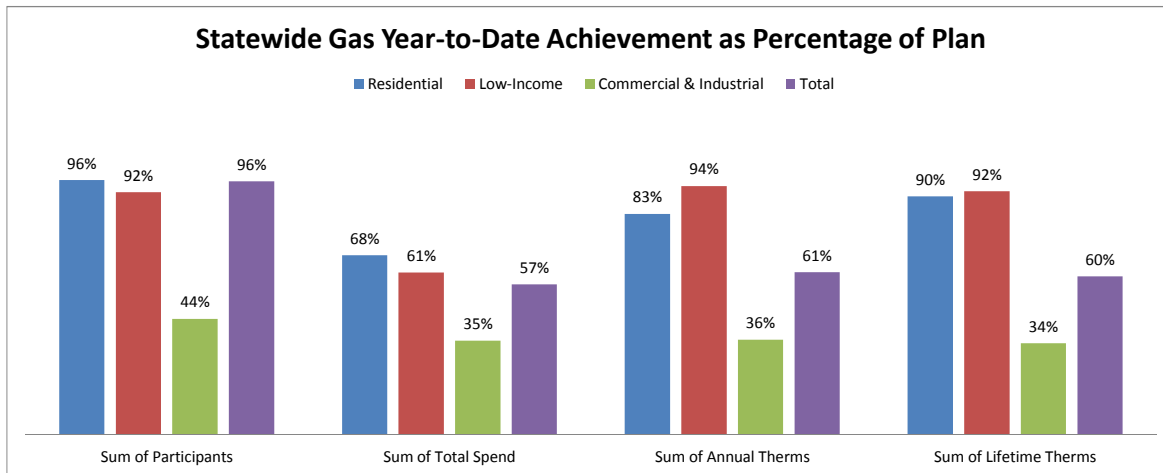
CUMULATIVE STATEWIDE ELECTRIC DATA DASHBOARD - FROM JAN 1, 2013 THROUGH AUG 31, 2015 (32/36 MONTHS)

Row Labels	Values				
	Sum of Participants	Sum of Total Spend	Sum of Capacity (kW)	Sum of Energy (annual MWh)	Sum of Energy (Lifetime MWh)
Electric					
Goal	6,858,617	\$ 1,496,975,555	530,620	3,706,430	40,279,050
Residential	6,726,690	\$ 487,957,884	135,870	1,074,808	5,830,296
Low-Income	82,473	\$ 165,973,664	9,824	83,390	779,383
Commercial & Industrial	49,454	\$ 843,044,007	384,927	2,548,233	33,669,371
Aug YTD	10,192,439	1,231,496,013	421,181	3,048,210	32,002,394
Residential	10,017,876	521,902,646	155,121	1,242,310	9,604,965
Low-Income	110,415	151,030,711	11,879	114,212	1,120,417
Commercial & Industrial	64,148	558,562,656	254,181	1,691,688	21,277,012
YTD as % of goal	149%	82%	79%	82%	79%
Residential	149%	107%	114%	116%	165%
Low-Income	134%	91%	121%	137%	144%
Commercial & Industrial	130%	66%	66%	66%	63%



OCTOBER 2015 STATEWIDE GAS DATA DASHBOARD - FROM JAN 1, 2015 THROUGH AUG 31, 2015

Row Labels	Values			
	Sum of Participants	Sum of Total Spend	Sum of Annual Therms	Sum of Lifetime Therms
Gas				
Goal	572,755	\$ 180,154,149	24,951,086	320,982,390
Residential	560,561	\$ 88,771,674	11,605,486	115,703,917
Low-Income	7,009	\$ 37,843,984	1,486,113	29,327,842
Commercial & Industrial	5,185	\$ 53,538,491	11,859,487	175,950,631
Aug YTD	548,374	102,406,429	15,320,887	191,841,900
Residential	539,685	60,217,545	9,675,865	104,175,782
Low-Income	6,423	23,190,096	1,396,782	26,993,893
Commercial & Industrial	2,266	18,998,788	4,248,240	60,672,225
YTD as % of goal	96%	57%	61%	60%
Residential	96%	68%	83%	90%
Low-Income	92%	61%	94%	92%
Commercial & Industrial	44%	35%	36%	34%



CUMULATIVE STATEWIDE GAS DATA DASHBOARD - FROM JAN 1, 2013 THROUGH AUG 31, 2015 (32/36 MONTHS)

Row Labels	Values			
	Sum of Participants	Sum of Total Spend	Sum of Annual Therms	Sum of Lifetime Therms
Gas				
Goal	1,682,827	\$ 523,270,037	72,016,443	937,202,858
Residential	1,647,280	\$ 260,460,223	33,504,079	351,323,512
Low-Income	20,494	\$ 108,181,298	4,322,929	85,197,523
Commercial & Industrial	15,053	\$ 154,628,516	34,189,435	500,681,823
Aug YTD	1,665,820	420,108,282	67,491,623	879,748,408
Residential	1,627,501	240,977,165	37,981,728	424,686,570
Low-Income	27,149	96,071,559	6,313,778	122,217,429
Commercial & Industrial	11,170	83,059,559	23,196,117	332,844,409
YTD as % of goal	99%	80%	94%	94%
Residential	99%	93%	113%	121%
Low-Income	132%	89%	146%	143%
Commercial & Industrial	74%	54%	68%	66%

