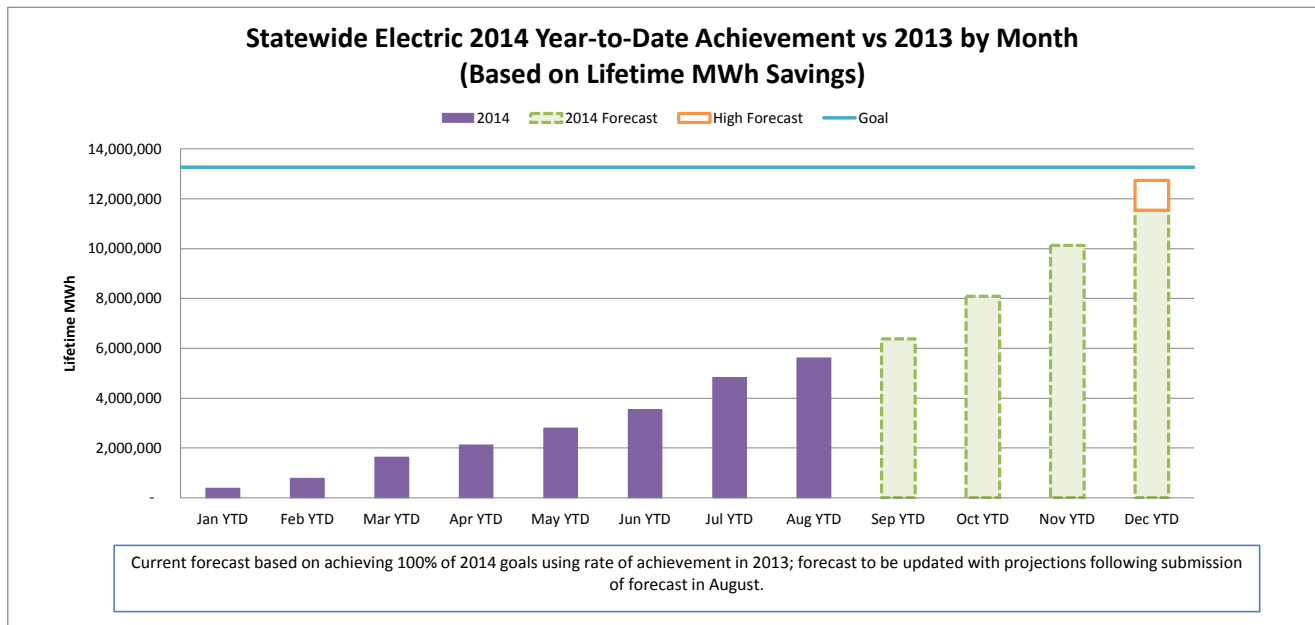
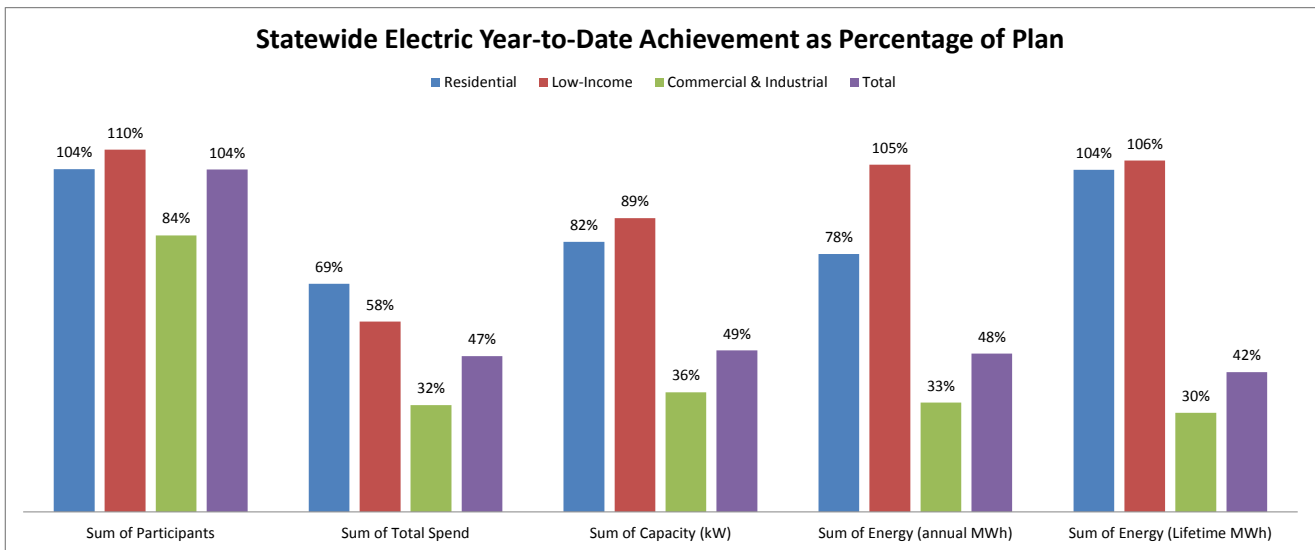


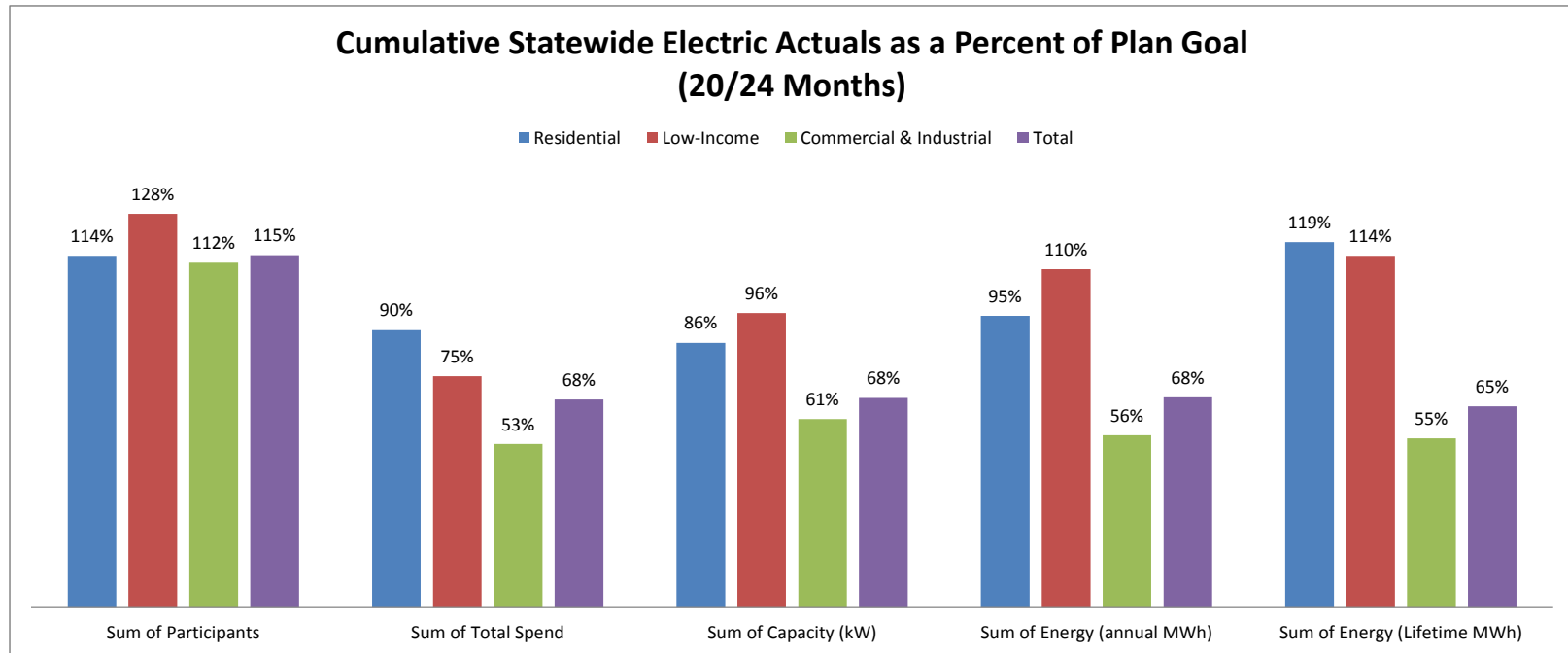
## OCTOBER 2014 STATEWIDE ELECTRIC DATA DASHBOARD - FROM JAN 1, 2014 THROUGH AUG 31, 2014

Row Labels	Values				
	Sum of Participants	Sum of Total Spend	Sum of Capacity (kW)	Sum of Energy (annual MWh)	Sum of Energy (Lifetime MWh)
<b>Electric</b>					
<b>Goal</b>	<b>2,303,685</b>	<b>\$ 496,018,277</b>	<b>177,696</b>	<b>1,236,598</b>	<b>13,268,628</b>
Residential	2,259,817	\$ 162,852,400	45,584	364,571	1,952,344
Low-Income	27,488	\$ 54,923,703	3,246	27,759	260,056
Commercial & Industrial	16,380	\$ 278,242,174	128,866	844,268	11,056,228
<b>Aug YTD</b>	<b>2,386,424</b>	<b>233,858,054</b>	<b>86,742</b>	<b>592,450</b>	<b>5,608,245</b>
Residential	2,342,604	112,420,889	37,215	284,402	2,020,737
Low-Income	30,117	31,640,099	2,885	29,161	276,306
Commercial & Industrial	13,703	89,797,067	46,641	278,887	3,311,202
<b>YTD as % of goal</b>	<b>104%</b>	<b>47%</b>	<b>49%</b>	<b>48%</b>	<b>42%</b>
Residential	104%	69%	82%	78%	104%
Low-Income	110%	58%	89%	105%	106%
Commercial & Industrial	84%	32%	36%	33%	30%



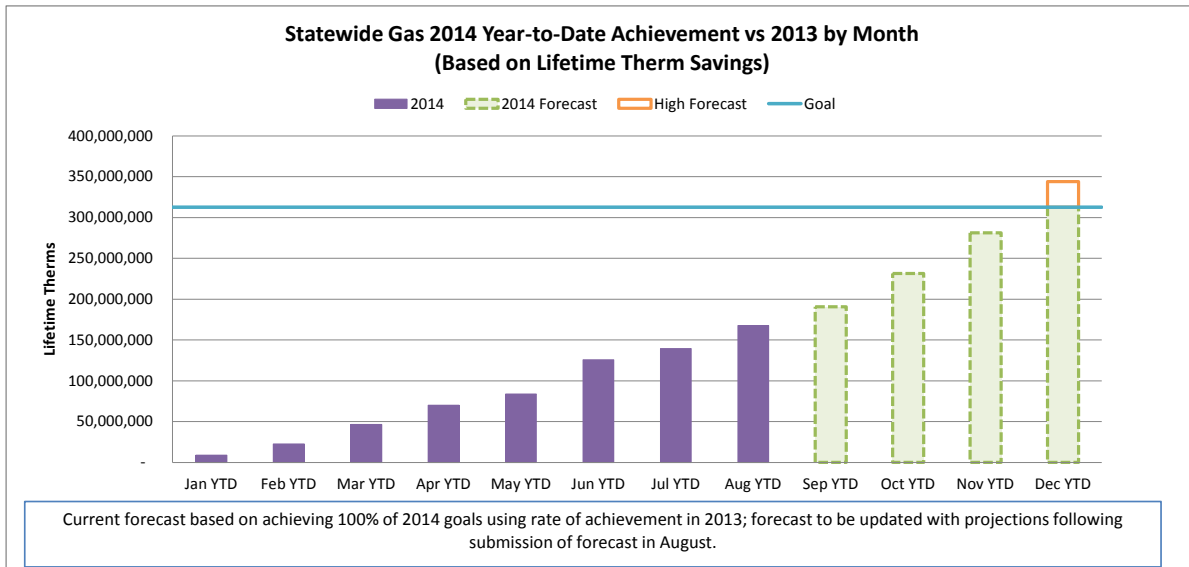
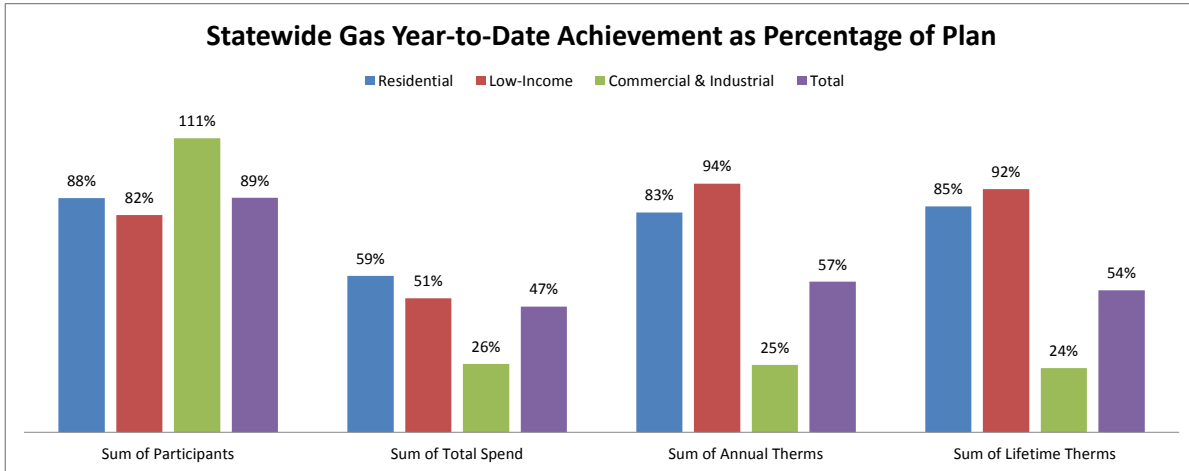
## CUMULATIVE STATEWIDE ELECTRIC DATA DASHBOARD - FROM JAN 1, 2013 THROUGH AUG 31, 2014 (20/24 MONTHS)

Row Labels	Values				
	Sum of Participants	Sum of Total Spend	Sum of Capacity (kW)	Sum of Energy (annual MWh)	Sum of Energy (Lifetime MWh)
<b>Electric</b>					
<b>Goal</b>	<b>4,508,565</b>	<b>\$ 977,881,110</b>	<b>351,047</b>	<b>2,431,784</b>	<b>26,415,256</b>
Residential	4,420,340	\$ 316,634,891	88,557	694,361	3,844,724
Low-Income	55,367	\$ 109,060,537	6,579	56,596	525,072
Commercial & Industrial	32,857	\$ 552,185,683	255,912	1,680,826	22,045,460
<b>Aug YTD</b>	<b>5,162,696</b>	<b>660,962,835</b>	<b>239,315</b>	<b>1,661,421</b>	<b>17,281,308</b>
Residential	5,055,011	285,529,037	76,209	658,289	4,568,720
Low-Income	70,841	81,973,963	6,301	62,235	600,522
Commercial & Industrial	36,844	293,459,835	156,806	940,897	12,112,066
<b>YTD as % of goal</b>	<b>115%</b>	<b>68%</b>	<b>68%</b>	<b>68%</b>	<b>65%</b>
Residential	114%	90%	86%	95%	119%
Low-Income	128%	75%	96%	110%	114%
Commercial & Industrial	112%	53%	61%	56%	55%



# OCTOBER 2014 STATEWIDE GAS DATA DASHBOARD - FROM JAN 1, 2014 THROUGH AUG 31, 2014

Row Labels	Values			
	Sum of Participants	Sum of Total Spend	Sum of Annual Therms	Sum of Lifetime Therms
<b>Gas</b>				
<b>Goal</b>	<b>560,883</b>	<b>\$ 174,635,473</b>	<b>24,402,858</b>	<b>312,695,505</b>
Residential	549,030	\$ 86,902,669	11,607,811	119,006,291
Low-Income	6,840	\$ 35,928,339	1,439,072	28,354,752
Commercial & Industrial	5,014	\$ 51,804,465	11,355,975	165,334,462
Aug YTD	496,901	82,942,968	13,873,862	167,598,287
Residential	485,717	51,365,152	9,639,580	101,510,432
Low-Income	5,615	18,188,716	1,352,097	26,050,387
Commercial & Industrial	5,569	13,389,100	2,882,185	40,037,467
<b>YTD as % of goal</b>	<b>89%</b>	<b>47%</b>	<b>57%</b>	<b>54%</b>
Residential	88%	59%	83%	85%
Low-Income	82%	51%	94%	92%
Commercial & Industrial	111%	26%	25%	24%



## CUMULATIVE STATEWIDE GAS DATA DASHBOARD - FROM JAN 1, 2013 THROUGH AUG 31, 2014 (20/24 MONTHS )

Row Labels	Values			
	Sum of Participants	Sum of Total Spend	Sum of Annual Therms	Sum of Lifetime Therms
<b>Gas</b>				
<b>Goal</b>	<b>1,110,071</b>	<b>\$ 343,115,888</b>	<b>47,065,357</b>	<b>616,220,468</b>
Residential	1,086,719	\$ 171,688,550	21,898,593	235,619,595
Low-Income	13,484	\$ 70,337,314	2,836,815	55,869,681
Commercial & Industrial	9,868	\$ 101,090,025	22,329,948	324,731,192
Aug YTD	1,064,932	234,748,321	37,797,935	475,234,608
Residential	1,038,499	138,753,792	22,812,641	247,416,851
Low-Income	15,608	52,772,284	3,637,645	70,184,225
Commercial & Industrial	10,825	43,222,245	11,347,648	157,633,532
<b>YTD as % of goal</b>	<b>96%</b>	<b>68%</b>	<b>80%</b>	<b>77%</b>
Residential	96%	81%	104%	105%
Low-Income	116%	75%	128%	126%
Commercial & Industrial	110%	43%	51%	49%

