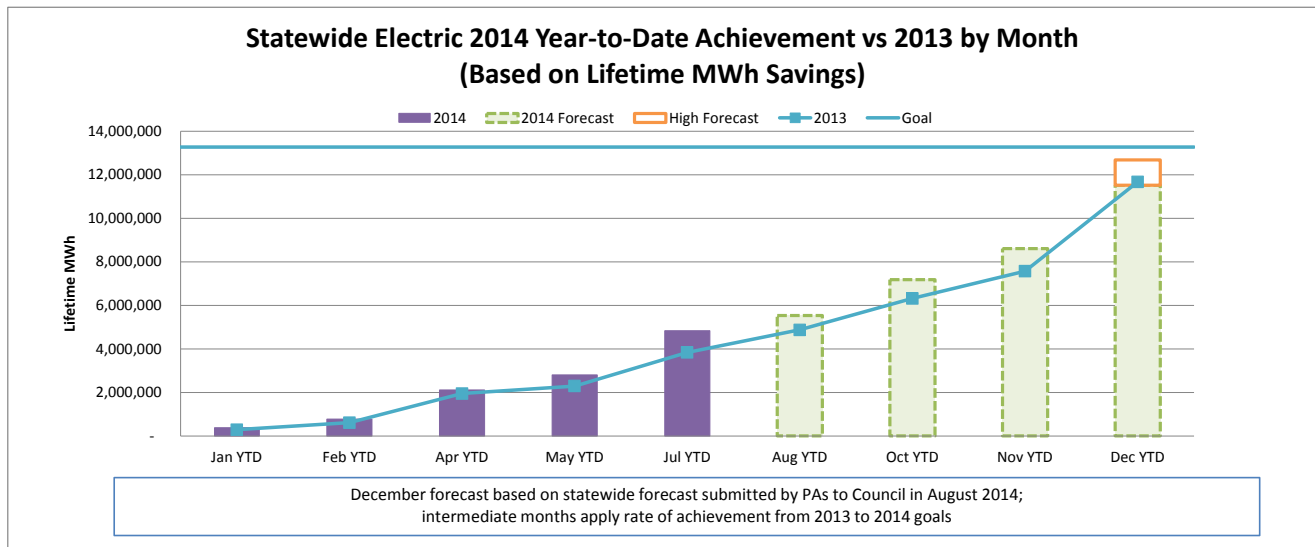
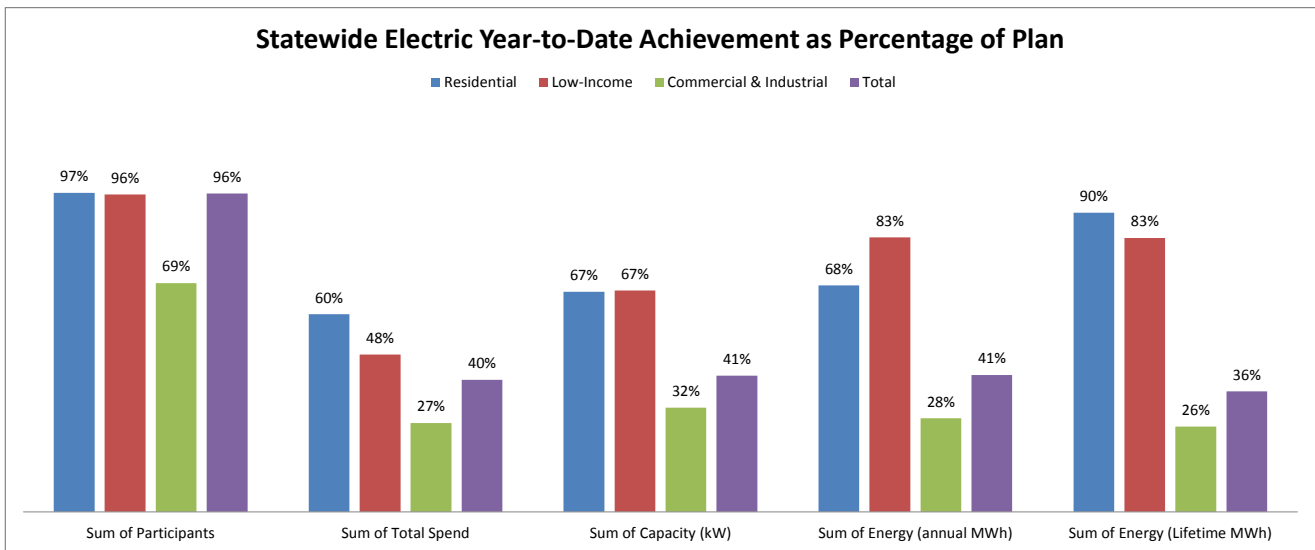


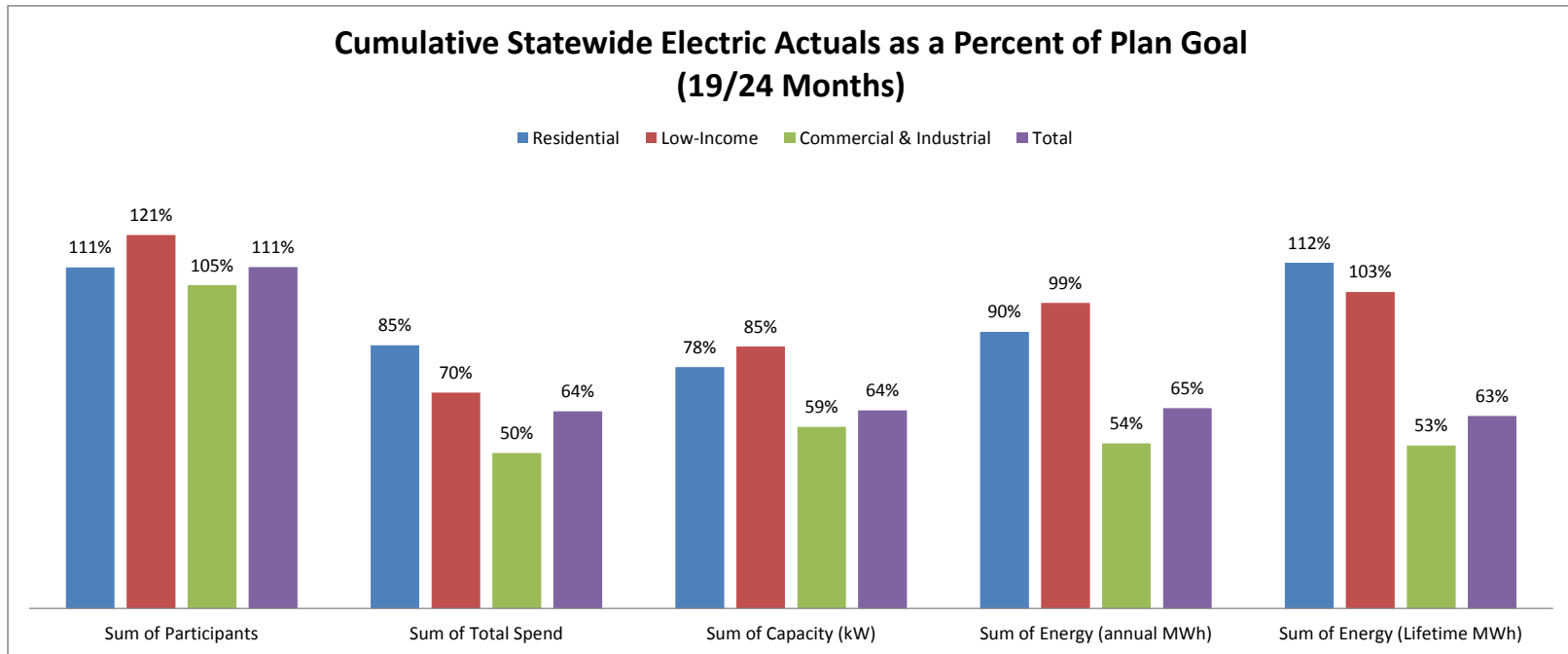
SEPTEMBER 2014 STATEWIDE ELECTRIC DATA DASHBOARD - FROM JAN 1, 2014 THROUGH JUL 31, 2014

Row Labels	Values				
	Sum of Participants	Sum of Total Spend	Sum of Capacity (kW)	Sum of Energy (annual MWh)	Sum of Energy (Lifetime MWh)
Electric					
Goal	2,303,685	\$ 496,018,277	177,696	1,236,598	13,268,628
Residential	2,259,817	\$ 162,852,400	45,584	364,571	1,952,344
Low-Income	27,488	\$ 54,923,703	3,246	27,759	260,056
Commercial & Industrial	16,380	\$ 278,242,174	128,866	844,268	11,056,228
Jul YTD	2,219,206	198,195,405	73,147	511,461	4,836,969
Residential	2,181,491	97,305,903	30,365	249,631	1,765,720
Low-Income	26,386	26,123,473	2,175	23,053	215,297
Commercial & Industrial	11,329	74,766,028	40,607	238,777	2,855,952
YTD as % of goal	96%	40%	41%	41%	36%
Residential	97%	60%	67%	68%	90%
Low-Income	96%	48%	67%	83%	83%
Commercial & Industrial	69%	27%	32%	28%	26%



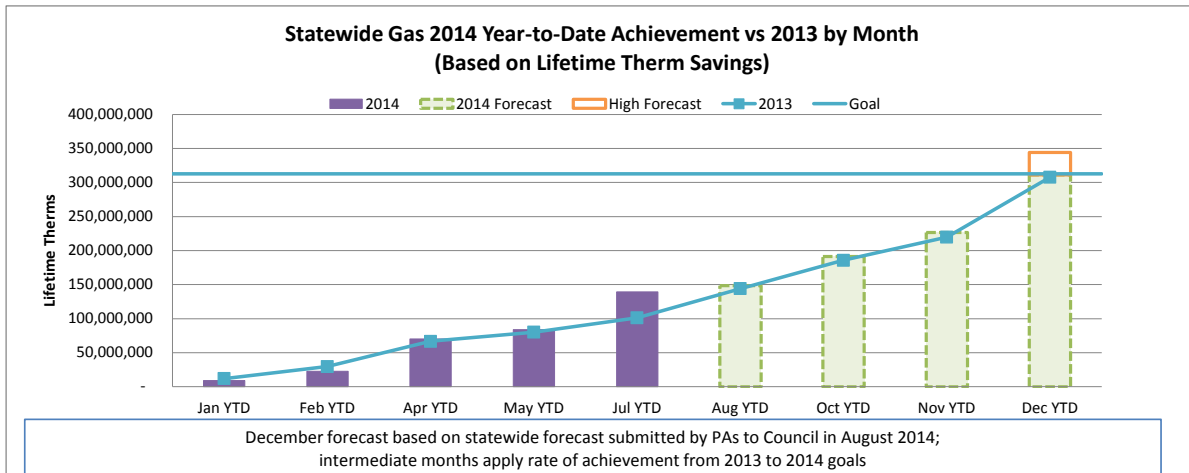
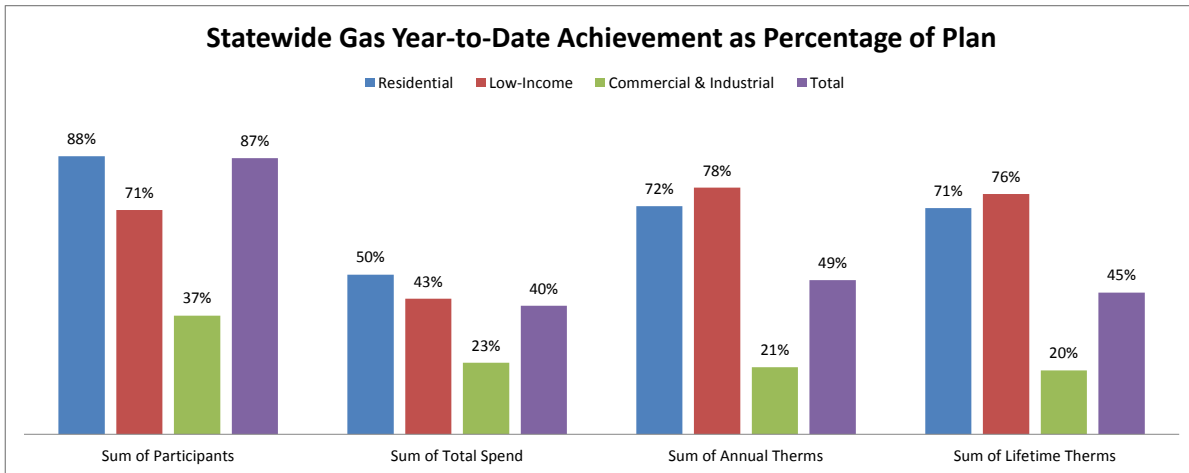
CUMULATIVE STATEWIDE ELECTRIC DATA DASHBOARD - FROM JAN 1, 2013 THROUGH JUL 31, 2014 (19/24 MONTHS)

Row Labels	Values				
	Sum of Participants	Sum of Total Spend	Sum of Capacity (kW)	Sum of Energy (annual MWh)	Sum of Energy (Lifetime MWh)
Electric					
Goal	4,508,565	\$ 977,881,110	351,047	2,431,784	26,415,256
Residential	4,420,340	\$ 316,634,891	88,557	694,361	3,844,724
Low-Income	55,367	\$ 109,060,537	6,579	56,596	525,072
Commercial & Industrial	32,857	\$ 552,185,683	255,912	1,680,826	22,045,460
Jul YTD	4,995,478	625,300,185	225,720	1,580,432	16,510,032
Residential	4,893,898	270,414,051	69,359	623,518	4,313,703
Low-Income	67,110	76,457,337	5,590	56,127	539,512
Commercial & Industrial	34,470	278,428,797	150,771	900,787	11,656,817
YTD as % of goal	111%	64%	64%	65%	63%
Residential	111%	85%	78%	90%	112%
Low-Income	121%	70%	85%	99%	103%
Commercial & Industrial	105%	50%	59%	54%	53%



SEPTEMBER 2014 STATEWIDE GAS DATA DASHBOARD - FROM JAN 1, 2014 THROUGH JUL 31, 2014

Row Labels	Values			
	Sum of Participants	Sum of Total Spend	Sum of Annual Therms	Sum of Lifetime Therms
Gas				
Goal	560,883	\$ 174,635,473	24,402,858	312,695,505
Residential	549,030	\$ 86,902,669	11,607,811	119,006,291
Low-Income	6,840	\$ 35,928,339	1,439,072	28,354,752
Commercial & Industrial	5,014	\$ 51,804,465	11,355,975	165,334,462
Jul YTD	487,260	70,685,867	11,845,067	139,466,210
Residential	480,559	43,690,482	8,333,024	84,767,941
Low-Income	4,827	15,316,841	1,116,903	21,445,380
Commercial & Industrial	1,874	11,678,545	2,395,140	33,252,890
YTD as % of goal	87%	40%	49%	45%
Residential	88%	50%	72%	71%
Low-Income	71%	43%	78%	76%
Commercial & Industrial	37%	23%	21%	20%



CUMULATIVE STATEWIDE GAS DATA DASHBOARD - FROM JAN 1, 2013 THROUGH JUL 31, 2014 (19/24 MONTHS)

Row Labels	Values			
	Sum of Participants	Sum of Total Spend	Sum of Annual Therms	Sum of Lifetime Therms
Gas				
Goal	1,110,071	\$ 343,115,888	47,065,357	616,220,468
Residential	1,086,719	\$ 171,688,550	21,898,593	235,619,595
Low-Income	13,484	\$ 70,337,314	2,836,815	55,869,681
Commercial & Industrial	9,868	\$ 101,090,025	22,329,948	324,731,192
Jul YTD	1,055,291	222,491,220	35,769,140	447,102,532
Residential	1,033,341	131,079,121	21,506,085	230,674,360
Low-Income	14,820	49,900,409	3,402,452	65,579,217
Commercial & Industrial	7,130	41,511,690	10,860,603	150,848,955
YTD as % of goal	95%	65%	76%	73%
Residential	95%	76%	98%	98%
Low-Income	110%	71%	120%	117%
Commercial & Industrial	72%	41%	49%	46%

