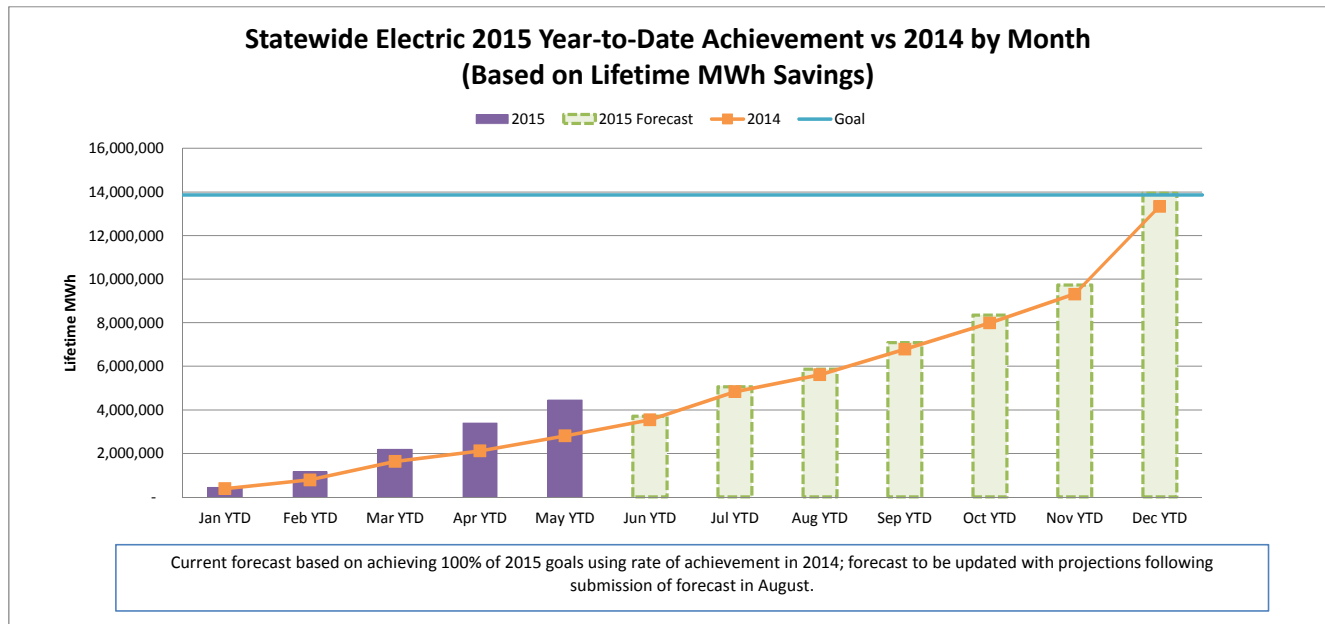
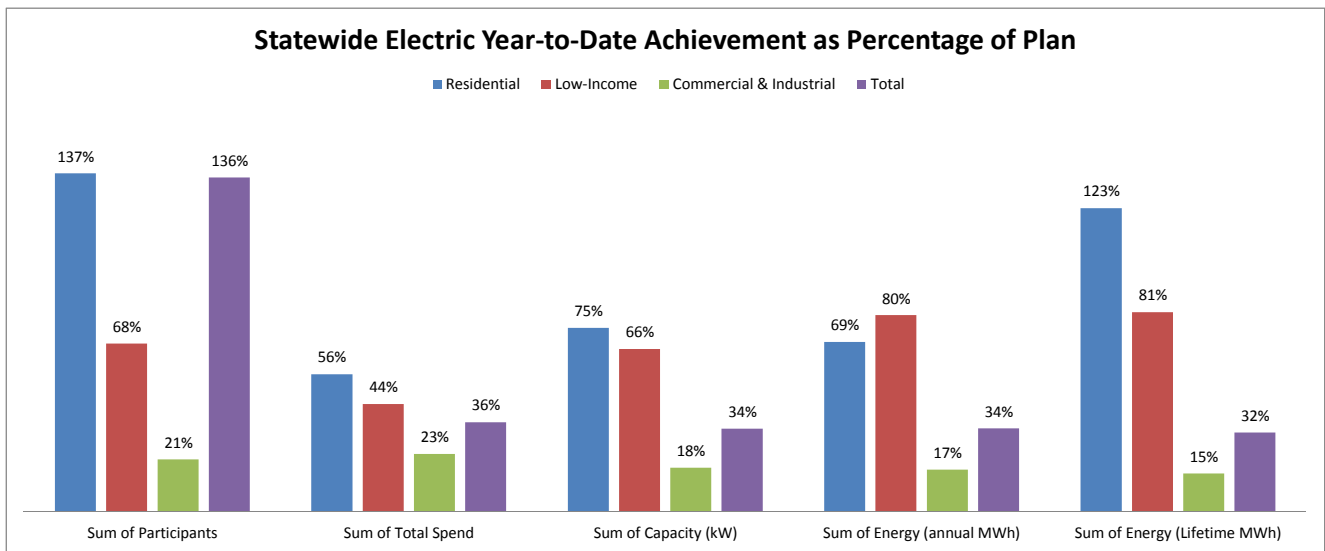


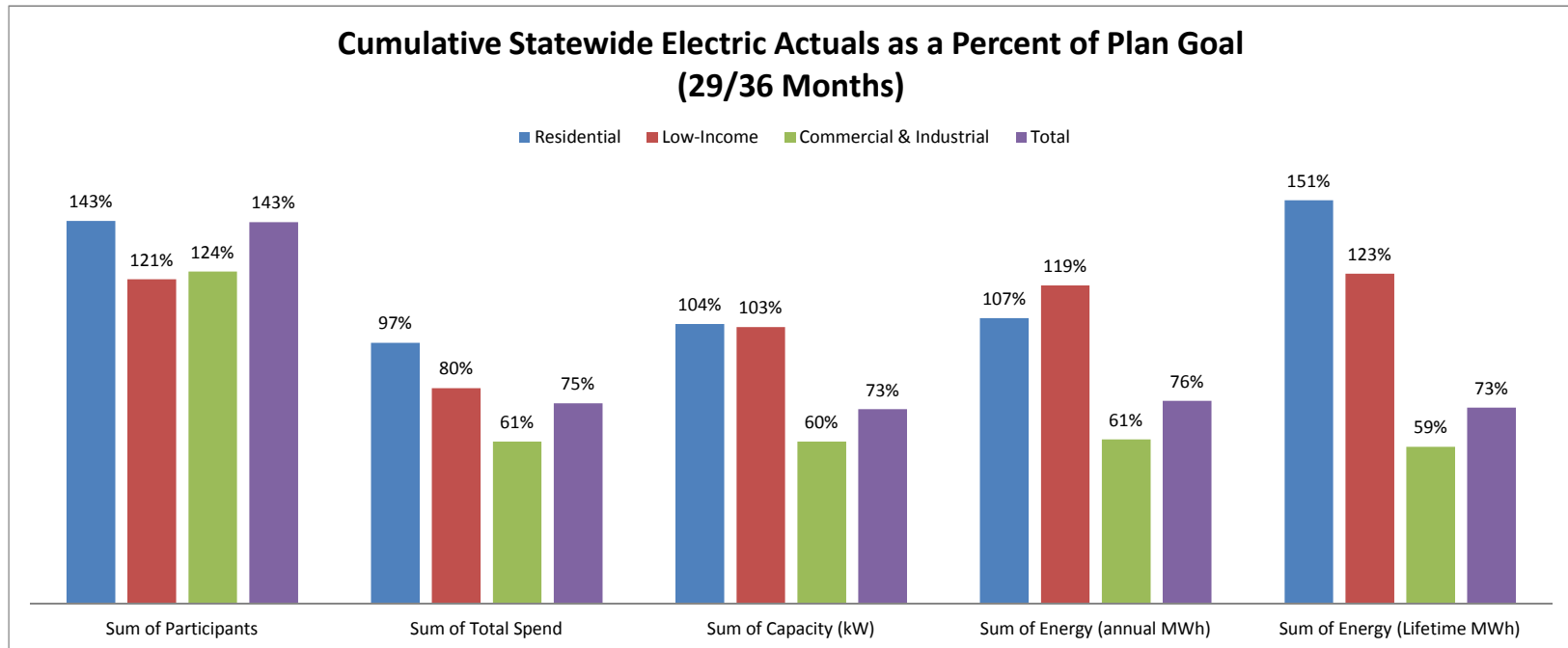
JULY 2015 STATEWIDE ELECTRIC DATA DASHBOARD - FROM JAN 1, 2015 THROUGH MAY 31, 2015

Row Labels	Values				
	Sum of Participants	Sum of Total Spend	Sum of Capacity (kW)	Sum of Energy (annual MWh)	Sum of Energy (Lifetime MWh)
Electric					
Goal	2,350,053	\$ 519,094,445	179,573	1,274,646	13,863,794
Residential	2,306,350	171,322,993	47,313	380,446	1,985,572
Low-Income	27,106	56,913,127	3,245	26,794	254,311
Commercial & Industrial	16,597	290,858,324	129,015	867,407	11,623,911
May YTD	3,187,482	188,109,452	60,449	430,986	4,446,133
Residential	3,165,499	95,459,978	35,291	261,699	2,445,704
Low-Income	18,471	24,864,294	2,142	21,350	205,889
Commercial & Industrial	3,512	67,785,180	23,016	147,937	1,794,540
YTD as % of goal	136%	36%	34%	34%	32%
Residential	137%	56%	75%	69%	123%
Low-Income	68%	44%	66%	80%	81%
Commercial & Industrial	21%	23%	18%	17%	15%



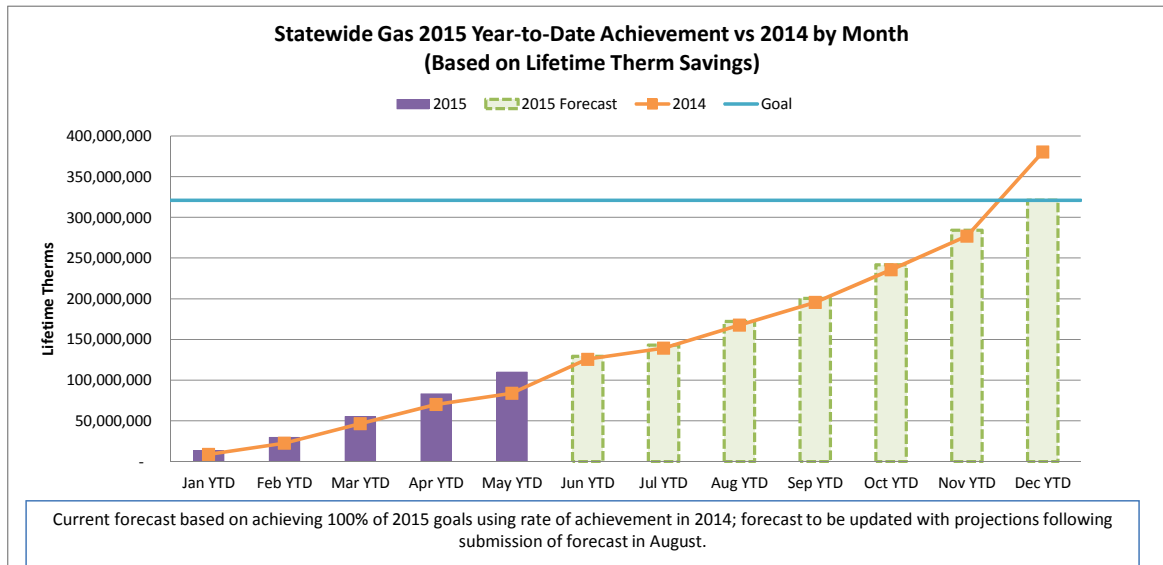
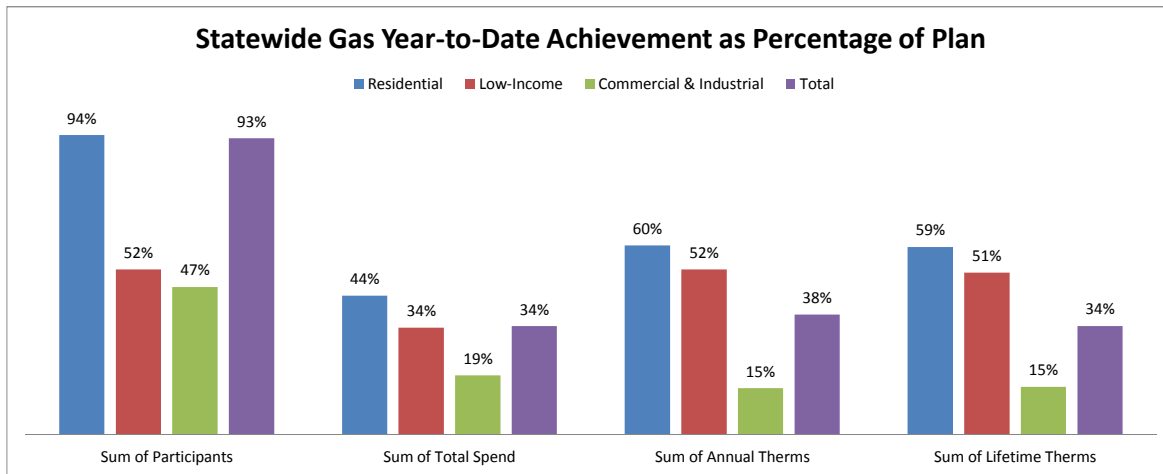
CUMULATIVE STATEWIDE ELECTRIC DATA DASHBOARD - FROM JAN 1, 2013 THROUGH MAY 31, 2015 (29/36 MONTHS)

Row Labels	Values				
	Sum of Participants	Sum of Total Spend	Sum of Capacity (kW)	Sum of Energy (annual MWh)	Sum of Energy (Lifetime MWh)
Electric					
Goal	6,858,617	\$ 1,496,975,555	530,620	3,706,430	40,279,050
Residential	6,726,690	\$ 487,957,884	135,870	1,074,808	5,830,296
Low-Income	82,473	\$ 165,973,664	9,824	83,390	779,383
Commercial & Industrial	49,454	\$ 843,044,007	384,927	2,548,233	33,669,371
May YTD	9,780,176	1,118,968,129	385,001	2,806,765	29,458,900
Residential	9,618,784	475,319,452	141,968	1,146,961	8,790,532
Low-Income	100,006	133,556,574	10,152	99,112	961,286
Commercial & Industrial	61,386	510,092,103	232,880	1,560,691	19,707,082
YTD as % of goal	143%	75%	73%	76%	73%
Residential	143%	97%	104%	107%	151%
Low-Income	121%	80%	103%	119%	123%
Commercial & Industrial	124%	61%	60%	61%	59%



JULY 2015 STATEWIDE GAS DATA DASHBOARD - FROM JAN 1, 2015 THROUGH MAY 31, 2015

Row Labels	Values			
	Sum of Participants	Sum of Total Spend	Sum of Annual Therms	Sum of Lifetime Therms
Gas				
Goal	572,755	\$ 181,214,302	24,951,086	320,982,390
Residential	560,561	\$ 89,390,158	11,605,486	115,703,917
Low-Income	7,009	\$ 37,930,323	1,486,113	29,327,842
Commercial & Industrial	5,185	\$ 53,893,821	11,859,487	175,950,631
May YTD	535,133	62,045,039	9,436,152	109,969,895
Residential	529,070	39,195,040	6,920,905	68,469,274
Low-Income	3,648	12,798,429	774,103	14,970,633
Commercial & Industrial	2,415	10,051,569	1,741,144	26,529,988
YTD as % of goal	93%	34%	38%	34%
Residential	94%	44%	60%	59%
Low-Income	52%	34%	52%	51%
Commercial & Industrial	47%	19%	15%	15%



CUMULATIVE STATEWIDE GAS DATA DASHBOARD - FROM JAN 1, 2013 THROUGH MAY 31, 2015 (29/36 MONTHS)

Row Labels	Values			
	Sum of Participants	Sum of Total Spend	Sum of Annual Therms	Sum of Lifetime Therms
Gas				
Goal	1,682,827	\$ 535,681,984	72,016,443	937,202,858
Residential	1,647,280	\$ 272,430,502	33,504,079	351,323,512
Low-Income	20,494	\$ 108,267,637	4,322,929	85,197,523
Commercial & Industrial	15,053	\$ 154,983,846	34,189,435	500,681,823
May YTD	1,652,579	379,746,893	61,606,888	797,876,403
Residential	1,616,886	219,954,661	35,226,769	388,980,062
Low-Income	24,374	85,679,892	5,691,098	110,194,169
Commercial & Industrial	11,319	74,112,340	20,689,021	298,702,172
YTD as % of goal	98%	71%	86%	85%
Residential	98%	81%	105%	111%
Low-Income	119%	79%	132%	129%
Commercial & Industrial	75%	48%	61%	60%

