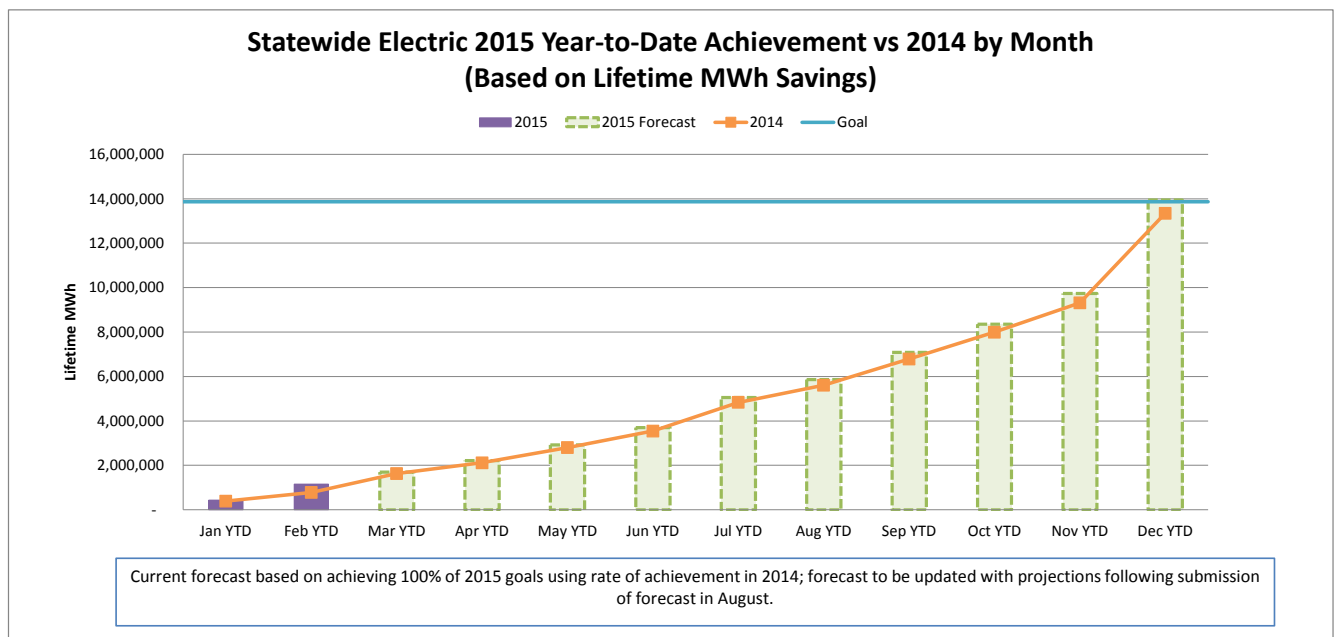
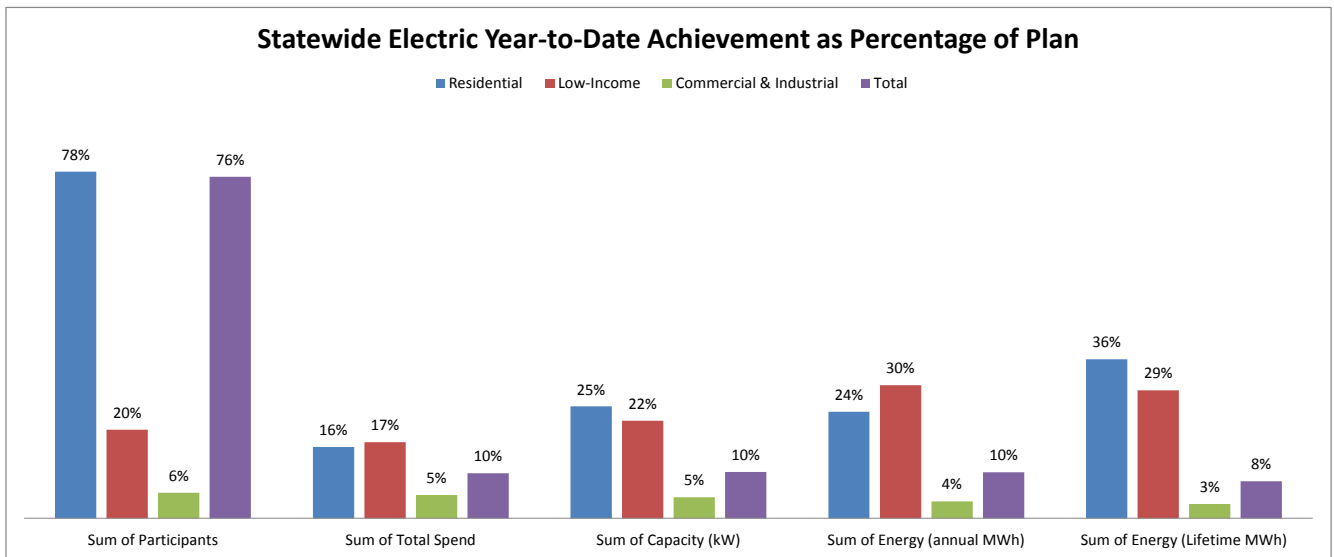


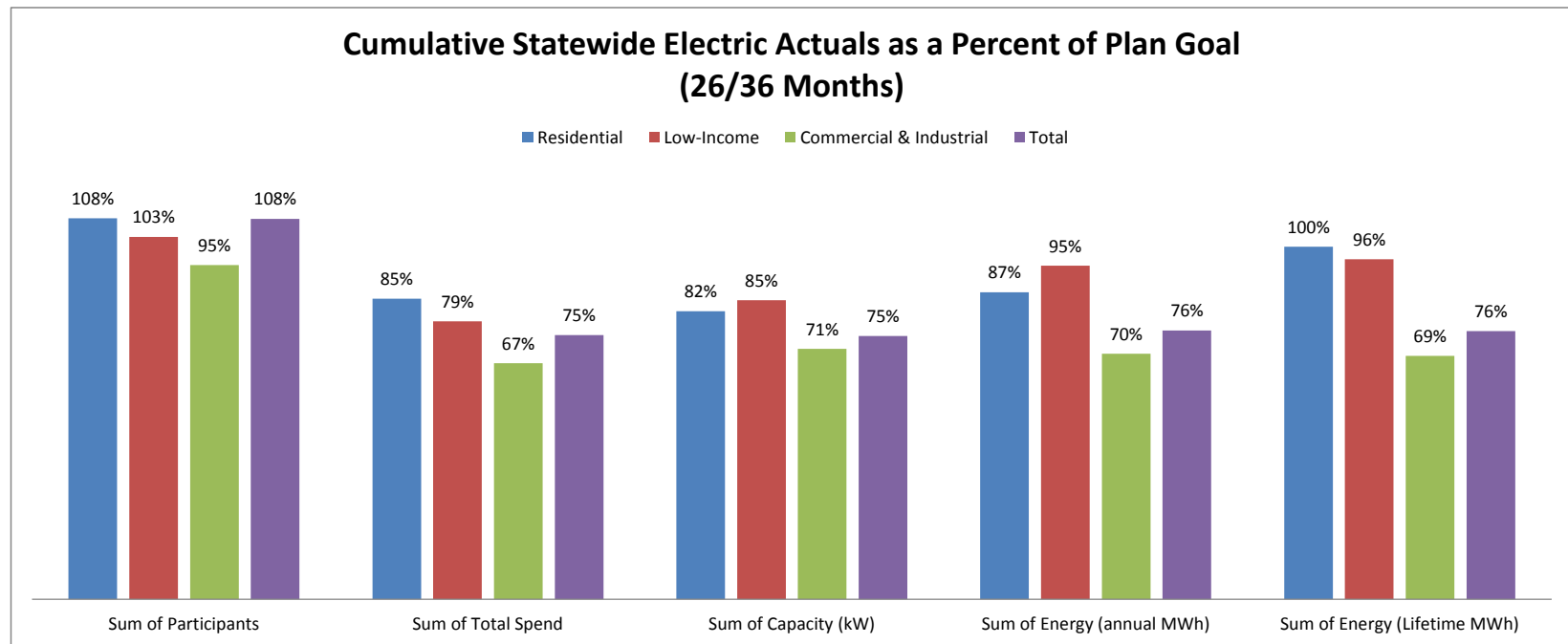
## APRIL 2015 STATEWIDE ELECTRIC DATA DASHBOARD - FROM JAN 1, 2015 THROUGH FEB 28, 2015

Row Labels	Values				
	Sum of Participants	Sum of Total Spend	Sum of Capacity (kW)	Sum of Energy (annual MWh)	Sum of Energy (Lifetime MWh)
<b>Electric</b>					
<b>Goal</b>	<b>2,350,053</b>	<b>\$ 519,094,445</b>	<b>179,573</b>	<b>1,274,646</b>	<b>13,863,794</b>
Residential	2,306,350	171,322,993	47,313	380,446	1,985,572
Low-Income	27,106	56,913,127	3,245	26,794	254,311
Commercial & Industrial	16,597	290,858,324	129,015	867,407	11,623,911
<b>Feb YTD</b>	<b>1,797,712</b>	<b>52,425,212</b>	<b>18,642</b>	<b>131,876</b>	<b>1,156,779</b>
Residential	1,791,375	27,435,252	11,858	90,874	707,058
Low-Income	5,381	9,701,838	709	8,000	73,014
Commercial & Industrial	956	15,288,122	6,075	33,001	376,707
<b>YTD as % of goal</b>	<b>76%</b>	<b>10%</b>	<b>10%</b>	<b>10%</b>	<b>8%</b>
Residential	78%	16%	25%	24%	36%
Low-Income	20%	17%	22%	30%	29%
Commercial & Industrial	6%	5%	5%	4%	3%



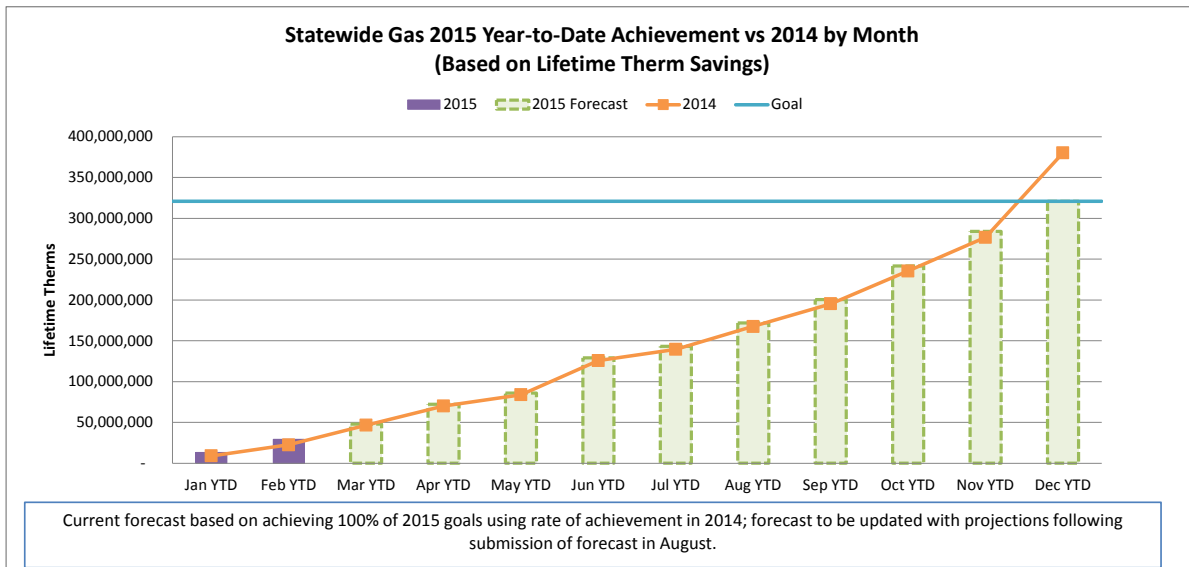
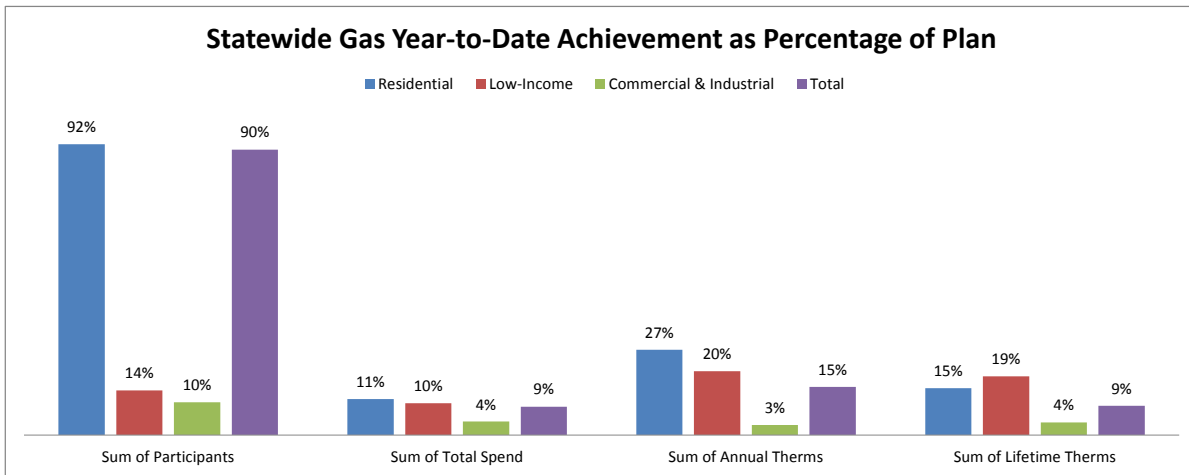
## CUMULATIVE STATEWIDE ELECTRIC DATA DASHBOARD - FROM JAN 1, 2013 THROUGH FEB 28, 2015 (26/36 MONTHS)

Row Labels	Values				
	Sum of Participants	Sum of Total Spend	Sum of Capacity (kW)	Sum of Energy (annual MWh)	Sum of Energy (Lifetime MWh)
<b>Electric</b>					
<b>Goal</b>	<b>7,780,710</b>	<b>\$ 1,313,212,222</b>	<b>459,932</b>	<b>3,291,157</b>	<b>34,417,426</b>
Residential	7,633,971	\$ 478,399,164	145,211	1,121,978	7,057,639
Low-Income	84,627	\$ 150,351,978	10,291	90,744	859,867
Commercial & Industrial	62,112	\$ 684,461,080	304,429	2,078,435	26,499,920
<b>Feb YTD</b>	<b>8,390,406</b>	<b>983,283,888</b>	<b>343,193</b>	<b>2,507,654</b>	<b>26,169,546</b>
Residential	8,244,660	407,294,726	118,535	976,137	7,051,886
Low-Income	86,916	118,394,118	8,719	85,762	828,411
Commercial & Industrial	58,830	457,595,044	215,939	1,445,755	18,289,249
<b>YTD as % of goal</b>	<b>108%</b>	<b>75%</b>	<b>75%</b>	<b>76%</b>	<b>76%</b>
Residential	108%	85%	82%	87%	100%
Low-Income	103%	79%	85%	95%	96%
Commercial & Industrial	95%	67%	71%	70%	69%



## APRIL 2015 STATEWIDE GAS DATA DASHBOARD - FROM JAN 1, 2015 THROUGH FEB 28, 2015

Row Labels	Values			
	Sum of Participants	Sum of Total Spend	Sum of Annual Therms	Sum of Lifetime Therms
<b>Gas</b>				
<b>Goal</b>	<b>572,755</b>	<b>\$ 181,214,302</b>	<b>24,951,086</b>	<b>320,982,390</b>
Residential	560,561	\$ 89,390,158	11,605,486	115,703,917
Low-Income	7,009	\$ 37,930,323	1,486,113	29,327,842
Commercial & Industrial	5,185	\$ 53,893,821	11,859,487	175,950,631
<b>Feb YTD</b>	<b>514,910</b>	<b>16,230,293</b>	<b>3,786,698</b>	<b>29,478,639</b>
Residential	513,389	10,162,455	3,117,330	17,131,339
Low-Income	988	3,789,529	298,250	5,432,182
Commercial & Industrial	533	2,278,309	371,118	6,915,118
<b>YTD as % of goal</b>	<b>90%</b>	<b>9%</b>	<b>15%</b>	<b>9%</b>
Residential	92%	11%	27%	15%
Low-Income	14%	10%	20%	19%
Commercial & Industrial	10%	4%	3%	4%



## CUMULATIVE STATEWIDE GAS DATA DASHBOARD - FROM JAN 1, 2013 THROUGH FEB 28, 2015 (26/36 MONTHS )

Row Labels	Values			
	Sum of Participants	Sum of Total Spend	Sum of Annual Therms	Sum of Lifetime Therms
<b>Gas</b>				
<b>Goal</b>	<b>1,671,358</b>	<b>\$ 526,943,013</b>	<b>75,860,247</b>	<b>1,004,777,539</b>
Residential	1,633,285	\$ 278,898,814	37,029,070	406,921,590
Low-Income	24,387	\$ 110,637,192	5,515,304	107,932,469
Commercial & Industrial	13,687	\$ 137,407,007	33,315,874	489,923,480
<b>Feb YTD</b>	<b>1,632,356</b>	<b>333,932,147</b>	<b>55,957,434</b>	<b>717,385,147</b>
Residential	1,601,205	190,922,076	31,423,194	337,642,126
Low-Income	21,714	76,670,991	5,215,245	100,655,718
Commercial & Industrial	9,437	66,339,080	19,318,995	279,087,302
<b>YTD as % of goal</b>	<b>98%</b>	<b>63%</b>	<b>74%</b>	<b>71%</b>
Residential	98%	68%	85%	83%
Low-Income	89%	69%	95%	93%
Commercial & Industrial	69%	48%	58%	57%

