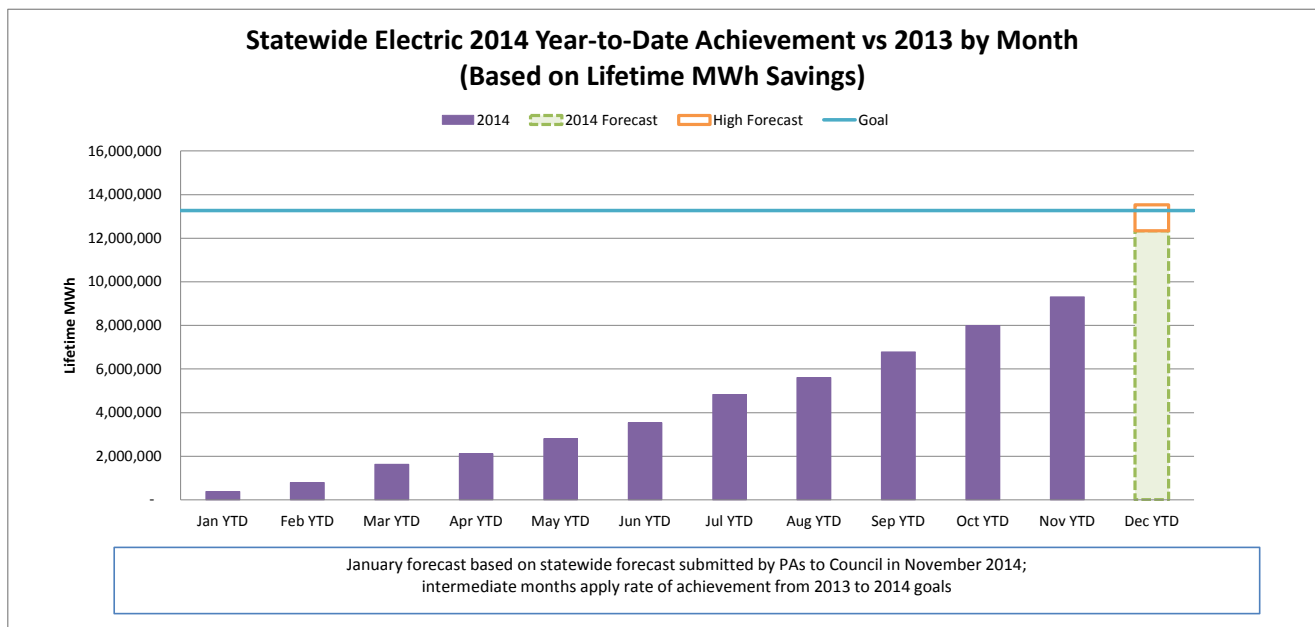
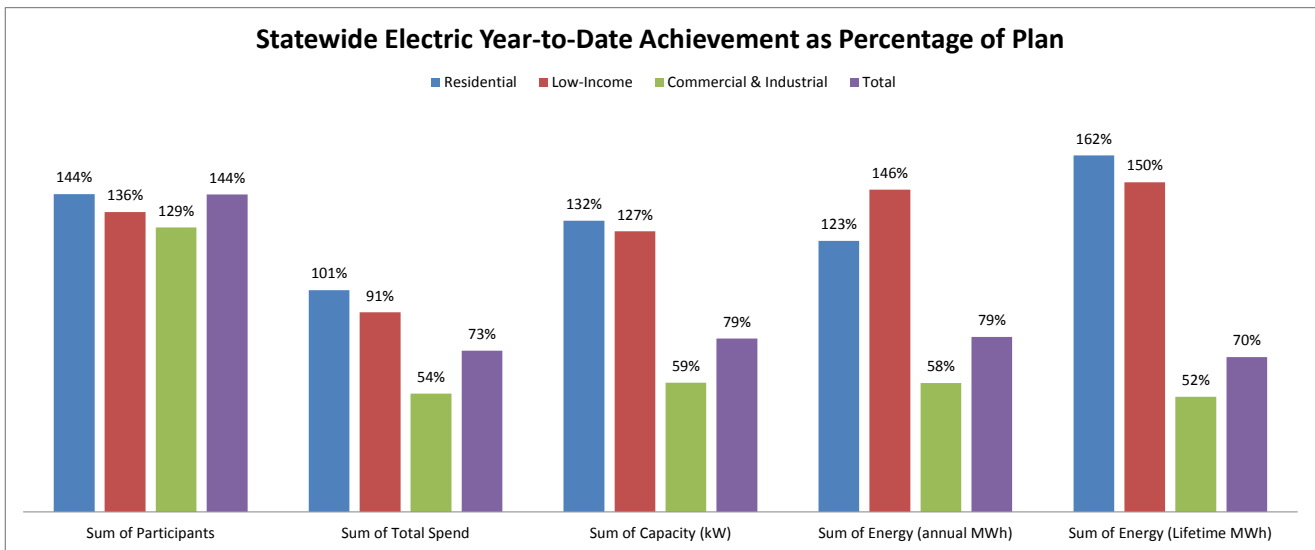


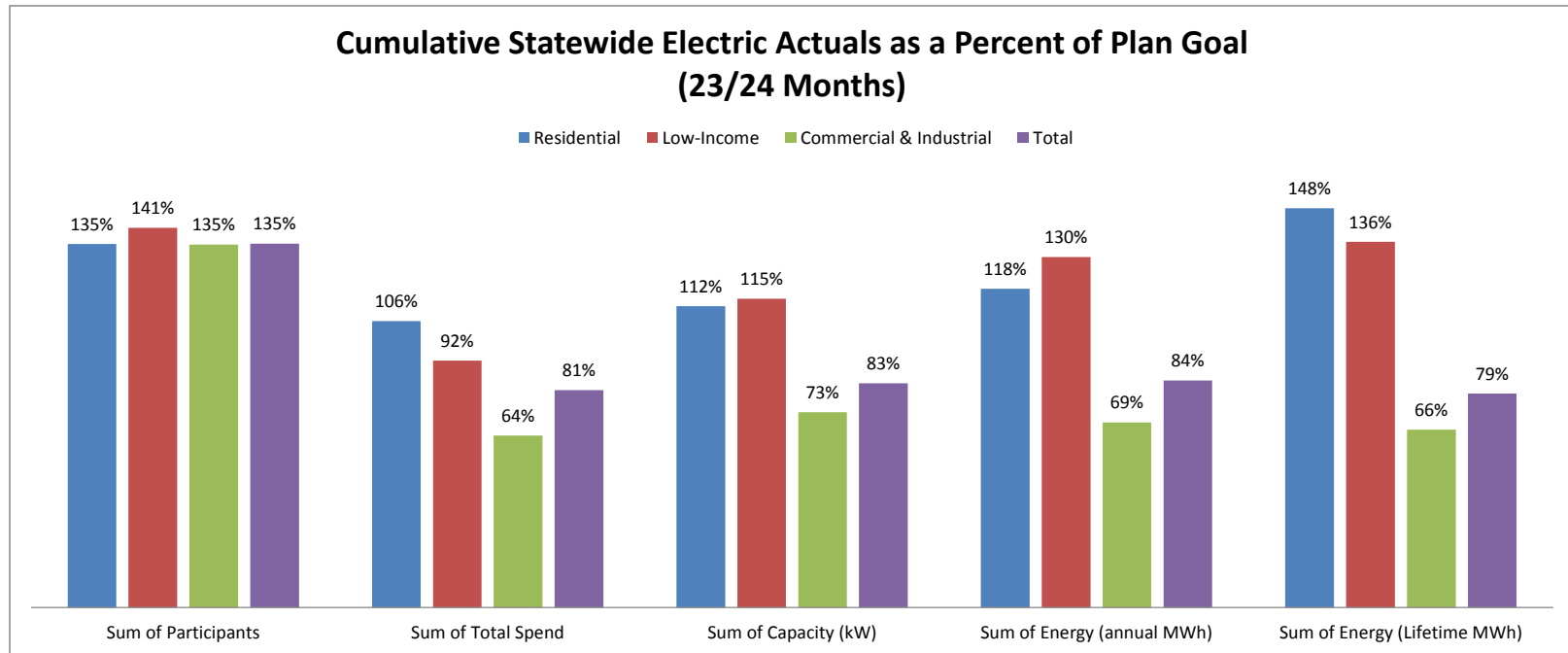
JANUARY 2015 STATEWIDE ELECTRIC DATA DASHBOARD - FROM JAN 1, 2014 THROUGH NOV 30, 2014

Row Labels	Values				
	Sum of Participants	Sum of Total Spend	Sum of Capacity (kW)	Sum of Energy (annual MWh)	Sum of Energy (Lifetime MWh)
Electric					
Goal	2,303,685	\$ 496,018,277	177,696	1,236,598	13,268,628
Residential	2,259,817	\$ 162,852,400	45,584	364,571	1,952,344
Low-Income	27,488	\$ 54,923,703	3,246	27,759	260,056
Commercial & Industrial	16,380	\$ 278,242,174	128,866	844,268	11,056,228
Nov YTD	3,317,310	363,002,877	139,852	982,196	9,316,540
Residential	3,258,789	163,869,232	60,191	448,383	3,157,193
Low-Income	37,375	49,722,486	4,132	40,600	388,930
Commercial & Industrial	21,146	149,411,160	75,529	493,212	5,770,417
YTD as % of goal	144%	73%	79%	79%	70%
Residential	144%	101%	132%	123%	162%
Low-Income	136%	91%	127%	146%	150%
Commercial & Industrial	129%	54%	59%	58%	52%



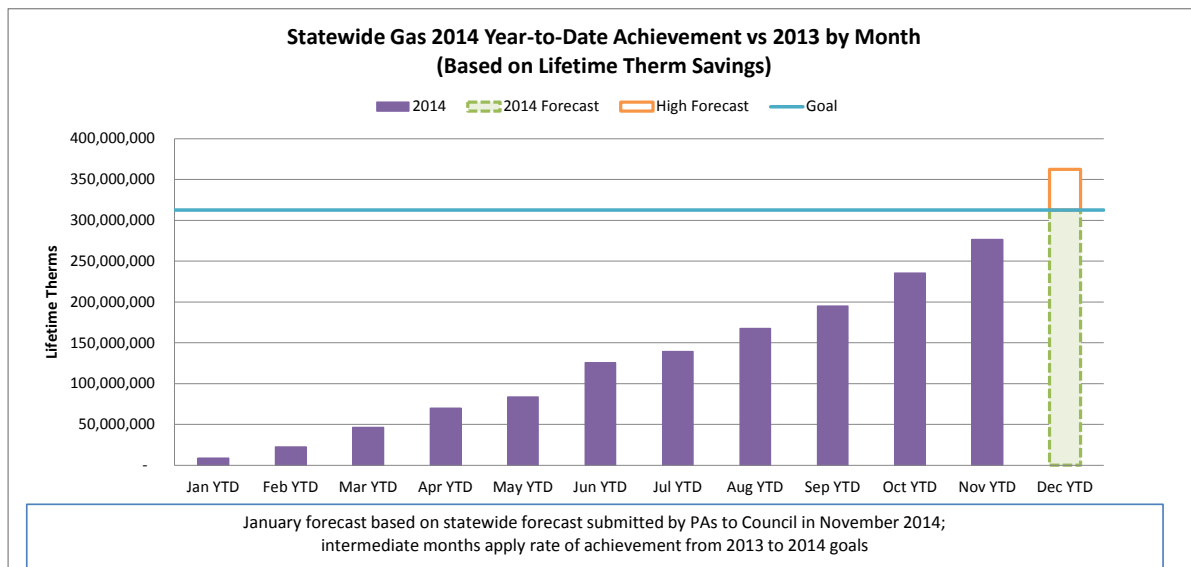
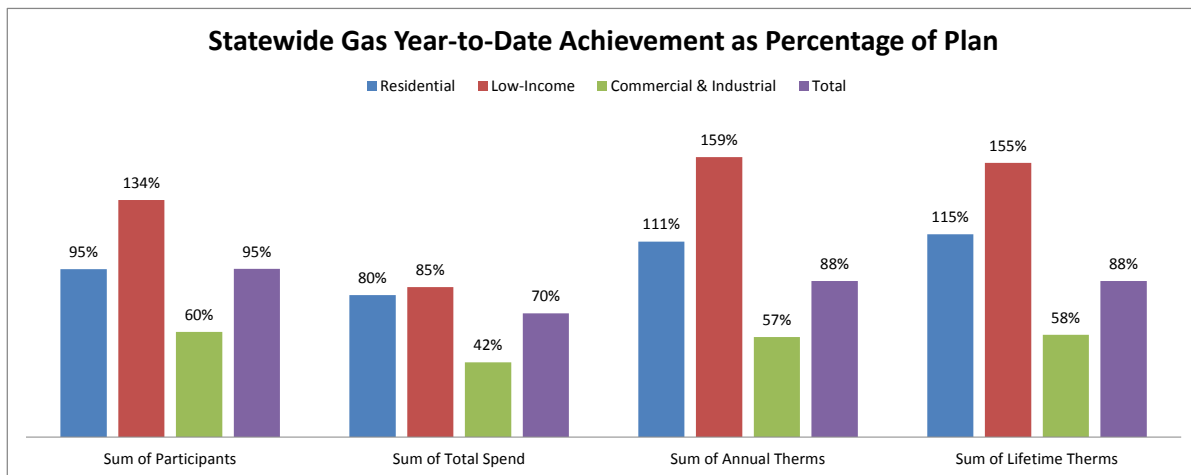
CUMULATIVE STATEWIDE ELECTRIC DATA DASHBOARD - FROM JAN 1, 2013 THROUGH NOV 30, 2014 (23/24 MONTHS)

Row Labels	Values				
	Sum of Participants	Sum of Total Spend	Sum of Capacity (kW)	Sum of Energy (annual MWh)	Sum of Energy (Lifetime MWh)
Electric					
Goal	4,508,565	\$ 977,881,110	351,047	2,431,784	26,415,256
Residential	4,420,340	\$ 316,634,891	88,557	694,361	3,844,724
Low-Income	55,367	\$ 109,060,537	6,579	56,596	525,072
Commercial & Industrial	32,857	\$ 552,185,683	255,912	1,680,826	22,045,460
Nov YTD	6,093,582	790,107,658	292,425	2,051,167	20,989,603
Residential	5,971,196	336,977,380	99,184	822,270	5,705,176
Low-Income	78,099	100,056,350	7,548	73,674	713,146
Commercial & Industrial	44,287	353,073,928	185,693	1,155,222	14,571,282
YTD as % of goal	135%	81%	83%	84%	79%
Residential	135%	106%	112%	118%	148%
Low-Income	141%	92%	115%	130%	136%
Commercial & Industrial	135%	64%	73%	69%	66%



JANUARY 2015 STATEWIDE GAS DATA DASHBOARD - FROM JAN 1, 2014 THROUGH NOV 30, 2014

Row Labels	Values			
	Sum of Participants	Sum of Total Spend	Sum of Annual Therms	Sum of Lifetime Therms
Gas				
Goal	560,883	\$ 174,635,473	24,402,858	312,695,505
Residential	549,030	\$ 86,902,669	11,607,811	119,006,291
Low-Income	6,840	\$ 35,928,339	1,439,072	28,354,752
Commercial & Industrial	5,014	\$ 51,804,465	11,355,975	165,334,462
Nov YTD	534,662	122,386,787	21,582,320	276,718,199
Residential	522,490	69,932,676	12,865,866	136,796,172
Low-Income	9,188	30,515,271	2,283,863	44,067,212
Commercial & Industrial	2,984	21,938,840	6,432,591	95,854,816
YTD as % of goal	95%	70%	88%	88%
Residential	95%	80%	111%	115%
Low-Income	134%	85%	159%	155%
Commercial & Industrial	60%	42%	57%	58%



CUMULATIVE STATEWIDE GAS DATA DASHBOARD - FROM JAN 1, 2013 THROUGH NOV 30, 2014 (23/24 MONTHS)

Row Labels	Values			
	Sum of Participants	Sum of Total Spend	Sum of Annual Therms	Sum of Lifetime Therms
Gas				
Goal	1,110,071	\$ 343,115,888	47,065,357	616,220,468
Residential	1,086,719	\$ 171,688,550	21,898,593	235,619,595
Low-Income	13,484	\$ 70,337,314	2,836,815	55,869,681
Commercial & Industrial	9,868	\$ 101,090,025	22,329,948	324,731,192
Nov YTD	1,102,693	274,192,140	45,506,393	584,354,521
Residential	1,075,272	157,321,315	26,038,928	282,702,590
Low-Income	19,181	65,098,839	4,569,411	88,201,050
Commercial & Industrial	8,240	51,771,986	14,898,054	213,450,881
YTD as % of goal	99%	80%	97%	95%
Residential	99%	92%	119%	120%
Low-Income	142%	93%	161%	158%
Commercial & Industrial	84%	51%	67%	66%

