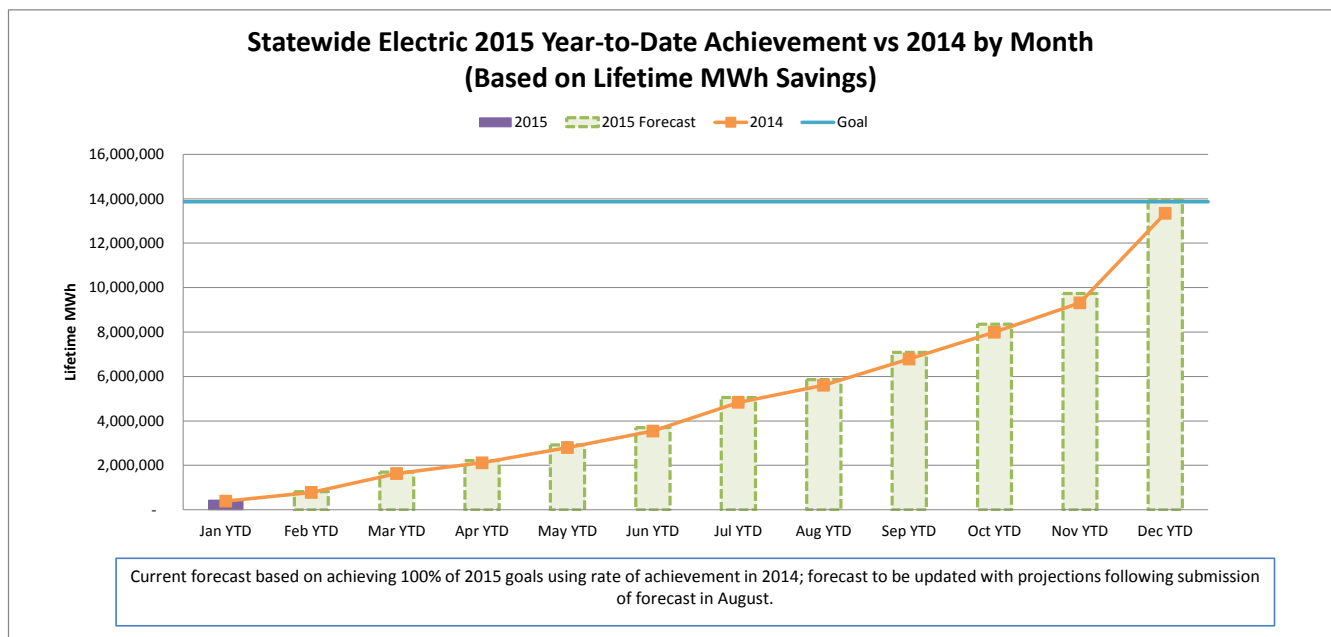
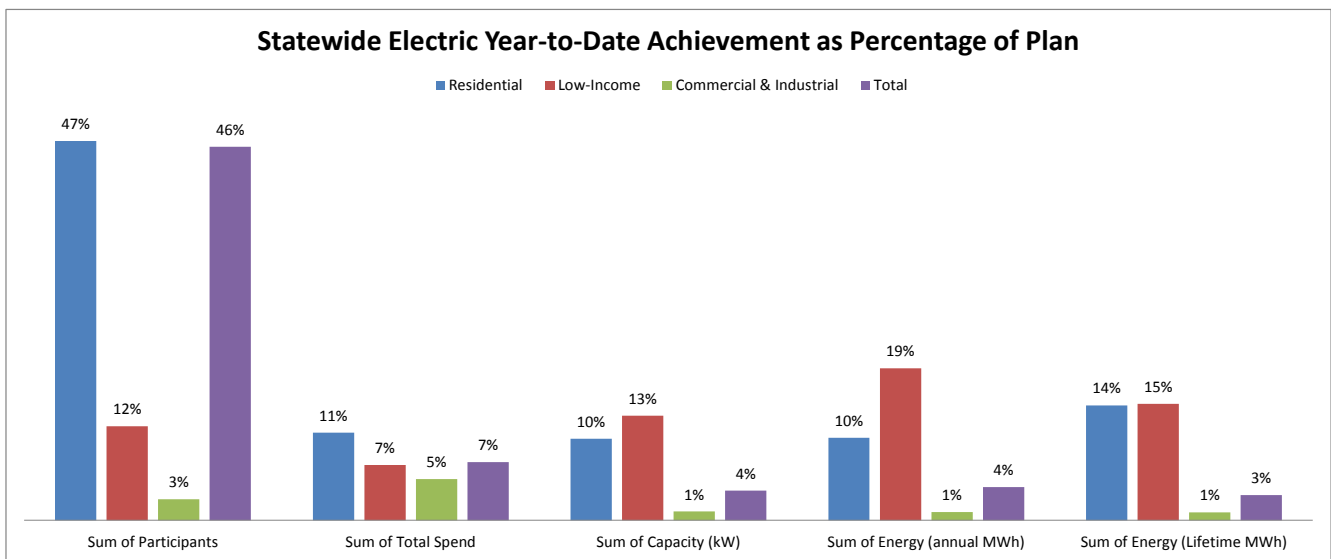


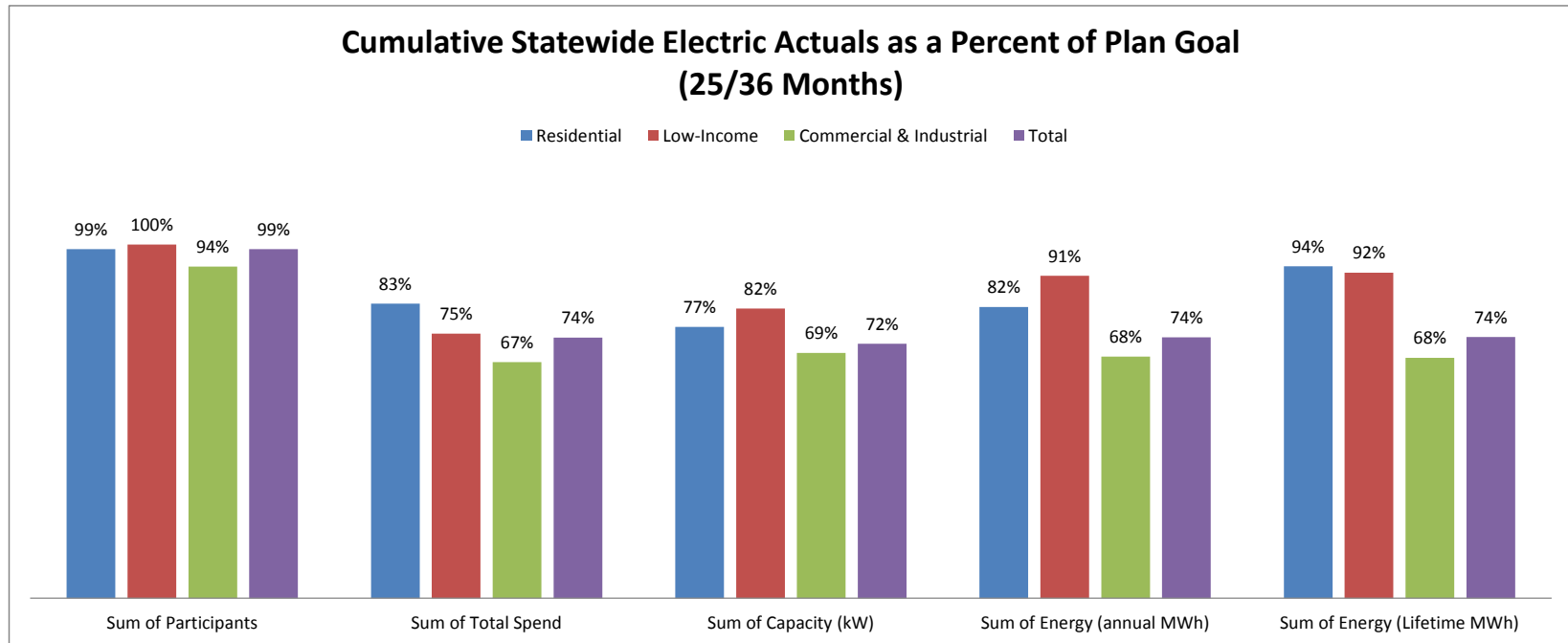
MARCH 2015 STATEWIDE ELECTRIC DATA DASHBOARD - FROM JAN 1, 2015 THROUGH JAN 31, 2015

Row Labels	Values				
	Sum of Participants	Sum of Total Spend	Sum of Capacity (kW)	Sum of Energy (annual MWh)	Sum of Energy (Lifetime MWh)
Electric					
Goal	2,350,053	\$ 519,094,445	179,573	1,274,646	13,863,794
Residential	2,306,350	171,322,993	47,313	380,446	1,985,572
Low-Income	27,106	56,913,127	3,245	26,794	254,311
Commercial & Industrial	16,597	290,858,324	129,015	867,407	11,623,911
Jan YTD	1,092,659	37,584,424	6,656	52,930	435,648
Residential	1,089,048	18,727,758	4,806	39,101	284,215
Low-Income	3,177	3,924,191	422	5,068	36,922
Commercial & Industrial	434	14,932,475	1,428	8,762	114,511
YTD as % of goal	46%	7%	4%	4%	3%
Residential	47%	11%	10%	10%	14%
Low-Income	12%	7%	13%	19%	15%
Commercial & Industrial	3%	5%	1%	1%	1%



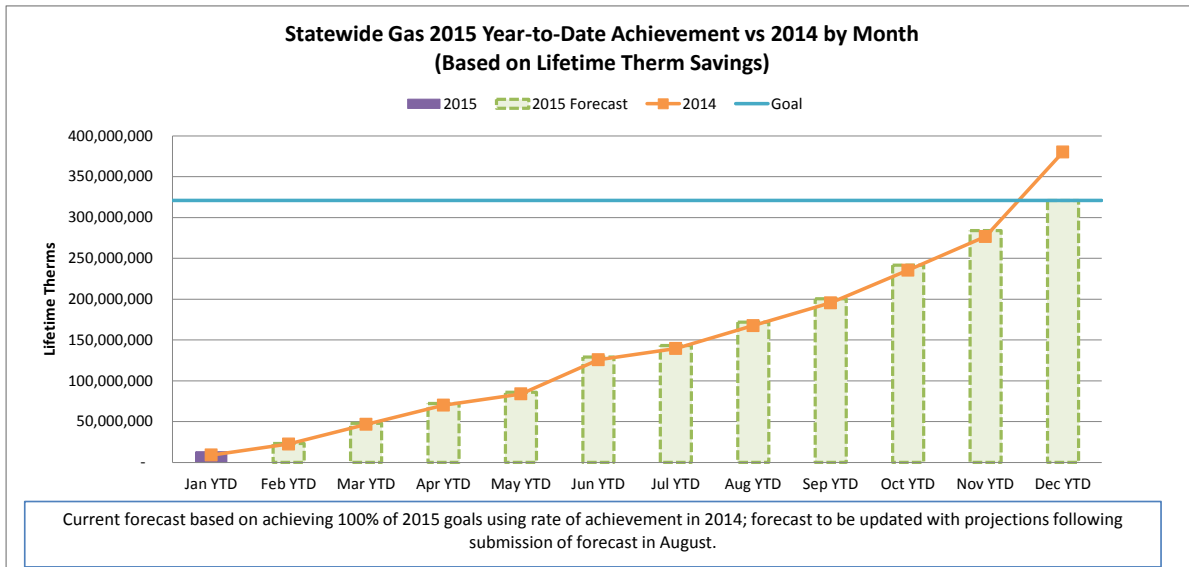
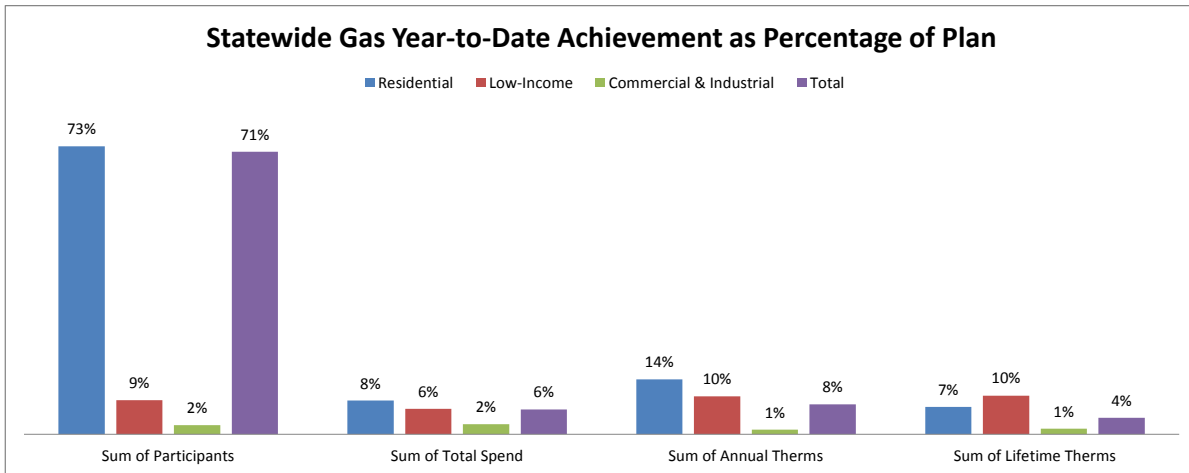
CUMULATIVE STATEWIDE ELECTRIC DATA DASHBOARD - FROM JAN 1, 2013 THROUGH JAN 31, 2015 (25/36 MONTHS)

Row Labels	Values				
	Sum of Participants	Sum of Total Spend	Sum of Capacity (kW)	Sum of Energy (annual MWh)	Sum of Energy (Lifetime MWh)
Electric					
Goal	7,780,710	\$ 1,313,212,222	459,932	3,291,157	34,417,426
Residential	7,633,971	\$ 478,399,164	145,211	1,121,978	7,057,639
Low-Income	84,627	\$ 150,351,978	10,291	90,744	859,867
Commercial & Industrial	62,112	\$ 684,461,080	304,429	2,078,435	26,499,920
Jan YTD	7,685,353	968,443,100	331,208	2,428,709	25,448,415
Residential	7,542,333	398,587,232	111,483	924,363	6,629,043
Low-Income	84,712	112,616,471	8,433	82,830	792,319
Commercial & Industrial	58,308	457,239,397	211,293	1,421,516	18,027,053
YTD as % of goal	99%	74%	72%	74%	74%
Residential	99%	83%	77%	82%	94%
Low-Income	100%	75%	82%	91%	92%
Commercial & Industrial	94%	67%	69%	68%	68%



MARCH 2015 STATEWIDE GAS DATA DASHBOARD - FROM JAN 1, 2015 THROUGH JAN 31, 2015

Row Labels	Values			
	Sum of Participants	Sum of Total Spend	Sum of Annual Therms	Sum of Lifetime Therms
Gas				
Goal	572,755	\$ 181,214,302	\$ 24,951,086	320,982,390
Residential	560,561	\$ 89,390,158	11,605,486	115,703,917
Low-Income	7,009	\$ 37,930,323	1,486,113	29,327,842
Commercial & Industrial	5,185	\$ 53,893,821	11,859,487	175,950,631
Jan YTD	407,347	11,326,166	1,881,731	13,276,819
Residential	406,630	7,567,120	1,605,565	7,952,934
Low-Income	600	2,416,850	141,370	2,853,644
Commercial & Industrial	117	1,342,196	134,795	2,470,240
YTD as % of goal	71%	6%	8%	4%
Residential	73%	8%	14%	7%
Low-Income	9%	6%	10%	10%
Commercial & Industrial	2%	2%	1%	1%



CUMULATIVE STATEWIDE GAS DATA DASHBOARD - FROM JAN 1, 2013 THROUGH JAN 31, 2015 (25/36 MONTHS)

Row Labels	Values			
	Sum of Participants	Sum of Total Spend	Sum of Annual Therms	Sum of Lifetime Therms
Gas				
Goal	1,671,358	\$ 526,943,013	75,860,247	1,004,777,539
Residential	1,633,285	\$ 278,898,814	37,029,070	406,921,590
Low-Income	24,387	\$ 110,637,192	5,515,304	107,932,469
Commercial & Industrial	13,687	\$ 137,407,007	33,315,874	489,923,480
Jan YTD	1,524,793	329,028,020	54,052,467	701,183,326
Residential	1,494,446	188,326,741	29,911,429	328,463,722
Low-Income	21,326	75,298,313	5,058,366	98,077,180
Commercial & Industrial	9,021	65,402,967	19,082,672	274,642,424
YTD as % of goal	91%	62%	71%	70%
Residential	91%	68%	81%	81%
Low-Income	87%	68%	92%	91%
Commercial & Industrial	66%	48%	57%	56%

