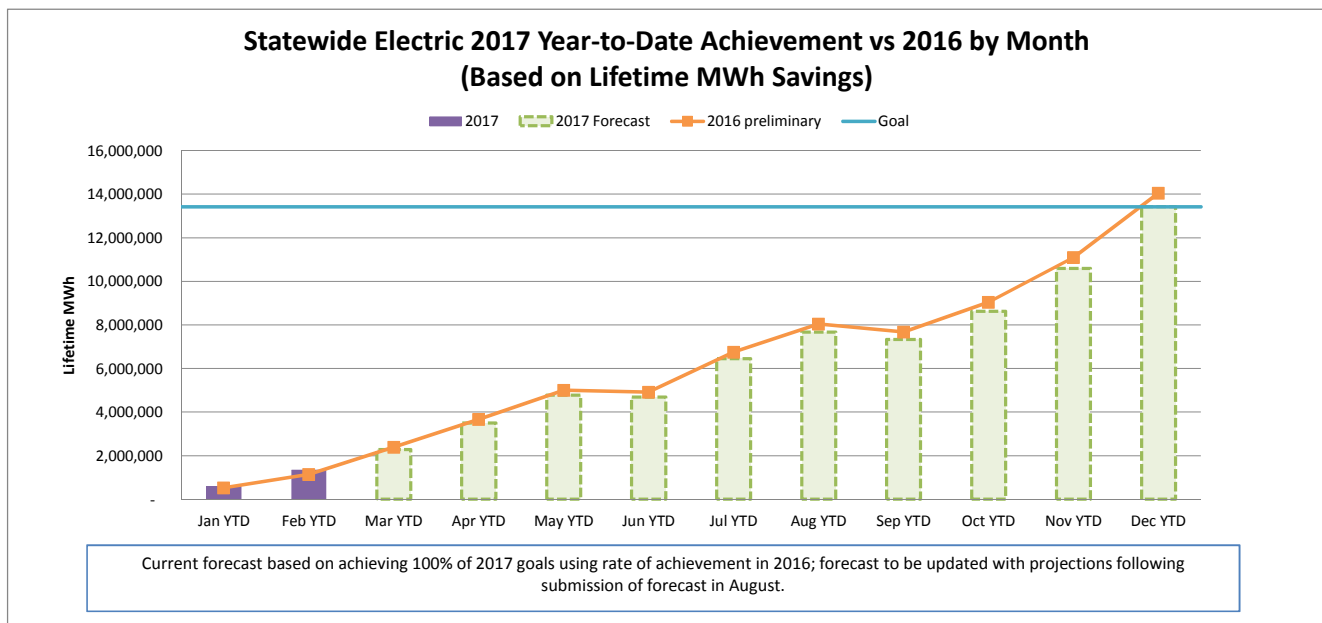
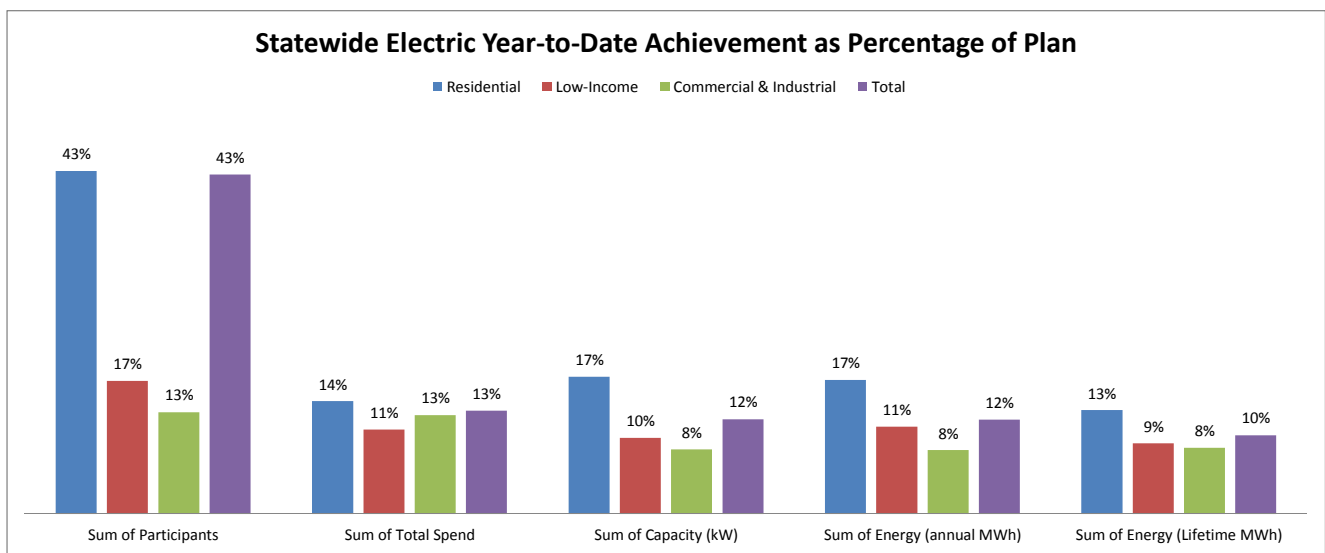


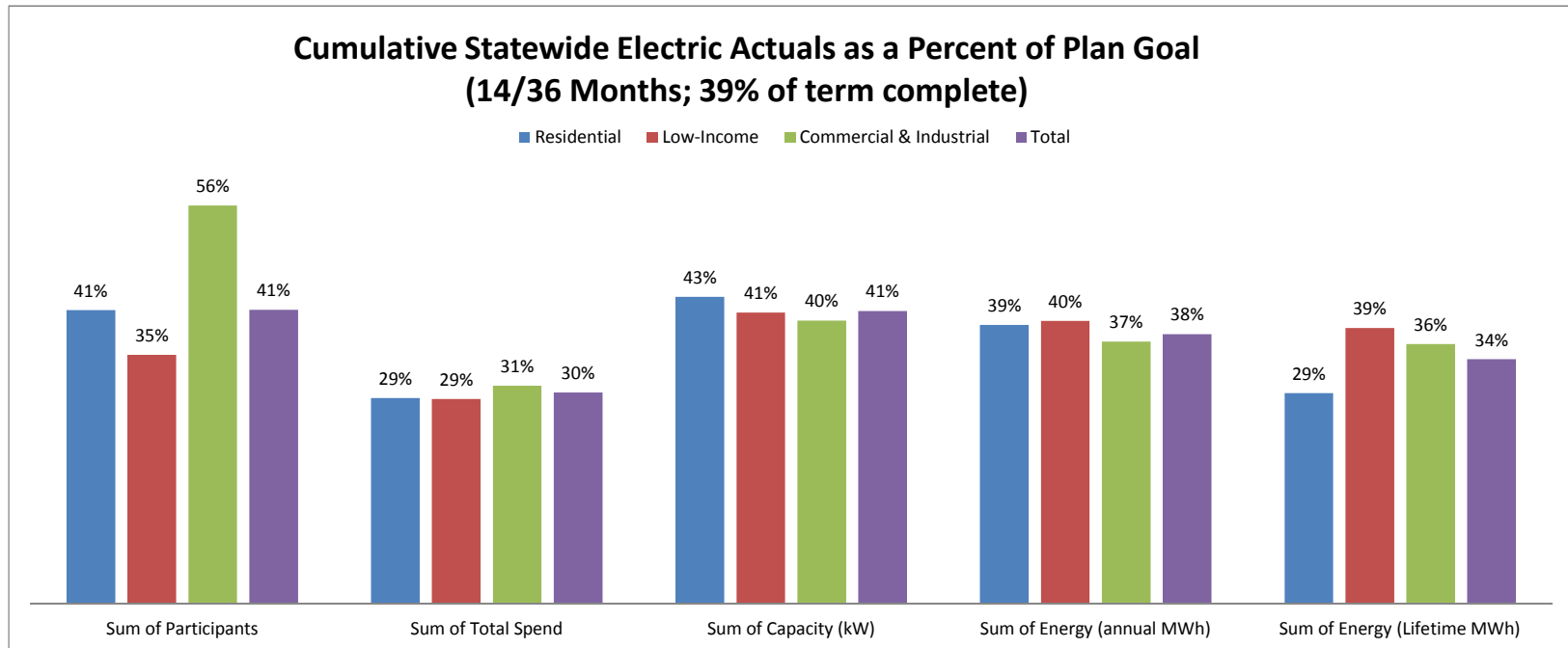
APRIL 2017 STATEWIDE ELECTRIC DATA DASHBOARD - FROM JAN 1, 2017 THROUGH FEB 28, 2017

Row Labels	Values				
	Sum of Participants	Sum of Total Spend	Sum of Capacity (kW)	Sum of Energy (annual MWh)	Sum of Energy (Lifetime MWh)
Electric					
Goal	3,650,544	\$ 621,237,929	192,937	1,374,065	13,421,472
Residential	3,593,671	270,393,188	79,313	584,087	4,475,067
Low-Income	31,989	68,098,932	4,658	39,211	340,877
Commercial & Industrial	24,884	282,745,809	108,966	750,767	8,605,528
Feb YTD	1,571,702	81,472,247	23,195	164,563	1,341,268
Residential	1,563,086	38,694,609	13,798	99,400	589,477
Low-Income	5,403	7,299,300	449	4,342	30,497
Commercial & Industrial	3,213	35,478,338	8,948	60,822	721,294
YTD as % of goal	43%	13%	12%	12%	10%
Residential	43%	14%	17%	17%	13%
Low-Income	17%	11%	10%	11%	9%
Commercial & Industrial	13%	13%	8%	8%	8%



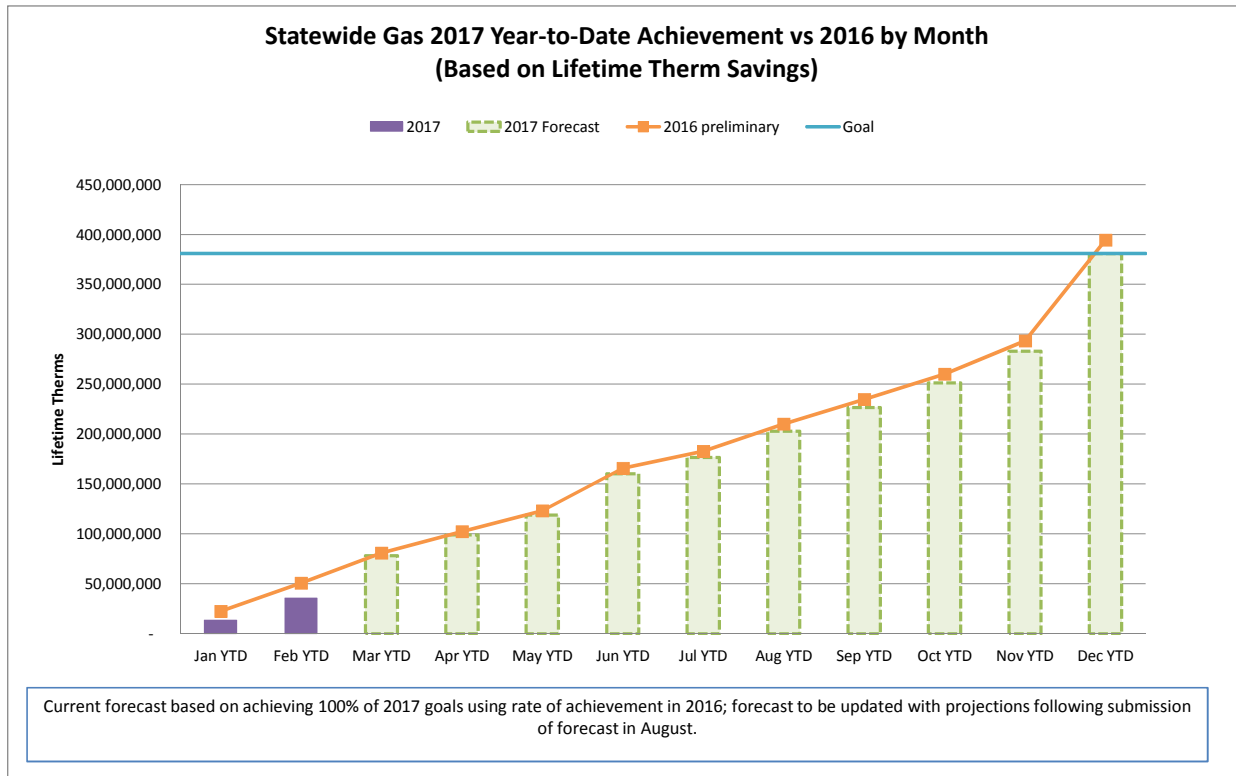
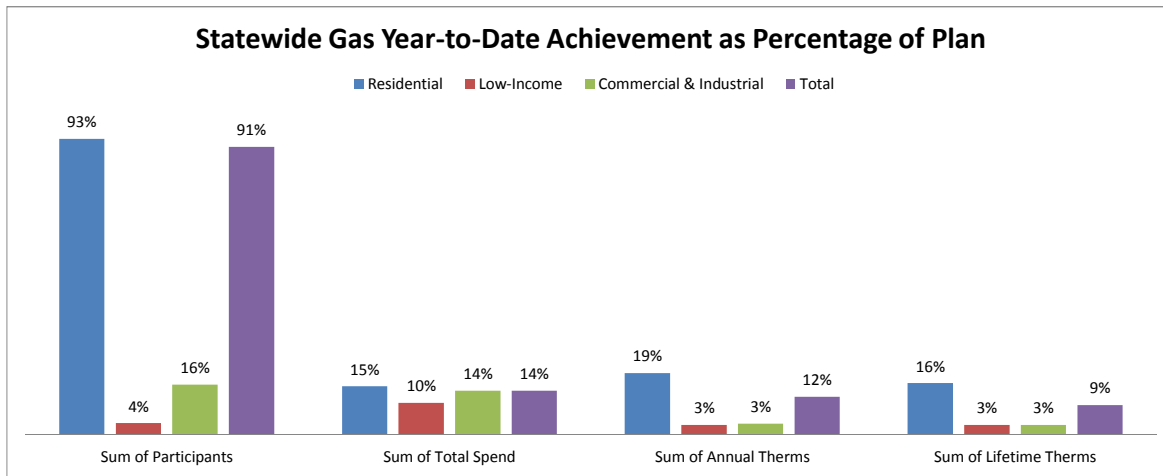
CUMULATIVE STATEWIDE ELECTRIC DATA DASHBOARD - FROM JAN 1, 2016 THROUGH FEB 28, 2017 (14/36 MONTHS; 39% of term complete)

Row Labels	Values				
	Sum of Participants	Sum of Total Spend	Sum of Capacity (kW)	Sum of Energy (annual MWh)	Sum of Energy (Lifetime MWh)
Electric					
Goal	10,806,363	\$ 1,880,362,093	578,200	4,123,339	41,070,944
Residential	10,635,366	\$ 816,165,146	231,583	1,697,233	13,102,747
Low-Income	96,127	\$ 204,036,648	13,890	116,624	1,026,558
Commercial & Industrial	74,870	\$ 860,160,299	332,727	2,309,482	26,941,639
Feb YTD	4,450,646	555,835,094	237,140	1,556,019	14,056,410
Residential	4,375,349	234,773,512	99,534	662,469	3,861,352
Low-Income	33,513	58,472,311	5,662	46,209	396,234
Commercial & Industrial	41,784	262,589,271	131,943	847,341	9,798,824
YTD as % of goal	41%	30%	41%	38%	34%
Residential	41%	29%	43%	39%	29%
Low-Income	35%	29%	41%	40%	39%
Commercial & Industrial	56%	31%	40%	37%	36%



APRIL 2017 STATEWIDE GAS DATA DASHBOARD - FROM JAN 1, 2017 THROUGH FEB 28, 2017

Row Labels	Values			
	Sum of Participants	Sum of Total Spend	Sum of Annual Therms	Sum of Lifetime Therms
Gas				
Goal	586,896	\$ 221,747,647	28,504,378	380,806,813
Residential	569,649	\$ 131,598,896	15,185,401	181,611,424
Low-Income	10,725	\$ 45,050,282	2,061,663	40,903,623
Commercial & Industrial	6,522	\$ 45,098,469	11,257,314	158,291,766
Feb YTD	532,560	30,829,300	3,405,558	35,568,821
Residential	531,144	20,077,505	2,951,402	29,472,792
Low-Income	388	4,510,666	63,752	1,270,525
Commercial & Industrial	1,028	6,241,129	390,404	4,825,504
YTD as % of goal	91%	14%	12%	9%
Residential	93%	15%	19%	16%
Low-Income	4%	10%	3%	3%
Commercial & Industrial	16%	14%	3%	3%



CUMULATIVE STATEWIDE GAS DATA DASHBOARD - FROM JAN 1, 2016 THROUGH FEB 28, 2017 (14/36 MONTHS; 39% of term complete)

Row Labels	Values			
	Sum of Participants	Sum of Total Spend	Sum of Annual Therms	Sum of Lifetime Therms
Gas				
Goal	1,761,480	\$ 671,390,680	86,219,141	1,153,709,247
Residential	1,709,461	\$ 398,714,379	45,891,837	551,936,831
Low-Income	32,305	\$ 135,833,233	6,199,557	123,006,755
Commercial & Industrial	19,714	\$ 136,843,068	34,127,747	478,765,661
Feb YTD	558,350	201,826,008	28,424,005	394,523,246
Residential	537,591	118,796,291	15,736,222	205,051,238
Low-Income	12,087	39,267,844	1,901,536	37,398,146
Commercial & Industrial	8,672	43,761,874	10,786,246	152,073,861
YTD as % of goal	32%	30%	33%	34%
Residential	31%	30%	34%	37%
Low-Income	37%	29%	31%	30%
Commercial & Industrial	44%	32%	32%	32%

